



十速科技股份有限公司
tenx technology inc.

Total page

6

Doc No

UM-xxxxxxC

Rev.

1.1

文件名稱 TPG58M1 使用手冊

版次	生效日	ECN No.	制修訂者	修訂內容概要
1.0 1.1			黄海峰	新增。 全部修改。



十速科技股份有限公司
tenx technology inc.

TPG58M1 User Manual

Tenx technology inc
TEL: 886-2-29728029
FAX: 886-2-29728774
[http:// www.tenx.com.tw](http://www.tenx.com.tw)

tenx technology, inc.

Rev.1.1 2005/10/20

CONTENT

CHAPTER 1 TPG58M1 Accessories and function description.....2
CHAPTER 2 Operation description.....4
CHAPTER 3 Q & A.....5
CHAPTER 4 Notice6

CHAPTER 1 TPG58M1 Accessories and Function introduction

1、 Main board TPG58M1main board have two type

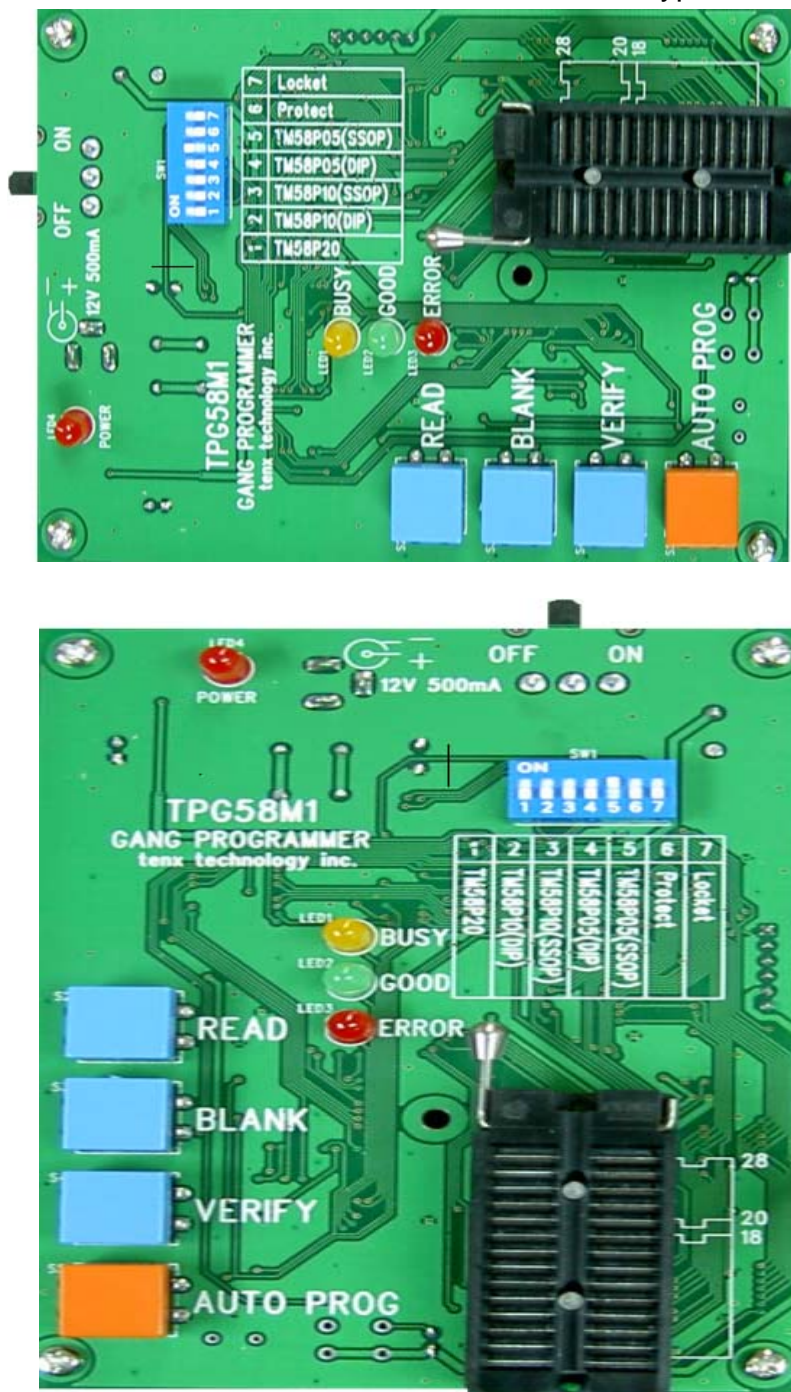


Fig1

IC type of Programming: TM58P10(SSOP)
 TM58P10 (DIP) (contain SOP)
 TM58P20

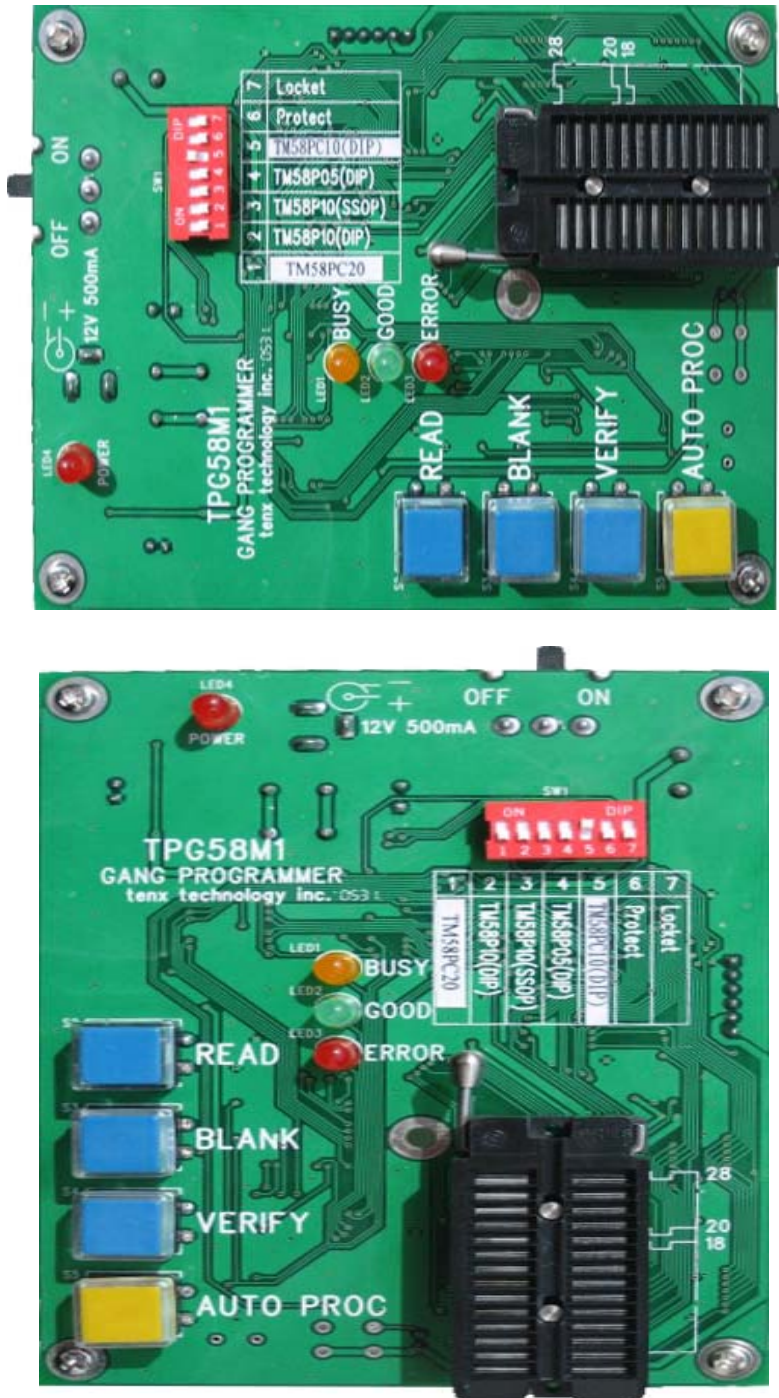


Fig 2

IC type of Programming : TM58PC10(DIP) (contain SOP)
 TM58P10(SSOP)
 TM58P10(DIP)
 TM58PC20

2、 Power Voltage : DC 12V/2A

CHAPTER 2 Operation description

TPG58M1 is one to one IC program tool. Switch set the IC number to program, and the IC put on socket will program to the IC number.

Other two switch can select :

SWITCH6: The switch is to set Protect status when IC programming is finished.

SWITCH7: The switch is to set Locket status, the READ can process only the switch is off.

Operation Procedure:

- 1、 Switch set to correct IC number.
- 2、 Put on origin IC
- 3、 Press READ key, orange LED will turn on, after READ OK green LED will turn on.
- 4、 Press VERIFY key again, to identify the data of MEMORY RAM and IC code data.
- 5、 When identify the data of Memory RAM is corrected, to prevent press READ key uncarefully, it must set Locket key to on position due to the read process will not be proceeding.
- 6、 Put on IC of not programmed (If IC need set to protect status after programming, before programming must let protect of switch set to on position, due to IC is OTP type, it can't set to protect status after programming).
- 7、 Press the blue BLANK key to identify the IC is not been programmed before (The step can be omit if the IC content is empty)
- 8、 Press AUTO PROG key to process the programming, On programming, orange LED will turn on, when programming is finished, green LED will turn on.
- 9、 If want to identify the data of memory RAM and IC code data, press VERIFY key to compare, if OK the green LED will turn on (The step only suit to unprotect status) .
- 10、 Take out the IC of programmed OK, at this moment green LED will turn off, Put on a new IC and repeat from step 6 to program IC.

Remark 1: Speaker sound have three kinds

Beep one time :READ OK、 BLANK OK、 VERIFY OK、 AUTO PROG OK;

Beep three times :READ ERROR、 BLANK ERROR、 VERIFY ERROR、 AUTO PROG ERROR;

Beep five times :IC number are different with SWITCH setting.

Remark 2 : LED color display

Orange color :Execute READ、BLANK、VERIFY、AUTO PROG;

Green color : READ、BLANK、VERIFY、AUTO PROG excution is completed OK;

Red color : READ、BLANK、VERIFY、AUTO PROG excution caused ERROR, SWITCH select and IC number is not matched .

Remark 3 : READ error condition have four kinds .

- 1、 IC put on wrong position or reversed .
- 2、 SWITCH select wrong IC number .
- 3、 IC is not program before .
- 4、 IC is set to PROTECT status。

CHAPTER 3 Q&A

- 1、 Poor contact of convert socket, or loose, circuit is shorted;
Solution: Change convert socket.
- 2、 Too much dust in programmer and cause circuit shorted, or overheated.
Solution: Change TPG58M1.
- 3、 TPG58M1 long time not use and cause IC programming error.
Solution: Change TPG58M1 .
- 4、 Take out IC can't be early it will cause the high percentage of programming fail.
Solution: Take out IC when green LED turn on.
- 5、 Voltage unstable .
Solution: stable the voltage .
- 6、 Connection error of power and cable easy cause IC programming error, and also the power will breakdown.
Solution : Use good socket and cable .
- 7、 At SAVE step, sometimes need modify End address, it is easy to forget
- 8、 TENX-SOP-16 and TENX-SOP-28 socket easy loose and cause poor contact.
Solution: Change socket.
- 9、 IC is not programmed before but it can't finish the program process.
Solution: Solve IC problem .
- 10、 Forget put on convert socket and programming , but the programming result is OK , and some IC number can't programming without convert socket .
Solution: PR10 must use convert socket, other IC type do not recommand to use without convert socket.

- 11、 IC put on wrong position will also cause IC programming error .
- 12、 IC itself have problem , such as , Config error ;
Solution: solve IC problem first .

CHAPTER 4 NOTICE

- 1、 When READ data of origin IC, origin IC must not be protected .
- 2、 Power had beffer use origin manufacture adaptor .
- 3、 When programming is proceeding , don't take IC out until green LED turn on , if take out early will cause program fail or program abnormal .