



十速

TM57M5526C/36C

DATA SHEET

Rev 0.92

tenx reserves the right to change or discontinue the manual and online documentation to this product herein to improve reliability, function or design without further notice. **tenx** does not assume any liability arising out of the application or use of any product or circuit described herein; neither does it convey any license under its patent rights nor the rights of others. **tenx** products are not designed, intended, or authorized for use in life support appliances, devices, or systems. If Buyer purchases or uses tenx products for any such unintended or unauthorized application, Buyer shall indemnify and hold tenx and its officers, employees, subsidiaries, affiliates and distributors harmless against all claims, cost, damages, and expenses, and reasonable attorney fees arising out of, directly or indirectly, any claim of personal injury or death associated with such unintended or unauthorized use even if such claim alleges that tenx was negligent regarding the design or manufacture of the part.

AMENDMENT HISTORY

Version	Date	Description
V0.90	May, 2017	New release.
V0.91	May, 2017	Error correction (P51. P64. P65. P67. P69)
V0.92	May, 2017	<ol style="list-style-type: none">1. Modify TM57M5526/36 into TM57M5526C/36C2. Add DIP/SOP8 package info (P7, P9, P89, P90, P91)3. Modify the error of LVR value (P24)

CONTENTS

AMENDMENT HISTORY	2
CONTENTS.....	3
FEATURES	5
BLOCK DIAGRAM	8
PIN ASSIGNMENT	9
PIN DESCRIPTION	10
PIN SUMMARY.....	11
FUNCTIONAL DESCRIPTION	12
1. CPU Core	12
1.1 Clock Scheme and Instruction Cycle	12
1.2 Addressing Mode	13
1.3 Programming Counter (PC) and Stack.....	15
1.4 ALU and Working (W) Register	16
1.5 STATUS Register (F-Plane 03H)	17
1.6 Interrupt.....	18
2. Chip Operation Mode	22
2.1 Reset.....	22
2.1.1 Power on Reset.....	22
2.1.2 Low Voltage Reset	22
2.1.3 External Pin Reset	23
2.1.4 Watchdog Timer Reset.....	23
2.2 System Configuration Register (SYSCFG)	24
2.3 MTP Program ROM.....	25
2.4 Page Locker Function.....	26
2.5 Power-Down Mode	27
2.6 Dual System Clock.....	28
2.7 Dual System Clock Modes Transition	29
3. Peripheral Functional Block	32
3.1 Watchdog (WDT) /Wakeup (WKT) Timer.....	32
3.2 Timer0: 8-bit Timer/Counter with Pre-scale (PSC)	35
3.3 Timer1: 8-bit Timer with Pre-scale (PSC)	41
3.4 PWM0: 8-bit PWM	44
3.5 Touch Key (TM57M5526C only)	47
3.6 System Clock Oscillator	55
4. I/O Port.....	56
4.1 PA0-4	56
4.2 PA7.....	61

MEMORY MAP..... 63

- F-Plane 63**
- R-Plane 68**

INSTRUCTION SET 70

ELECTRICAL CHARACTERISTICS 83

- 1. Absolute Maximum Ratings..... 83**
- 2. DC Characteristics 83**
- 3. Clock Timing 85**
- 4. Reset Timing Characteristics 85**
- 5. Characteristic Graphs..... 86**

ORDERING INFORMATION 89

- DIP-8 (300mil) Package Dimension 90**
- SOP-8 (150mil) Package Dimension 91**
- SOT23-6 Package Dimension 92**

FEATURES

1. **ROM: 2K x 14 bits MTP ROM with Page Locker function**
2. **RAM: 176 x 8 bits**
3. **STACK: 6 Levels**
4. **I/O port: One Bit-programmable I/O port (Max. 6 pins)**
5. **2 Independent Timers**
 - Timer0
 - 8-bit timer with divided by 1~256 pre-scale option/auto-reload/counter/interrupt/stop function
 - Timer1
 - 8-bit timer with divided by 1~256 pre-scale option/auto-reload/interrupt/stop function
6. **PWM: One 8-bit PWM0 with pre-scale/period-adjustment function**
7. **4-channel Touch Key (TM57M5526C only)**
 - 1~2 Key H/W auto scan, upper/lower boundary adjustable for each key
 - Interrupt/Wake-up CPU while key is pressed (H/W auto mode)
 - Interrupt while Touch Key is end of conversion (S/W manual mode)
 - ATK with 4 adjustable scan interval time
37.5 ms/75 ms/150 ms/300 ms @ $V_{DD}=3V$, 26 ms/52 ms/104 ms/208 ms @ $V_{DD}=5V$
 - Internal built-in reference capacitor
8. **System Oscillation Sources (Fsys)**
 - Fast-clock
 - FIRC (Fast Internal RC): 0.5/2/4 MHz (can be trimmed)
 - Slow-clock
 - SIRC (Slow Internal RC): 5/20/40/80 KHz @ $V_{DD}=5V$
9. **Dual System Clock**
 - FIRC + SIRC
10. **Power Saving Operation Mode**
 - FAST Mode: Slow-clock can be disabled or enabled, Fast-clock keeps CPU running
 - SLOW Mode: Fast-clock can be disabled or enabled, Slow-clock keeps CPU running
 - IDLE Mode: Fast-clock and CPU stop. Slow-clock or Wake-up Timer keep running
 - STOP Mode: All Clocks stop, Wake-up Timer stop

11. Reset

- Power On Reset
- Watchdog Reset
- Low Voltage Reset
- External pin Reset

12. 2-Level Low Voltage Reset: 1.7V/2.4V/3.7V (Can be disabled)

Freq \ LVR	1.7V	2.4V	3.7V	Disable
2 MHz	☑	☑	☑	☑
4 MHz	☒	☑	☑	☑

If LVR=Disable, VDD power-on must exceed the lowest LVR (~1.7V@25°C)

13. Operation Voltage: Low Voltage Reset Level to 5.5V

- F_{sys}=2 MHz, 1.5V ~ 5.5V, V_{DD} power-on must exceed the lowest LVR (~1.7V@25°C)
- F_{sys}=4 MHz, 1.8V ~ 5.5V

14. Operating Temperature Range:

- F_{sys}=2 MHz, -40°C to +85°C
- F_{sys}=4 MHz, -40°C to +75°C

15. Interrupt

- Two External Interrupt pins:
 - One pin is falling edge triggered
 - One pin is rising or falling edge triggered
- TM0, TM1, Wake-up Timer, Touch Key (TM57M5526C only) Interrupt

16. Wake-up Timer (WKT)

- Clocked by built-in RC oscillator with 4 adjustable interrupt times
37.5 ms/75 ms/150 ms/300 ms @V_{DD}=3V, 26 ms/52 ms/104 ms/208 ms @V_{DD}=5V

17. Watchdog Timer (WDT)

- Clocked by built-in RC oscillator with 4 adjustable reset times
- 75 ms/150 ms/300 ms/600 ms @V_{DD}=3V, 52 ms / 104 ms/208 ms/416 ms @V_{DD}=5V
- Watchdog timer can be disabled/enabled in Power-down mode

18. I/O Port

- CMOS Output
- Open-Drain Output
- Schmitt Trigger Input with/without pull-up resistor

19. PA0 and PA2 individual pin change wake up
20. PA3 and PA4 with High Sink and Drive ability

21. Page Locker Size: 512W/640W/768W .../1792W by 128 words step

22. Support 5-wire program

23. Instruction set: 39 Instructions

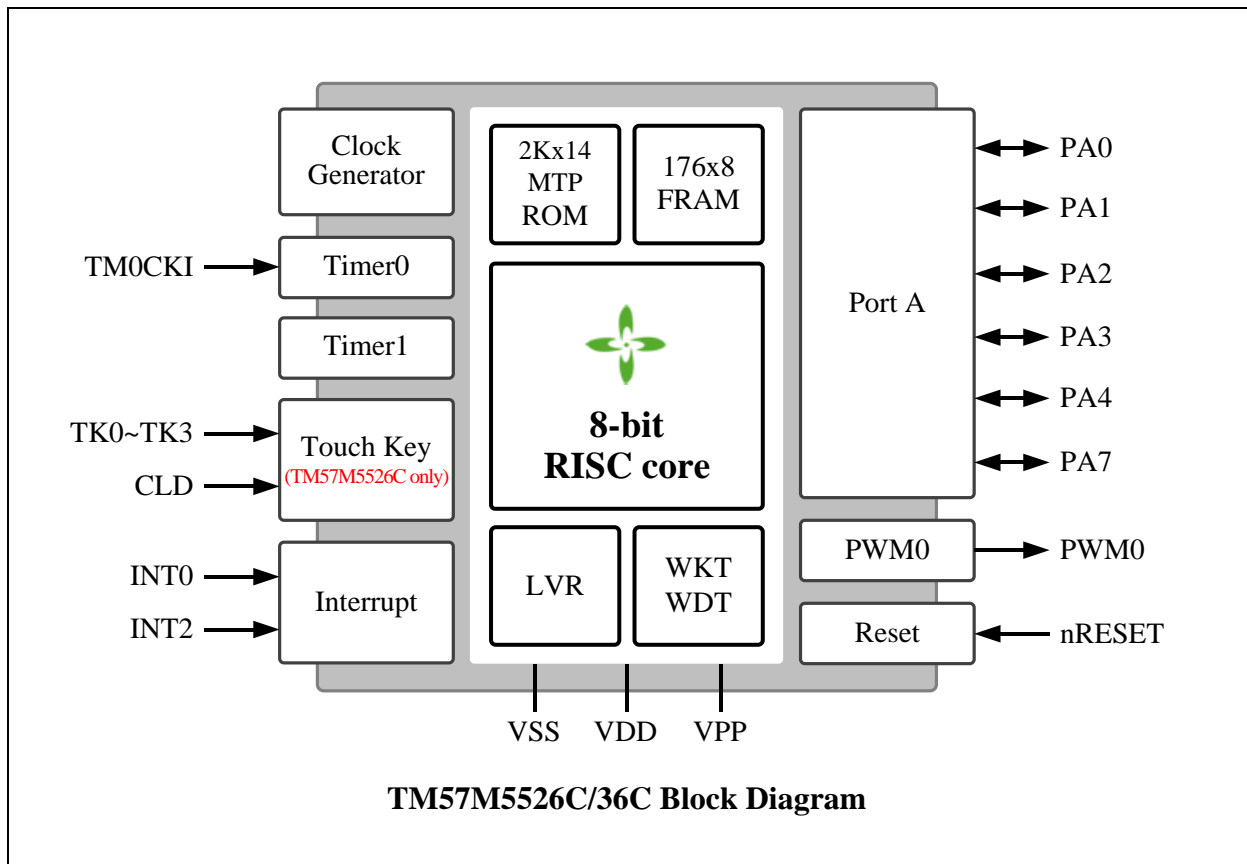
24. Package Types:

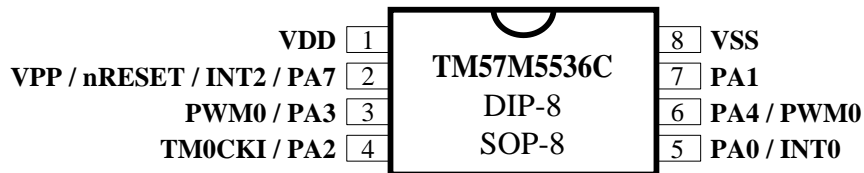
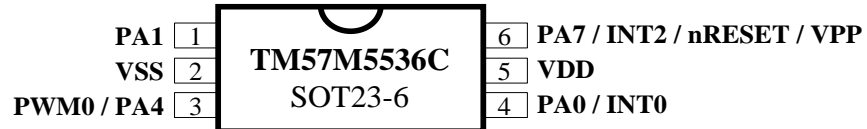
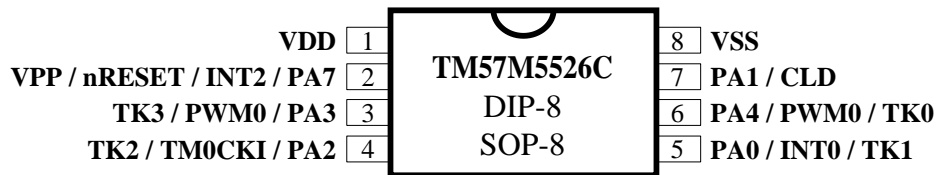
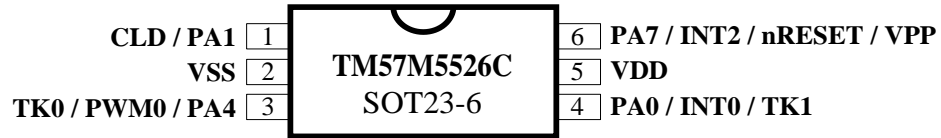
- 8-pin DIP (300 mil)
- 8-pin SOP (150 mil)
- SOT23-6

25. Supported EV Board on ICE

EV Board: EV8209

BLOCK DIAGRAM



PIN ASSIGNMENT


PIN DESCRIPTION

Name	In/Out	Pin Description
PA0-PA4	I/O	Bit-programmable I/O port for Schmitt-trigger input, CMOS push-pull output or open-drain output. Pull-up resistors are assignable by software.
PA7	I/O	Bit-programmable I/O port for Schmitt-trigger input or open-drain output. Pull-up resistors are assignable by software.
nRESET	I	External active low reset
VDD, VSS	P	Power Voltage input pin and ground
VPP	I	PROM programming high voltage input
INT0, INT2	I	External interrupt input
TM0CKI	I	Timer0's input in counter mode
NC	-	Not connected
PWM0	O	PWM0 output
TK0-TK3	I	Touch key input (TM57M5526C only)
CLD	I	Touch key capacitor input (TM57M5526C only)

PIN SUMMARY

Pin Number		Pin Name	Type	GPIO				Function After Reset	Alternate Function		
10-SOP/DIP	SOT23-6			Input		Output			PWM	Touch Key (TM57M5526C only)	MISC
				Weak Pull-up	Ext. Interrupt	O.D	P.P				
1	-	NC									
2	5	VDD	P								
3	6	PA7/INT2/nRESET/VPP	I/O	○	○	○		PA7		nRESET	
4	-	PA3/PWM0/ TK3	I/O	○		○	○	PA3	○	○	
5	-	PA2/TM0CKI/ TK2	I/O	○		○	○	PA2		○	
6	4	PA0/INT0/ TK1	I/O	○	○	○	○	PA0		○	
7	3	PA4/PWM0/ TK0	I/O	○		○	○	PA4	○	○	
8	1	PA1/ CLD	I/O	○		○	○	PA1		○	
9	2	VSS	P								
10	-	NC									

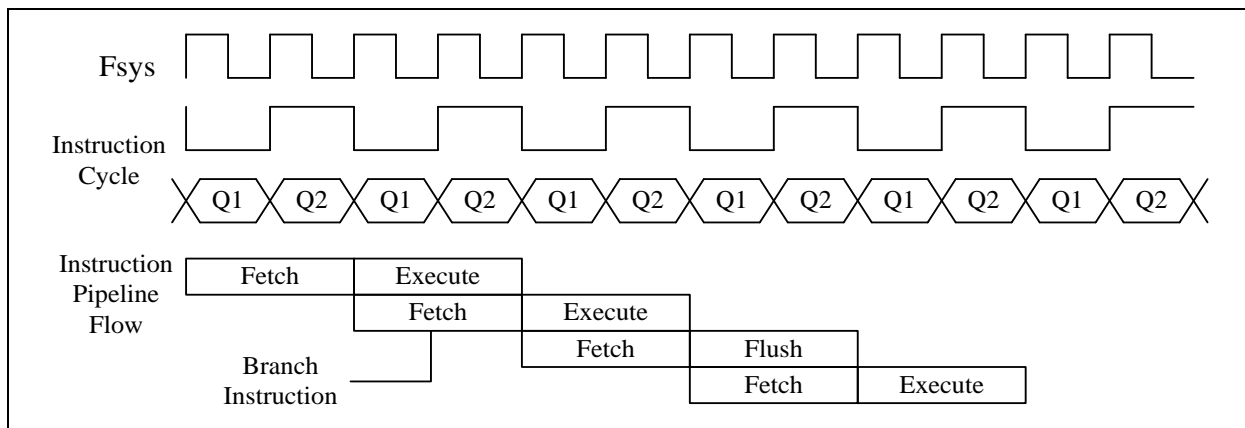
Symbol : P.P. = COM Push-Pull Output
 O.D. = Open Drain Output

FUNCTIONAL DESCRIPTION

1. CPU Core

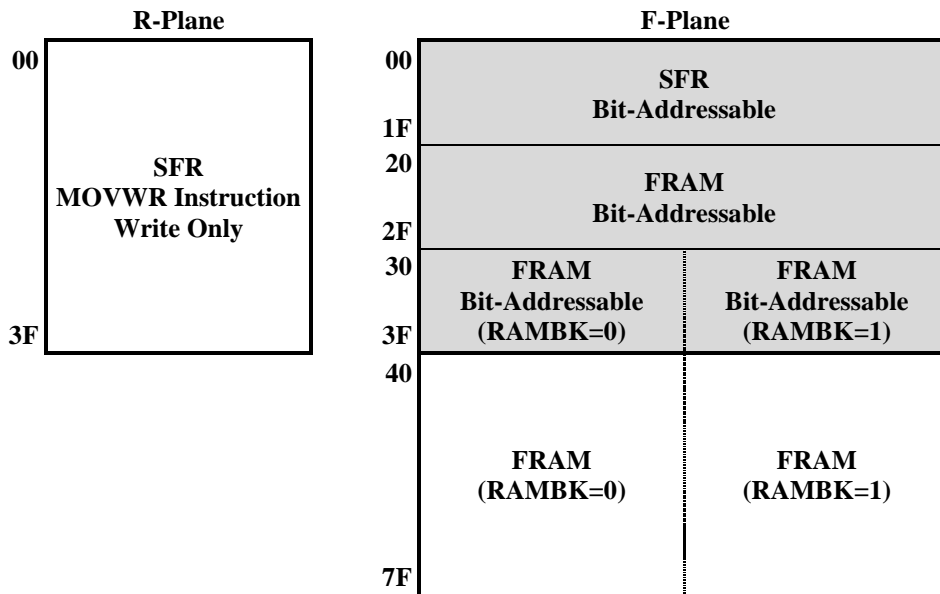
1.1 Clock Scheme and Instruction Cycle

The system clock is internally divided by two to generate Q1 state and Q2 state for each instruction cycle. The Programming Counter (PC) is updated at Q1 and the instruction is fetched from program ROM and latched into the instruction register in Q2. It is then decoded and executed during the following Q1-Q2 cycle. Branch instructions take two cycles since the fetch instruction is ‘flushed’ from the pipeline, while the new instruction is being fetched and then executed.



1.2 Addressing Mode

There are two Data Memory Planes in CPU, R-Plane and F-Plane. The registers in R-Plane are write-only. The “MOVWR” instruction copies the W-register’s content to R-Plane registers by direct addressing mode. The lower locations of F-Plane are reserved for the SFR. Above the SFR is General Purpose Data Memory, implemented as static RAM. F-Plane can be addressed directly or indirectly. Indirect Addressing is made by INDF register. The INDF register is not a physical register. Addressing INDF actually addresses the register whose address is contained in the FSR register (FSR is a pointer). The first half of F-Plane is bit-addressable, while the second half of F-Plane is not bit-addressable. And there are two RAM banks can be selected by RAMBK (F03.5).



◇ Example: Write immediate data into R-Plane register

```
MOVLW    AAH                ; Move immediate AAH into W register
MOVWR    05H                ; Move W value into R-Plane location 05H
```

◇ Example: Write immediate data into F-Plane register

```
MOVLW    55H                ; Move immediate 55H into W register
MOVWF    20H                ; Move W value into F-Plane location 20H
```

◇ Example: Move F-Plane location 20H data into W register

```
MOVFW    20H                ; To get a content of F-Plane location 20H to W
```

◇ Example: Clear FRAM Bank0 data by indirect addressing mode

```
MOVLW    20H                ; W=20H (FRAM start address)
MOVWF    FSR                ; Set start address of user FRAM into FSR register
BCF      STATUS, 5          ; Set RAMBK=0

LOOP:
MOVLW    00H                ; Clear user FRAM data
MOVWF    INDF               ; Clear user FRAM data
INCF     FSR, 1             ; Increment the FSR for next address
MOVLW    80H                ; W=80H (FRAM end address)
XORWF    FSR, 0            ; Check the FSR is end address of user FRAM?
BTFSS   STATUS, 2          ; Check the Z flag
GOTO     LOOP              ; If Z=0, goto LOOP label
...      ; If Z=1, exit LOOP
```

1.3 Programming Counter (PC) and Stack

The Programming Counter is 11-bit wide capable of addressing a 2K x 14 MTP ROM. As a program instruction is executed, the PC will contain the address of the next program instruction to be executed. The PC value is normally increased by one except the followings. The Reset Vector (000h) and the Interrupt Vector (001h) are provided for PC initialization and Interrupt. For CALL/GOTO instructions, PC loads 11 bits address from instruction word. For RET/RETI/RETLW instructions, PC retrieves its content from the top level STACK. For the other instructions updating PC[7:0], the PC[10:8] keeps unchanged. The STACK is 11-bit wide and 6-level in depth. The CALL instruction and hardware interrupt will push STACK level in order. While the RET/RETI/RETLW instruction pops the STACK level in order.

For table lookup, the device offer the powerful table read instructions TABRL, TABRH to return the 14-bit ROM data into W by setting the DPTR={DPH,DPL} F-Plane registers.

◇ Example: To look up the PROM data located “TABLE” & “TABLE2”

```

ORG      000H          ; Reset Vector
GOTO    START

START:
MOVLW   00H
MOVWF   INDEX          ; Set lookup table's address.

LOOP:
MOVWF   INDEX          ; Move index value to W register.
CALL    TABLE         ; To lookup data, W=55H.
...
INCF    INDEX, 1       ; Increment the index address for next address
...
GOTO    LOOP           ; Go to LOOP label.
...
MOVLW   (TABLE2>>8)&0xff
MOVWF   DPH            ; DPH register (F1E.1~0)
MOVLW   (TABLE2)&0xff
MOVWF   DPL            ; DPL register (F1D.7~0)
TABRL
TABRH
; W=86H
; W=19H
...

TABLE:
ADDWF   PCL, 1         ; Add the W with PCL, the result back in PCL.
RETLW   55H            ; W=55H when return
RETLW   56H            ; W=56H when return
RETLW   58H            ; W=58H when return

...

TABLE2:
ORG      368H
.DT     0x1986, 0x3719, 0x2983... ; 14-bit ROM data

```

1.4 ALU and Working (W) Register

The ALU is 8-bit wide and capable of addition, subtraction, shift and logical operations. In two-operand instructions, typically one operand is the W register, which is an 8-bit non-addressable register used for ALU operations. The other operand is either a file register or an immediate constant. In single operand instructions, the operand is either W register or a file register. Depending on the instruction executed, the ALU may affect the values of Carry (C), Digit Carry (DC), and Zero (Z) Flags in the STATUS register. The C and DC flags operate as a /Borrow and /Digit Borrow, respectively, in subtraction.

Note: /Borrow represents inverted of Borrow register.

/Digit Borrow represents inverted of Digit Borrow register.

1.5 STATUS Register (F-Plane 03H)

This register contains the arithmetic status of ALU and the reset status. The STATUS register can be the destination for any instruction, as with any other register. If the STATUS register is the destination for an instruction that affects the Z, DC or C bits, then the write to these three bits is disabled. These bits are set or cleared according to the device logic. It is recommended, therefore, that only BCF, BSF and MOVWF instructions are used to alter the STATUS register because these instructions do not affect those bits. The RAMBK bit is used to the FRAM Bank selection.

STATUS	Bit 7	Bit 6	Bit 5	Bit 4	Bit 3	Bit 2	Bit 1	Bit 0
Reset Value	0	0	0	0	0	0	0	0
R/W	R/W	R/W	R/W	R	R	R/W	R/W	R/W
Bit	Description							
7	GB1 : General Purpose Bit 1							
6	GB0 : General Purpose Bit 0							
5	RAMBK : FRAM Bank Selection 0: FRAM Bank0 1: FRAM Bank1							
4	TO : Time Out Flag 0: after Power On Reset, LVR Reset, or CLRWDT/SLEEP instruction 1: WDT time out occurs							
3	PD : STOP Flag 0: after Power On Reset, LVR Reset, or CLRWDT instruction 1: after SLEEP instruction							
2	Z : Zero Flag 0: the result of a logic operation is not zero 1: the result of a logic operation is zero							
1	DC : Decimal Carry Flag or Decimal /Borrow Flag							
	ADD instruction				SUB instruction			
	0: no carry 1: a carry from the low nibble bits of the result occurs				0: a borrow from the low nibble bits of the result occurs 1: no borrow			
0	C : Carry Flag or /Borrow Flag							
	ADD instruction				SUB instruction			
	0: no carry 1: a carry occurs from the MSB				0: a borrow occurs from the MSB 1: no borrow			

◇ Example: Write immediate data into STATUS register

```
MOVLW    00H
MOVWF    STATUS           ; Clear STATUS register
```

◇ Example: Bit addressing set and clear STATUS register

```
BSF      STATUS, 0       ; Set C=1
BCF      STATUS, 0       ; Clear C=0
```

◇ Example: Determine the C flag by BTFSS instruction

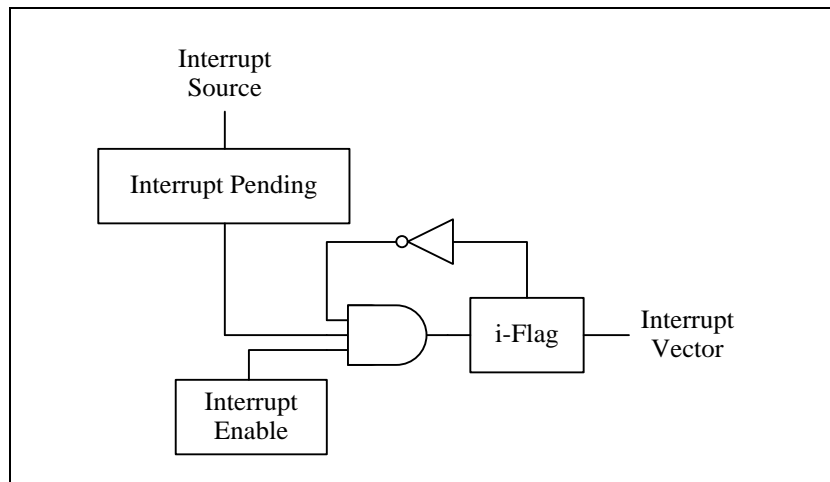
```
BTFSS    STATUS, 0       ; Check the C flag
GOTO     LABEL_1        ; If C=0, goto LABEL_1 label
GOTO     LABEL_2        ; If C=1, goto LABEL_2 label
```

1.6 Interrupt

The TM57M5536C has 1 level, 1 vector and 5 interrupt sources. TM57M5526C has 1 level, 1 vector and 6 interrupt sources. Each interrupt source has its own enable control bit. An interrupt event will set its individual pending flag; no matter its interrupt enable control bit is 0 or 1. Because TM57M5526C/36C has only 1 vector, there is not an interrupt priority register. The interrupt priority is determined by F/W.

If the corresponding interrupt enable bit has been set (INTIE), it would trigger CPU to service the interrupt. CPU accepts interrupt in the end of current executed instruction cycle. In the mean while, A “CALL 001” instruction is inserted to CPU, and i-flag is set to prevent recursive interrupt nesting.

The i-flag is cleared in the instruction after the “RETI” instruction. That is, at least one instruction in main program is executed before service the pending interrupt. The interrupt event is level triggered. F/W must clear the interrupt event register while serving the interrupt routine.



◇ Example: Setup INT0 (PA0) interrupt request with rising edge trigger

```

    ORG      000H          ; Reset Vector
    GOTO     START        ; Goto user program address

    ORG      001H          ; All interrupt vector
    GOTO     INT          ; If INT0 (PA0) input occurred rising edge

START:
    ORG      002H

    MOVLW   xxxxxx00B
    MOVWR   PAMODL        ; Select INT0 Pin Mode as Mode0
                                ; Open drain output low or input with Pull-up

    MOVLW   xxxxxx1B
    MOVWF   PAD           ; Release INT0, it becomes Schmitt-trigger
                                ; input with input pull-up resistor

    MOVLW   x1xxxxxxB
    MOVWR   MROB          ; Set INT0 interrupt trigger as rising edge
    MOVLW   1111110B
    MOVWF   INTIF         ; Clear INT0 interrupt request flag
    MOVLW   0000001B
    MOVWF   INTIE         ; Enable INT0 interrupt

MAIN:
    ...
    GOTO     MAIN

INT:
    MOVWF   20H            ; Store W data to FRAM 20H
    MOVFW   STATUS        ; Get STATUS data
    MOVWF   21H            ; Store STATUS data to FRAM 21H

    BTFSS   INT0IF        ; Check INT0IF bit
    GOTO    EXIT_INT      ; INT0IF=0, exit interrupt subroutine
    ...                  ; INT0 interrupt service routine
    MOVLW   1111110B
    MOVWF   INTIF         ; Clear INT0 interrupt request flag

EXIT_INT:
    MOVFW   21H            ; Get FRAM 21H data
    MOVWF   STATUS        ; Restore STATUS data
    MOVFW   20H            ; Restore W data
    RETI                   ; Return from interrupt

```

F08	Bit 7	Bit 6	Bit 5	Bit 4	Bit 3	Bit 2	Bit 1	Bit 0
INTIE	TKIE	–	TM1IE	TM0IE	WKTIE	INT2IE	–	INT0IE
R/W	R/W	–	R/W	R/W	R/W	R/W	–	R/W
Reset	0	–	0	0	0	0	–	0

F08.7 **TKIE:** Touch Key interrupt enable (TM57M5526C only)
 0: disable
 1: enable

F08.5 **TM1IE:** Timer1 interrupt enable
 0: disable
 1: enable

F08.4 **TM0IE:** Timer0 interrupt enable
 0: disable
 1: enable

F08.3 **WKTIE:** Wakeup Timer interrupt enable
 0: disable
 1: enable

F08.2 **INT2IE:** INT2 (PA7) interrupt enable
 0: disable
 1: enable

F08.0 **INT0IE:** INT0 (PA0) interrupt enable
 0: disable
 1: enable

F09	Bit 7	Bit 6	Bit 5	Bit 4	Bit 3	Bit 2	Bit 1	Bit 0
INTIF	TKIF	–	TM1IF	TM0IF	WKTIF	INT2IF	–	INT0IF
R/W	R/W	–	R/W	R/W	R/W	R/W	–	R/W
Reset	0	–	0	0	0	0	–	0

F09.7 **TKIF:** Touch Key interrupt event pending flag (TM57M5526C only)
 This bit is set by H/W while Key's TK Data Count is over the pre-set compare threshold range (H/W auto mode) or TK is end of conversion (S/W manual mode), write 0 to this bit will clear this flag

F09.5 **TM1IF:** Timer1 interrupt event pending flag
 This bit is set by H/W while Timer1 overflows, write 0 to this bit will clear this flag

F09.4 **TM0IF:** Timer0 interrupt event pending flag
 This bit is set by H/W while Timer0 overflows, write 0 to this bit will clear this flag

F09.3 **WKTIF:** Wakeup Timer interrupt event pending flag
 This bit is set by H/W while Wakeup Timer is timeout, write 0 to this bit will clear this flag

F09.2 **INT2IF:** INT2 (PA7) pin falling interrupt pending flag
 This bit is set by H/W at INT2 pin's falling edge, write 0 to this bit will clear this flag

F09.0 **INT0IF:** INT0 (PA0) pin falling/rising interrupt pending flag
 This bit is set by H/W at INT0 pin's falling/rising edge, write 0 to this bit will clear this flag

R0B	Bit 7	Bit 6	Bit 5	Bit 4	Bit 3	Bit 2	Bit 1	Bit 0
MROB	HWAUTO	INT0EDG	–	–	WDTPSC		WKTPSC	
R/W	W	W	–	–	W		W	
Reset	0	0	–	–	1	1	1	1

R0B.6 **INT0EDG:** INT0 (PA0) trigger edge select
 0: INT0 (PA0) pin falling edge to trigger interrupt event
 1: INT0 (PA0) pin rising edge to trigger interrupt event

2. Chip Operation Mode

2.1 Reset

The TM57M5526C/36C can be RESET in four ways.

- Power-On-Reset
- Low Voltage Reset (LVR)
- External Pin Reset (PA7)
- Watchdog Reset (WDT)

Resets can be caused by Power on Reset (POR), External Pin Reset (XRST), Low Voltage Reset (LVR), or Watchdog Timer Reset (WDTR). The CFGWH controls the Reset functionality. After Reset, the SFRs are returned to their default value, the program counter (PC) is cleared, and the system starts running from the reset vector 000H place. The TO and PD flags at status register (STATUS) are indicate system reset status.

2.1.1 Power on Reset

After Power-On-Reset, all system and peripheral control registers are then set to their default hardware Reset values. The clock source, LVR level and chip operation mode are selected by the SYSCFG register value.

2.1.2 Low Voltage Reset

The Low Voltage Reset features static reset when supply voltage is below a threshold level. There are three threshold levels can be selected. The LVR's operation mode is defined by the SYSCFG register. See the following LVR Selection Table; user must also consider the lowest operating voltage of operating frequency.

LVR Selection Table:

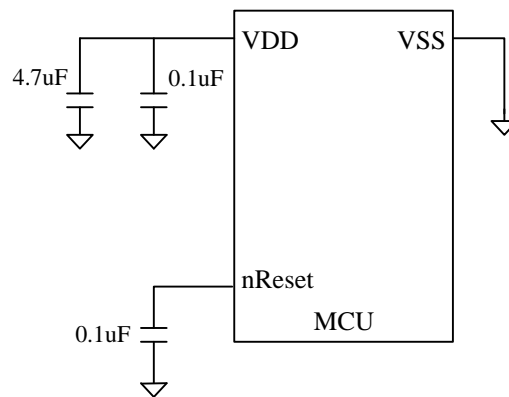
LVR Threshold Level	Operating voltage
LVR1.7	$5.5V > V_{DD} > 1.8V$
LVR2.4	$5.5V > V_{DD} > 2.5V$
LVR3.7	$5.5V > V_{DD} > 3.8V$ or $V_{DD} = 5.0V$

Different Fsys have different system minimum operating voltage, reference to Operating Voltage of DC characteristics, if current system voltage is low than minimum operating voltage and lower LVR is selected, then the system maybe enters dead-band and error occurs.

2.1.3 External Pin Reset

The External Pin Reset can be disabled or enabled by the SYSCFG register. It needs to keep at least 2 SIRC clock cycle long to be seen by the chip. XRST also set all the control registers to their default reset value. The TO/PD flag is not affected by these resets.

External reset pin is low level active. The system is running when reset pin is high level voltage input. The reset pin receives the low voltage and the system is reset. The external reset can reset the system during power on duration, and good external reset circuit can protect the system to avoid working at unusual power condition.



2.1.4 Watchdog Timer Reset

WDT overflow Reset can be disabled or enabled by the SYSCFG register. It runs in Fast/Slow mode and runs or stops in Idle/Stop mode. WDT overflow speed can be defined by WDTPSC SFR. WDT is cleared by device Reset or CLRWDT SFR bit WDT overflow Reset also set all the control registers to their default reset value. The TO/PD flags are not affected by these resets.

◇ Example: Defining Reset Vector

```

ORG      000H          ; Reset Vector
GOTO     START        ; Jump to user program address.

START:
ORG      010H          ; All interrupt vector
...      ; 010H, The head of user program
...
GOTO     START

```

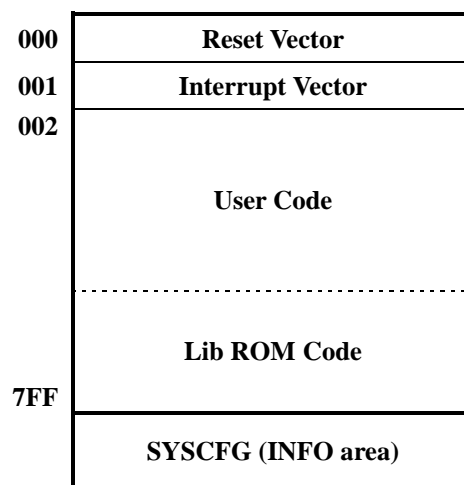
2.2 System Configuration Register (SYSCFG)

The System Configuration Register (SYSCFG) is located at MTP INFO area, and it contains two 14bits registers (CFGWL/CFGWH). The SYSCFG determines the option for initial condition of MCU. It is written by PROM Writer only. User can select clock source, LVR threshold voltage and chip operation mode by SYSCFG register. The 13th bit of CFGWH is code protection selection bit. If this bit is 1, the data in PROM will be protected, when user reads PROM.

Bit		13~0	
Default Value		CFGH: 00_000x_xxxx_xxxx CFGWL: 00_0000_xxxx_xxxx	
Bit		Description	
CFGWL	13	LPROT: Lib Code protection selection	
		1	Enable
		0	Disable
	12-9	LSIZE: Lib Size selection	
		1111	Invalid
		...	Invalid
		1100	Invalid
		1011	1792W
	 (128W/step)
		0001	512W
0000	No use page locker function		
8~0	Reserved		
CFGWH	13	PROTECT: Code protection selection	
		1	Enable
		0	Disable
	12	XRSTE: External pin Reset Enable	
		1	Enable
		0	Disable (PA7 as input I/O pin)
	11-10	LVR: Low Voltage Reset Mode	
		11	LVR=1.7V
		10	LVR Disable
		01	LVR=2.4V
		00	LVR=3.7V
	9-8	WDTE: WDT Reset Enable	
		11	Always Enable
		10	Enable in FAST/SLOW mode ,Disable in IDLE/STOP mode
		0X	Disable
7-0	Reserved		

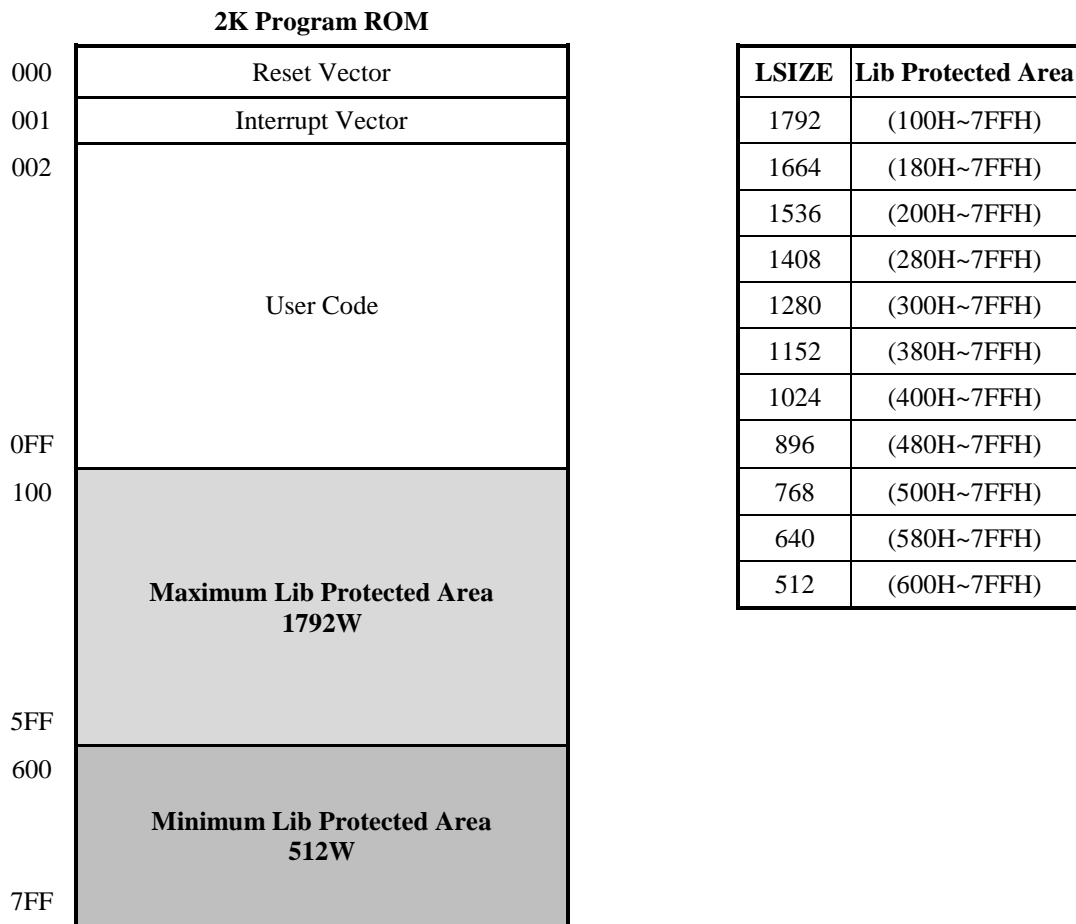
2.3 MTP Program ROM

The MTP Program ROM of this device is 2K words, with an extra INFO area to store the SYSCFG. The ROM can be written multi-times and can be read as long as the PROTECT and LPROT bits of SYSCFG are not set. The SYSCFG can be read no matter PROTECT or LPROT is set, but PROTECT bit can be cleared only when the User ROM Code area is erased, and LPROT bit can be cleared only when the Lib ROM Code area is erased. That is, unprotect the PROTECT or LPROT bit needs to erase the corresponding ROM area. If LPROT bit is set, The ROM can still be written multi-times in the User ROM Code area to update user ROM code again by writer, but the Lib ROM Code area will not be read or written again by writer until the LPROT bit is cleared. On the other hand, if PORTECT bit is set, the user ROM code area will not be read by writer, and the user ROM code can't be updated until the PORTECT bit is cleared.



2.4 Page Locker Function

TM57M5526C/36C support Page Locker function. By setting LPROT (CFGWL.13), user can choose whether to turn it on. If the user A (library code provider) turns this function on, the user A (library code provider) can select different size (512~1792W) of lib protected area by LSIZE (CFGWL.12~9). In lib protected area, the user B (firmware developer) can't read ROM code by TABRL/TABRH instruction or in any other way. By using the TICE99IDE tool, the user A can provide a protected lib code for the user B to use, but the user B does not know its details, and the user B still can continue to complete the main code in the unprotected area.



2.5 Power-Down Mode

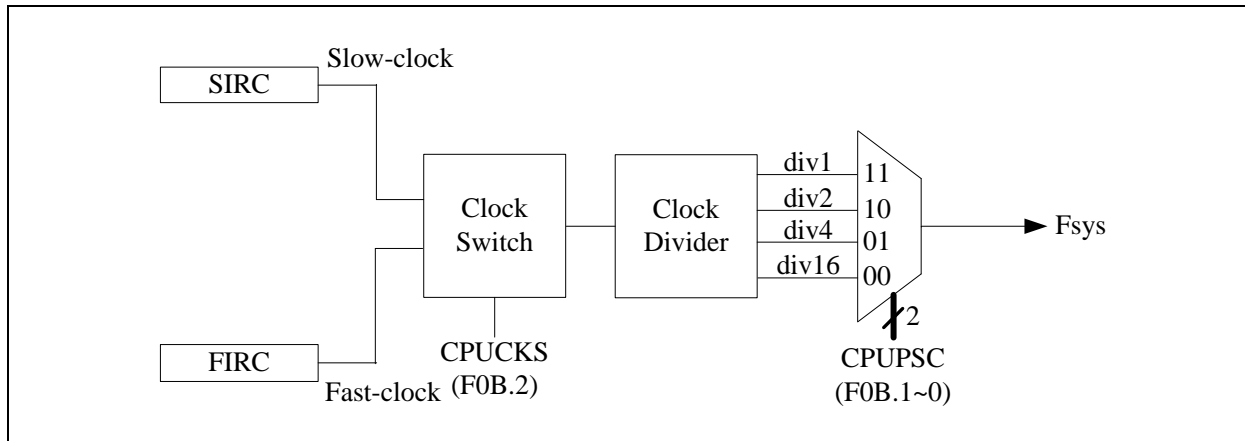
The Power-down mode includes IDLE Mode and STOP Mode. It is activated by SLEEP instruction. During the Power-down mode, the system clock and peripherals stop to minimize power consumption, whether the WDT/WKT Timer are working or not depend on F/W setting. The Power-down mode can be terminated by Reset, or enabled Interrupts (External pins, WKT and ATK interrupts) or PA0, PA2 pin change wake up.

R03	Bit 7	Bit 6	Bit 5	Bit 4	Bit 3	Bit 2	Bit 1	Bit 0
PWRDN	PWRDN							
R/W	W							
Reset	–	–	–	–	–	–	–	–

R03.7~0 **PWRDN**: Write this register to enter Power-down (STOP/IDLE) Mode

2.6 Dual System Clock

TM57M5526C/36C is designed with dual-clock system. There are two kinds of clock source, SIRC (Slow Internal RC) Clock and FIRC (Fast Internal RC) Clock. Both of them can be applied to CPU kernel as system clock source. Refer to the figure as below.



FAST Mode:

TM57M5526C/36C enters FAST mode by setting the CPUCKS (F0B.2). In this mode, the system clock source is FIRC. The Timer0, Timer1 and PWM0 blocks are driven by Fast-clock.

SLOW Mode:

After power on or reset, TM57M5526C/36C enters SLOW mode, the default system clock source is SIRC. In this mode, the Fast-clock can be stopped by setting FASTSTP=1 (F0B.3) for power saving or run by setting FASTSTP=0, and Slow-clock is enabled. All peripheral blocks (Timer0, Timer1 and PWM0, etc...) are driven by Slow-clock.

IDLE Mode:

When SLOWSTP (F0B.4) is cleared, the TM57M5526C/36C will enter the "IDLE Mode" after executing the SLEEP instruction. In this mode, the Slow-clock will keep running to provide clock to WKT/WDT or Auto Touch Key block. CPU stops fetching code and all blocks are stop.

Another way to keep clock oscillation in IDLE mode is setting WKTIE=1 (F08.3) to keeping WKT running before executing the SLEEP instruction or WDTE=11B (CFGWH.9~8) to keeping WDT running. In such condition, the Slow-clock will also keep running no matter SLOWSTP is set or cleared. It is possible to keep WKT working for wake-up CPU periodically in the IDLE mode, which is useful for low power Touch Key detection.

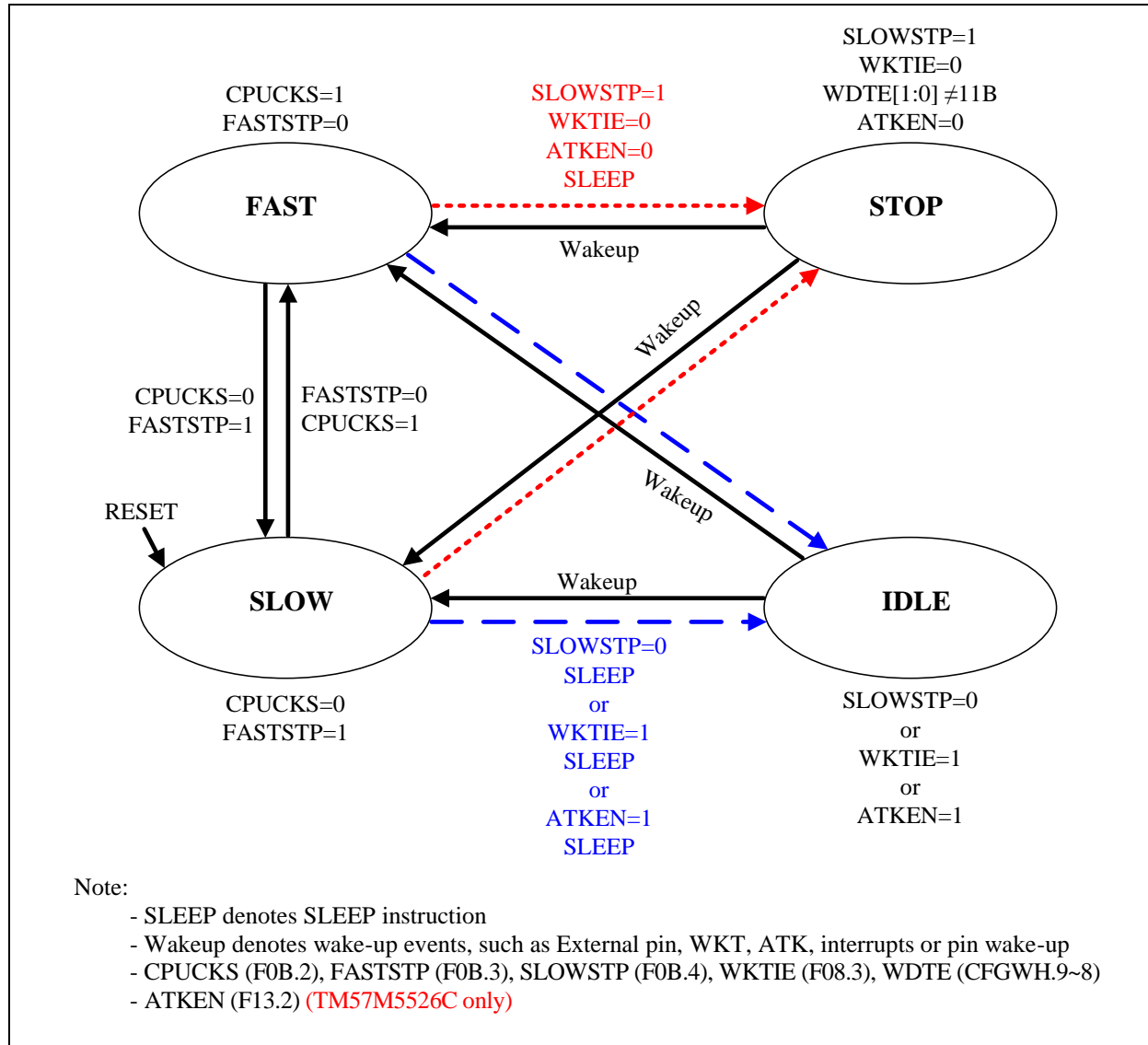
The third way to keep clock oscillation in IDLE mode is setting ATKEN=1 (F13.2) before executing the SLEEP instruction. In such condition, The Auto Touch Key will keep working. **(TM57M5526C only)**

STOP Mode:

If Slow-clock, WKT, WDT and ATK are disabled before executing the SLEEP instruction, every block is turned off and the TM57M5526C/36C enters the STOP mode. STOP mode is similar to IDLE mode. The difference is all clock oscillators either Fast-clock or Slow-clock are stopped and no clocks are generated.

2.7 Dual System Clock Modes Transition

TM57M5526C/36C is operated in one of four modes: FAST Mode, SLOW Mode, IDLE Mode, and STOP Mode.

Modes Transition Diagram:

CPU Mode & Clock Functions Table:

Mode	Oscillator	Fsys	Fast-clock	Slow-clock	TM0/TM1/TK/PWM0	ATK	Wakeup event
FAST	FIRC	Fast-clock	Run	Run	Run	Run	–
SLOW	SIRC	Slow-clock	Set by FASTSTP bit	Run	Run	Run	–
IDLE	SIRC	Stop	Stop	Run	Stop	Run	WKT/ATK/IO
STOP	Stop	Stop	Stop	Stop	Stop	Stop	IO

FAST Mode transits to SLOW Mode:

The source clock of Slow-clock is SIRC. The following steps are suggested to be executed by order when FAST mode transits to SLOW mode:

- (1) Switch system clock source to Slow-clock (CPUCKS=0)
- (2) Stop Fast-clock (FASTSTP=1)

◇ Example: Switch operating mode from FAST mode to SLOW mode

BCF	CPUCKS	; Switch system clock source to Slow-clock
BSF	FASTSTP	; Stop Fast-clock

SLOW Mode transits to FAST Mode:

The source clock of Fast-clock is FIRC. The following steps are suggested to be executed by order when SLOW mode transits to FAST mode:

- (1) Enable Fast-clock (FASTSTP=0)
- (2) Switch system clock source to Fast-clock (CPUCKS=1)

◇ Example: Switch operating mode from SLOW mode to FAST mode

BCF	FASTSTP	; Enable Fast-clock
BSF	CPUCKS	; Switch system clock source to Fast-clock

IDLE Mode Setting:

The IDLE mode can be configured by following setting in order:

- (1) Enable Slow-clock (SLOWSTP=0) or WKT (WKTIE=1)
- (2) Execute SLEEP instruction

IDLE mode can be woken up by interrupts (External pins, WKT or ATK) or pins (PA0 and PA2) change wake up.

◇ Example: Switch operating mode to IDLE mode

BCF	SLOWSTP	; Enable Slow-clock
SLEEP		; Enter IDLE mode

STOP Mode Setting:

The STOP mode can be configured by following setting in order:

- (1) Stop Slow-clock (SLOWSTP=1)
- (2) Disable WKT/WDT (WKTIE=0)
- (3) Disable ATK (ATKEN=0)
- (4) Execute SLEEP instruction

STOP mode can be woken up by External pins interrupt or pins (PA0 and PA2) change wake up.

◇ Example: Switch operating mode to STOP mode

BSF SLOWSTP ; Stop Slow-clock
 BCF WKTIE ; Disable WDT/WKT
 BCF ATKEN ; Disable ATK
 SLEEP ; Enter STOP mode

F08	Bit 7	Bit 6	Bit 5	Bit 4	Bit 3	Bit 2	Bit 1	Bit 0
INTIE	TKIE	–	TM1IE	TM0IE	WKTIE	INT2IE	–	INT0IE
R/W	R/W	–	R/W	R/W	R/W	R/W	–	R/W
Reset	0	–	0	0	0	0	–	0

F08.3 **WKTIE**: Wakeup Timer interrupt enable
 0: disable
 1: enable

F0B	Bit 7	Bit 6	Bit 5	Bit 4	Bit 3	Bit 2	Bit 1	Bit 0
CLKCTL	–	–	–	SLOWSTP	FASTSTP	CPUCKS	CPUPSC	
R/W	–	–	–	R/W	R/W	R/W	R/W	
Reset	–	–	–	0	0	0	1	1

F0B.4 **SLOWSTP**: Slow-clock stop
 0: Slow-clock is running
 1: Slow-clock stops running in Power-down mode

F0B.3 **FASTSTP**: Fast-clock stop
 0: Fast-clock is running
 1: Fast-clock stops running

F0B.2 **CPUCKS**: System clock source select
 0: Slow-clock
 1: Fast-clock (forbid using, when CPUPSC=3)

F13	Bit 7	Bit 6	Bit 5	Bit 4	Bit 3	Bit 2	Bit 1	Bit 0
ATKCTL	–	–	ATKSIT		–	ATKEN	–	ATKNUM
R/W	–	–	R/W		–	R/W	–	R/W
Reset	–	–	0	0	–	0	–	0

F13.2 **ATKEN**: Touch key auto scan mode enable (TM57M5526C only)
 0: disable H/W Auto Mode
 1: enable H/W Auto Mode

R03	Bit 7	Bit 6	Bit 5	Bit 4	Bit 3	Bit 2	Bit 1	Bit 0
PWRDN	PWRDN							
R/W	W							
Reset	–	–	–	–	–	–	–	–

R03.7~0 **PWRDN**: Write this register to enter Power Down Mode

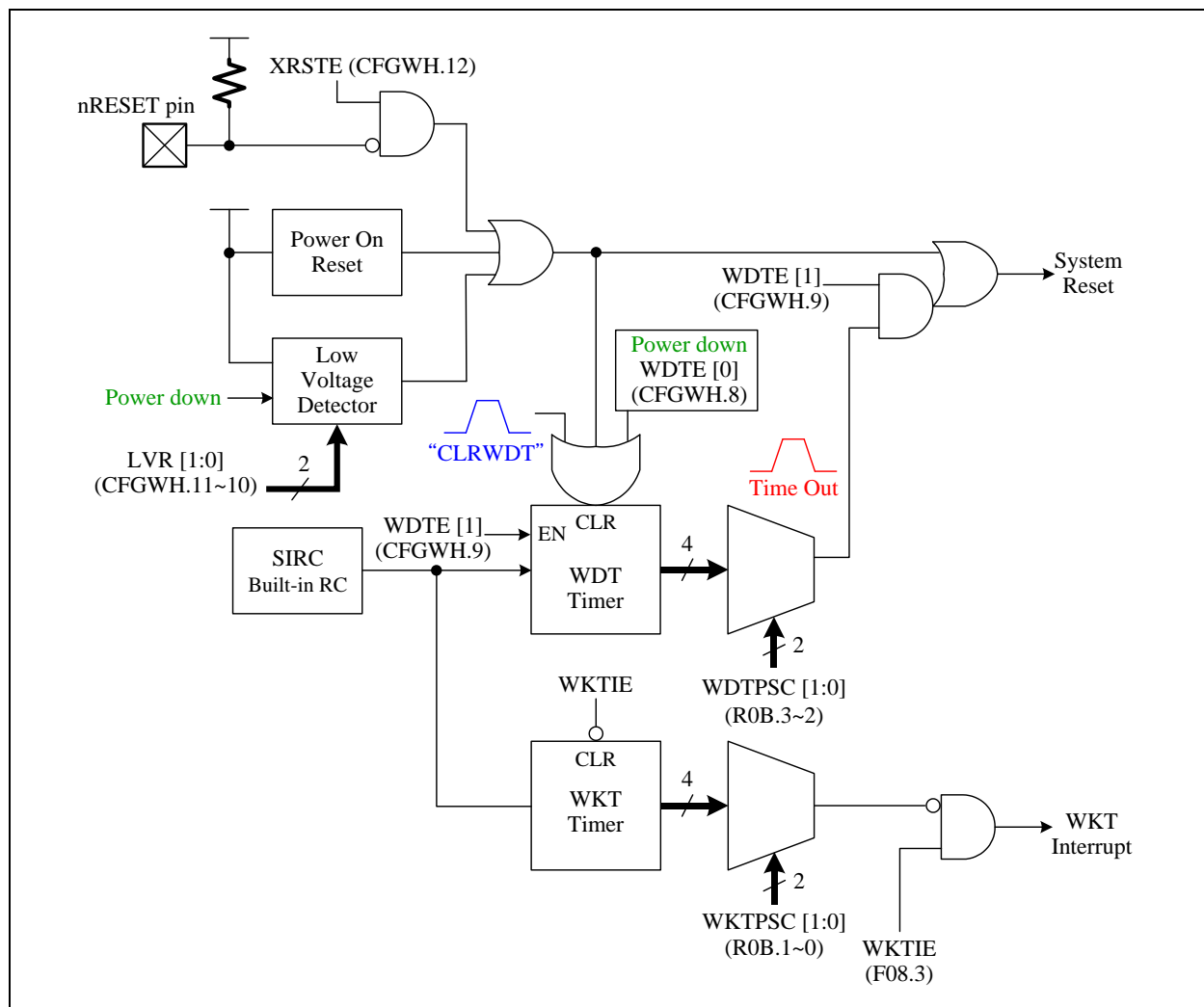
3. Peripheral Functional Block

3.1 Watchdog (WDT) /Wakeup (WKT) Timer

The WDT and WKT share the same built-in internal RC Oscillator and have individual own counters. The overflow period of WDT, WKT can be selected by individual prescaler (WDTPSC[1:0], WKTTPSC[1:0]). The WDT timer is cleared by the CLRWDT instruction. If the Watchdog is enabled (CFGWH[9], WDTE[1]=1), the WDT generates the chip reset signal. In IDLE mode, the WDT is only enabled when WDTE[1:0]=11B. Otherwise it will be disabled and stopped for power saving.

The WKT timer is an interval timer. When WKT overflow time out, it will generate overflow time out flag “WKTIF” (F09.3). The WKT timer is cleared/stopped by WKTIE=0. Set WKTIE=1, the WKT timer will generate WKT overflow time out interrupt and always count regardless at any CPU operating mode.

Watchdog clear is controlled by CLRWDT instruction and moving any value into WDTCLR (R04) is to clear watchdog timer.



WDT/WKT Block Diagram

If the user program needs the MCU totally shut down for power conservation in STOP mode, the below setting of control bits should be followed.

Mode		WDTE		WKTIE	Watchdog RC Oscillator
Normal Mode		0	x	0	Stop
		1	x	0	Run
		x	x	1	
Power Down Mode	IDLE Mode	0	x	0	Stop
		1	0		Run
		1	1	0	
		x	x	1	
	STOP Mode	0	x	0	Stop

◇ Example: Clear watchdog timer by CLRWDT instruction

MAIN:

```

...                               ; Execute program
CLRWDT   WKTIE                   ; Execute CLRWDT instruction
...
GOTO     MAIN

```

◇ Example: Clear watchdog timer by WDTCLR register

MAIN:

```

...                               ; Execute program
MOVWF    WDTCLR                   ; Write any value into WDTCLR register
...
GOTO     MAIN

```

◇ Example: Set WKT period and interrupt function

MAIN:

```

MOVLW    xxxxxx10B              ; WKTPSC=2, WKT period=64 ms @5V
MOVWF    MR0B

MOVLW    11110111B             ; Clear WKT interrupt flag by using byte operation
                                           ; Don't use bit operation "BCF WKTIF" to clear flag
MOVWF    INTIF                   ; F-Plane 09H

MOVLW    00001000B             ; Enable WKT interrupt function
MOVWF    INTIE

```

F03	Bit 7	Bit 6	Bit 5	Bit 4	Bit 3	Bit 2	Bit 1	Bit 0
STATUS	GB1	GB0	RAMBK	TO	PD	Z	DC	C
R/W	R/W	R/W	R/W	R	R	R/W	R/W	R/W
Reset	0	0	0	0	0	0	0	0

F03.4 **TO:** WDT time out flag, read-only
 0: after Power On Reset, LVR Reset, or CLRWDT/SLEEP instructions
 1: WDT time out occurs

F08	Bit 7	Bit 6	Bit 5	Bit 4	Bit 3	Bit 2	Bit 1	Bit 0
INTIE	TKIE	–	TM1IE	TM0IE	WKTIE	INT2IE	–	INT0IE
R/W	R/W	–	R/W	R/W	R/W	R/W	–	R/W
Reset	0	–	0	0	0	0	–	0

F08.3 **WKTIE:** Wakeup Timer interrupt enable
 0: disable
 1: enable

F09	Bit 7	Bit 6	Bit 5	Bit 4	Bit 3	Bit 2	Bit 1	Bit 0
INTIF	TKIF	–	TM1IF	TM0IF	WKTIF	INT2IF	–	INT0IF
R/W	R/W	–	R/W	R/W	R/W	R/W	–	R/W
Reset	0	–	0	0	0	0	–	0

F09.3 **WKTIF:** Wakeup Timer interrupt event pending flag
 This bit is set by H/W while Wakeup Timer is timeout, write 0 to this bit will clear this flag

R04	Bit 7	Bit 6	Bit 5	Bit 4	Bit 3	Bit 2	Bit 1	Bit 0
WDTCLR	WDTCLR							
R/W	W							
Reset	–	–	–	–	–	–	–	–

R04.7~0 **WDTCLR:** Write this register to clear WDT/WKT

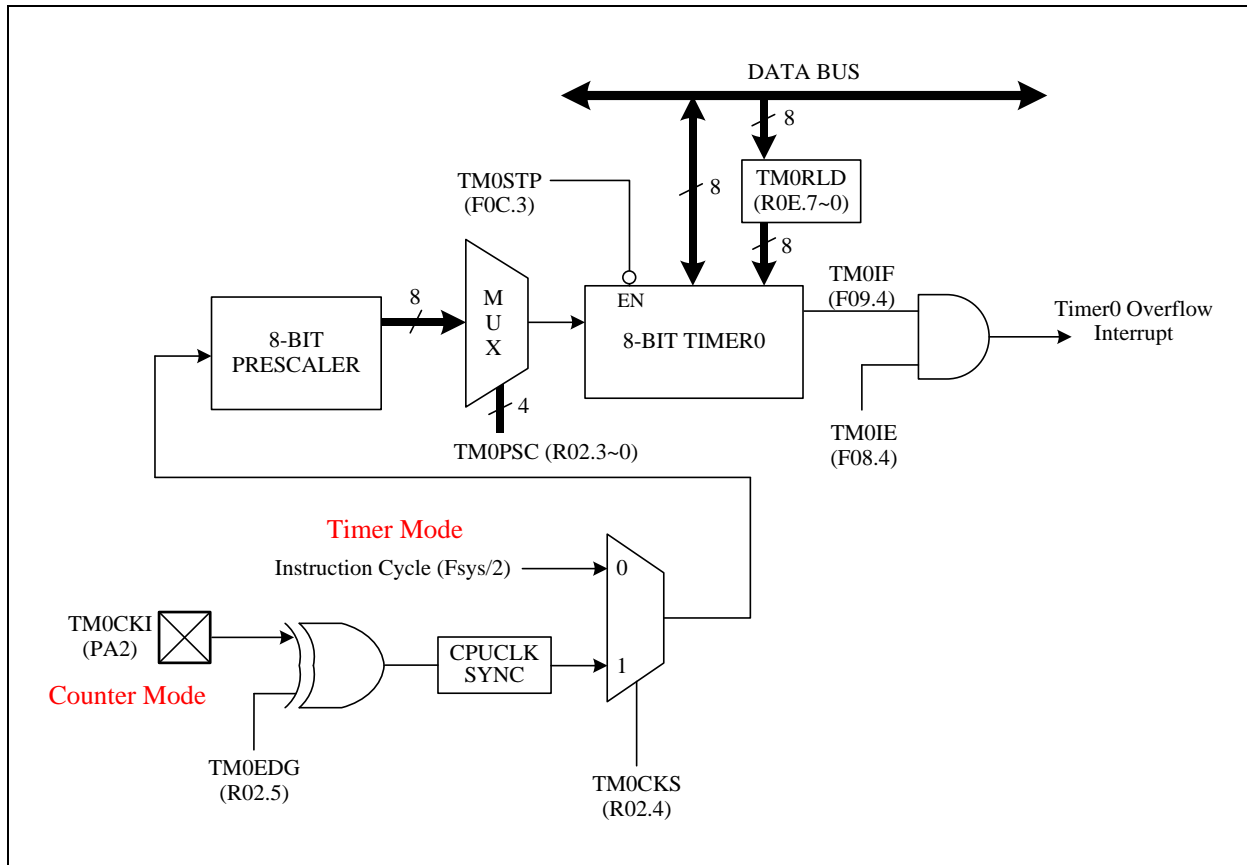
R0B	Bit 7	Bit 6	Bit 5	Bit 4	Bit 3	Bit 2	Bit 1	Bit 0
MROB	HWAUTO	INT0EDG	–	–	WDTPSC		WKT PSC	
R/W	W	W	–	–	W		W	
Reset	0	0	–	–	1	1	1	1

R0B.3~2 **WDTPSC:** WDT pre-scale option select
 00: WDT period is 52 ms, @5V; 75 ms, @3V
 01: WDT period is 104 ms, @5V; 150 ms, @3V
 10: WDT period is 208 ms, @5V; 300 ms, @3V
 11: WDT period is 416 ms, @5V; 600 ms, @3V

R0B.1~0 **WKT PSC:** WKT pre-scale option select
 00: WKT period is 26 ms, @5V; 37.5 ms, @3V
 01: WKT period is 52ms, @5V; 75 ms, @3V
 10: WKT period is 104 ms, @5V; 150 ms, @3V
 11: WKT period is 208 ms, @5V; 300 ms, @3V

3.2 Timer0: 8-bit Timer/Counter with Pre-scale (PSC)

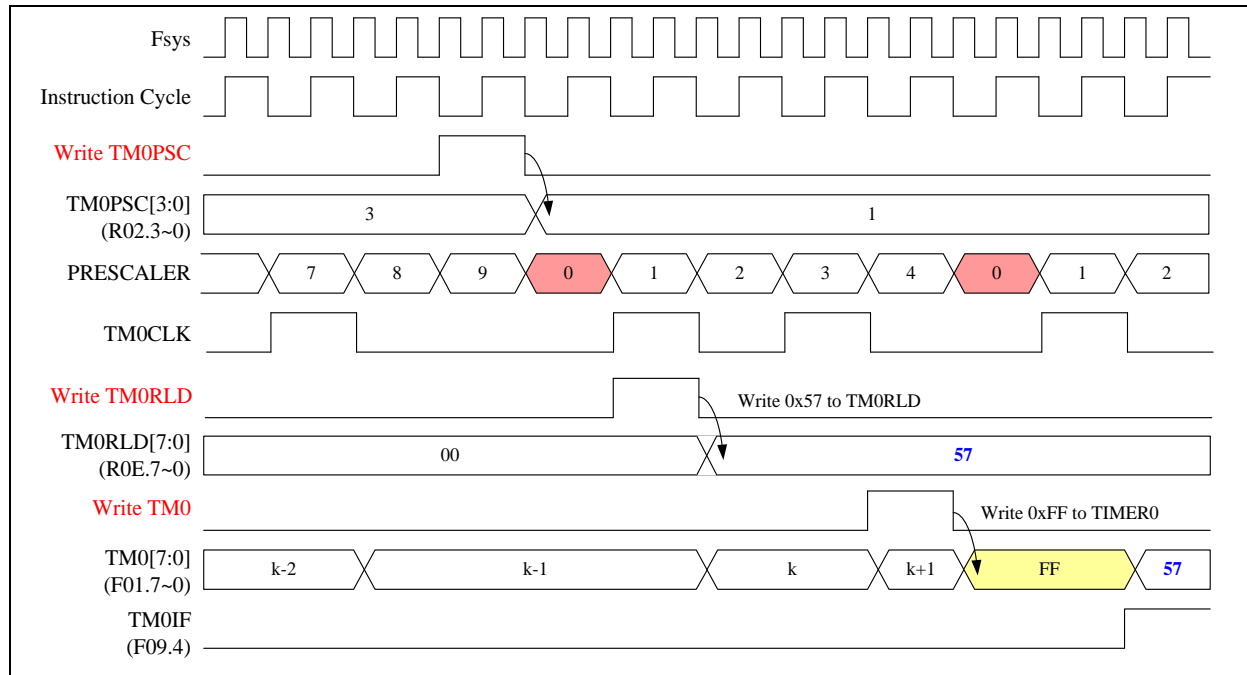
The Timer0 is an 8-bit wide register of F-Plane. It can be read or written as any other register of F-Plane. Besides, Timer0 increases itself periodically and automatically rolls over based on the pre-scaled clock source, which can be the instruction cycle or TM0CKI (PA2) rising/falling input. The Timer0's increasing rate is determined by the TM0PSC (R02.3~0). The Timer0 can generate interrupt flag TM0IF (F09.4) and also reload the new data from TM0RLD (R0E.7~0) when it rolls over. It generates Timer0 interrupt if the TM0IE (F08.4) bit is set. Timer0 can be stopped counting if the TM0STP (F0C.3) bit is set.



Timer0 Block Diagram

Timer Mode:

When the Timer0 prescaler (TM0PSC) is written, the internal 8-bit prescaler will be cleared to 0 to make the counting period correct at the first Timer0 count. TM0CLK is the internal signal that causes the Timer0 to increase by 1 at the end of TM0CLK. TM0WR is also the internal signal that indicates the Timer0 is directly written by instruction; meanwhile, the internal 8-bit prescaler will be cleared. When Timer0 counts from FFh to TM0RLD data, TM0IF (Timer0 Interrupt Flag) will be set to 1 and generate interrupt if TM0IE (Timer0 Interrupt Enable) is set. The following timing diagram describes the Timer0 works in pure Timer mode.



Timer0 works in Timer mode (TM0CKS=0)

The equation of Timer0 interrupt timer value is as following:

$$\text{Timer0 interrupt frequency} = \text{Instruction cycle time} / \text{TM0PSC} / (256 - \text{TM0RLD})$$

◇ Example: Setup Timer0 work in Timer mode, $F_{\text{sys}} = \text{Fast-clock} / \text{CPUPSC} = \text{FIRC } 8 \text{ MHz} / 2 = 4 \text{ MHz}$

; Setup Timer0 clock source and divider

```

MOVLW    00000010B
MOVWF    CLKCTL           ; CPUPSC=10b, divided by 2
BSF      CPUCKS          ; Set Fast-clock as system clock
MOVLW    00x0 0100B    ; TM0CKS=0, Timer0 clock is instruction cycle
MOVWR    TM0CTL          ; TM0PSC=0100b, divided by 16
    
```

; Setup Timer0 reload data

```

MOVLW    80H
MOVWR    TM0RLD          ; Set Timer0 reload data=128
    
```



; Setup Timer0

```
BSF      TM0STP      ; Timer0 stops counting
CLRFB    TM0         ; Clear Timer0 content
```

; Enable Timer0 and interrupt function

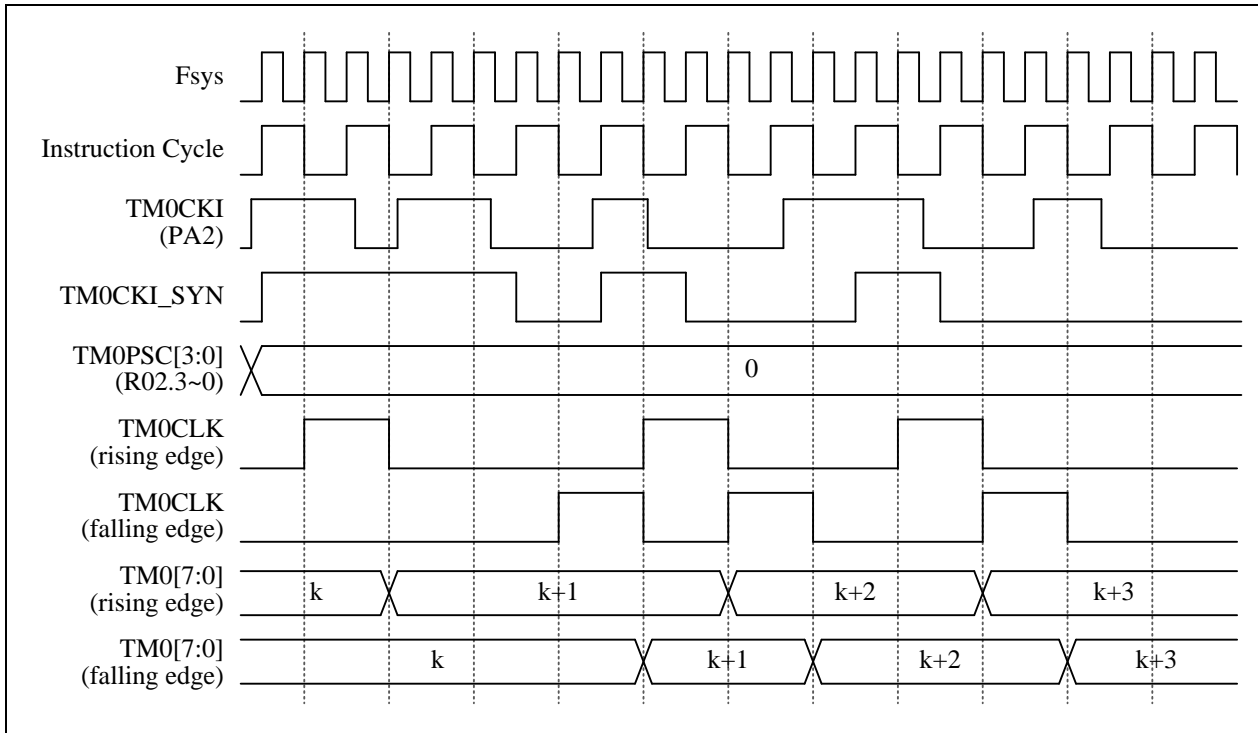
```
MOVLW    11101111B
MOVWF    INTIF      ; Clear Timer0 request interrupt flag
BSF      TM0IE      ; Enable Timer0 interrupt function
BCF      TM0STP     ; Enable Timer0 counting
```

Timer0 clock source is $F_{sys}/2=4\text{ MHz}/2=2\text{ MHz}$, Timer0 divided by 16

Timer0 interrupt frequency= $2\text{ MHz}/16/(256-128)=976.56\text{ Hz}$

Counter Mode:

If TM0CKS is set, then Timer0 counter source clock is from TM0CKI (PA2) pin. TM0CKI signal is synchronized by instruction cycle that means the high/low time durations of TM0CKI must be longer than one instruction cycle time to guarantee each TM0CKI's change will be detected correctly by the synchronizer. The following timing diagram describes the Timer0 works in Counter mode.



Timer0 works in Counter mode (TM0CKS=1) for TM0CKI

◇ Example: Setup Timer0 works in Counter mode

; Setup Timer0 clock source and divider

```
MOVLW 00110000B
MOVWR TM0CTL
```

```
; TM0EDG=1, counting edge is falling edge
; TM0CKS=1, Timer0 clock is TM0CKI (PA2)
; TM0PSC=0000b, divided by 1
```

; Setup Timer0

```
BSF TM0STP
CLRFR TM0
```

```
; Timer0 stops counting
; Clear Timer0 content
```

; Enable Timer0 and read Timer0 counter

```
BCF TM0STP
...
BSF TM0STP
MOVFR TM0
```

```
; Enable Timer0 counting
; Timer0 stops counting
; Read Timer0 content
```

F01	Bit 7	Bit 6	Bit 5	Bit 4	Bit 3	Bit 2	Bit 1	Bit 0
TM0	TM0							
R/W	R/W							
Reset	0	0	0	0	0	0	0	0

F01.7~0 **TM0**: Timer0 content

F08	Bit 7	Bit 6	Bit 5	Bit 4	Bit 3	Bit 2	Bit 1	Bit 0
INTIE	TKIE	–	TM1IE	TM0IE	WKTIE	INT2IE	–	INT0IE
R/W	R/W	–	R/W	R/W	R/W	R/W	–	R/W
Reset	0	–	0	0	0	0	–	0

F08.4 **TM0IE**: Timer0 interrupt enable
 0: disable
 1: enable

F09	Bit 7	Bit 6	Bit 5	Bit 4	Bit 3	Bit 2	Bit 1	Bit 0
INTIF	TKIF	–	TM1IF	TM0IF	WKTIF	INT2IF	–	INT0IF
R/W	R/W	–	R/W	R/W	R/W	R/W	–	R/W
Reset	0	–	0	0	0	0	–	0

F09.4 **TM0IF**: Timer0 interrupt event pending flag
 This bit is set by H/W while Timer0 overflows, write 0 to this bit will clear this flag

F0C	Bit 7	Bit 6	Bit 5	Bit 4	Bit 3	Bit 2	Bit 1	Bit 0
MFOC	CLKFLT	VCCFLT	–	TM1STP	TM0STP	PWM0CLR	PWM0PSC	
R/W	R/W	R/W	–	R/W	R/W	R/W	R/W	
Reset	0	0	–	0	0	0	0	0

F0C.3 **TM0STP**: Timer0 counter stop
 0: Timer0 is counting
 1: Timer0 stops counting

R02	Bit 7	Bit 6	Bit 5	Bit 4	Bit 3	Bit 2	Bit 1	Bit 0
TM0CTL	–	–	TM0EDG	TM0CKS	TM0PSC			
R/W	–	–	W	W	W			
Reset	–	–	0	0	0	0	0	0

R02.5 **TM0EDG**: TM0CKI (PA2) edge selection for Timer0 Prescaler count
 0: TM0CKI (PA2) rising edge for Timer0 Prescaler count
 1: TM0CKI (PA2) falling edge for Timer0 Prescaler count

R02.4 **TM0CKS**: Timer0 Prescaler clock select
 0: Instruction Cycle as Timer0 Prescaler clock
 1: TM0CKI (PA2) as Timer0 Prescaler clock



R02.3~0 **TM0PSC:** Timer0 prescaler. Timer0 clock source

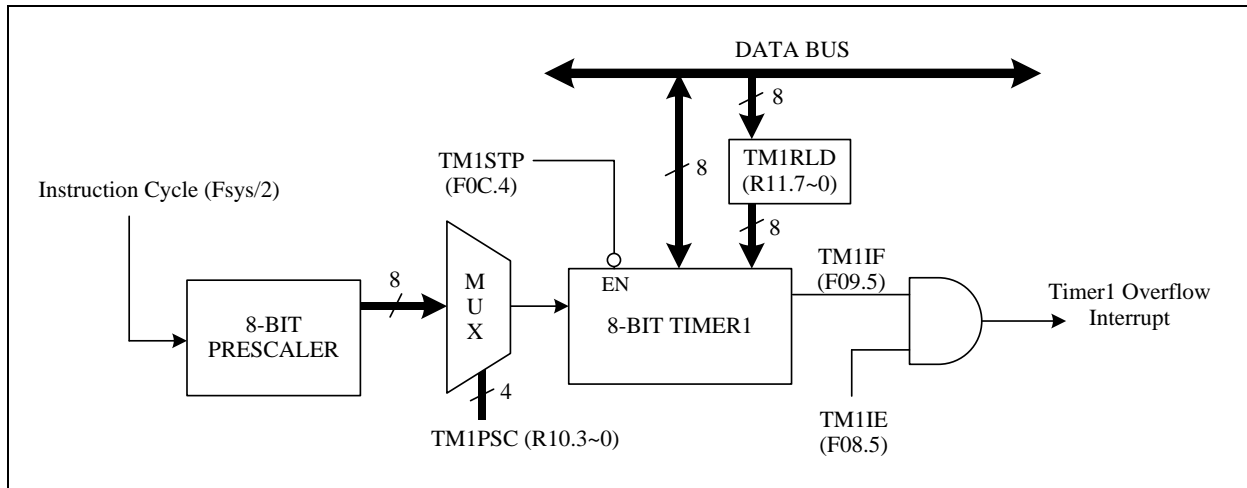
- 0000: divided by 1
- 0001: divided by 2
- 0010: divided by 4
- 0011: divided by 8
- 0100: divided by 16
- 0101: divided by 32
- 0110: divided by 64
- 0111: divided by 128
- 1xxx: divided by 256

R0E	Bit 7	Bit 6	Bit 5	Bit 4	Bit 3	Bit 2	Bit 1	Bit 0
TM0RLD	TM0RLD							
R/W	W							
Reset	0	0	0	0	0	0	0	0

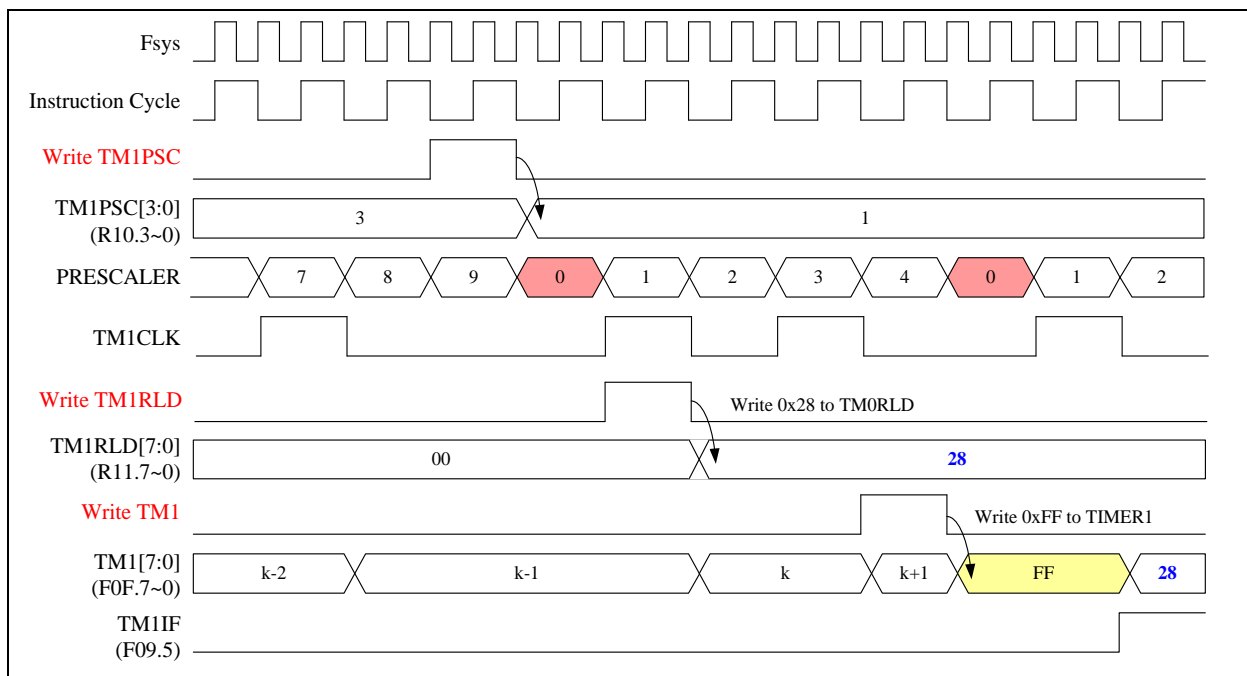
R0E.7~0 **TM0RLD:** Timer0 reload data

3.3 Timer1: 8-bit Timer with Pre-scale (PSC)

The Timer1 is an 8-bit wide register of F-Plane. It can be read or written as any other register of F-Plane. It is almost the same as Timer0, except Timer1 doesn't have Counter Mode. Timer1 increases itself periodically and automatically rolls over based on the pre-scaled instruction cycle. The Timer1's increasing rate is determined by the TM1PSC (R10.3~0). The Timer1 can generate interrupt flag TM1IF (F09.5) and also reload the new data from TM1RLD (R11.7~0) when it rolls over. It generates Timer1 interrupt if the TM1IE (F08.5) bit is set. Timer1 can be stopped counting if the TM1STP (F0C.4) bit is set.



Timer1 Block Diagram



Timer1 works in Timer mode

When the Timer1 prescaler (TM1PSC) is written, the internal 8-bit prescaler will be cleared to 0 to make the counting period correct at the first Timer1 count. TM1CLK is the internal signal that causes the Timer1 to increase by 1 at the end of TM1CLK. TM1WR is also the internal signal that indicates the Timer1 is directly written by instruction; meanwhile, the internal 8-bit prescaler will be cleared. When Timer1 counts from FFh to TM1RLD data, TM1IF (Timer1 Interrupt Flag) will be set to 1 and generate interrupt if TM1IE (Timer1 Interrupt Enable) is set. The timing diagram describes the Timer1 works in pure Timer mode is shown in above.

The equation of Timer1 interrupt frequency is as following:

$$\text{Timer1 interrupt frequency} = \text{Instruction cycle frequency} / \text{TM1PSC} / (256 - \text{TM1RLD})$$

◇ Example: CPU is running in SLOW mode, $F_{\text{sys}} = \text{Slow-clock} / \text{CPUPSC} = \text{SIRC } 80 \text{ KHz} / 2 = 40 \text{ KHz}$

; Setup Timer1 clock source and divider

```

MOV LW    00000010B           ; Set Slow-clock as system clock
MOV WF   CLKCTL              ; CPUPSC=10b, divided by 2
MOV LW    00000111B
MOV WR   TM1CTL              ; TM1PSC=0111b, divided by 128
    
```

; Setup Timer1 reload data

```

MOV LW    64H
MOV WR   TM1RLD              ; Set Timer1 reload data=100
    
```

; Setup Timer1

```

BSF      TM1STP              ; Timer1 stops counting
CLRF    TM1                  ; Clear Timer1 content
    
```

; Enable Timer1 and interrupt function

```

MOV LW    11011111B
MOV WF   INTIF              ; Clear Timer1 request interrupt flag
BSF      TM1IE              ; Enable Timer1 interrupt function
BCF      TM1STP             ; Enable Timer1 counting
    
```

Timer1 clock source is $F_{\text{sys}} / 2 = 40 \text{ KHz} / 2 = 20 \text{ KHz}$, Timer1 divided by 128

Timer1 interrupt frequency = $20 \text{ KHz} / 128 / (256 - 100) = 1.002 \text{ Hz}$

F08	Bit 7	Bit 6	Bit 5	Bit 4	Bit 3	Bit 2	Bit 1	Bit 0
INTIE	TKIE	–	TM1IE	TM0IE	WKTIE	INT2IE	–	INTOIE
R/W	R/W	–	R/W	R/W	R/W	R/W	–	R/W
Reset	0	–	0	0	0	0	–	0

F08.5 **TM1IE:** Timer1 interrupt enable
 0: disable
 1: enable

F09	Bit 7	Bit 6	Bit 5	Bit 4	Bit 3	Bit 2	Bit 1	Bit 0
INTIF	TKIF	–	TM1IF	TM0IF	WKTIF	INT2IF	–	INT0IF
R/W	R/W	–	R/W	R/W	R/W	R/W	–	R/W
Reset	0	–	0	0	0	0	–	0

F09.5 **TM1IF**: Timer1 interrupt event pending flag
 This bit is set by H/W while Timer1 overflows, write 0 to this bit will clear this flag

F0C	Bit 7	Bit 6	Bit 5	Bit 4	Bit 3	Bit 2	Bit 1	Bit 0
MFOC	CLKFLT	VCCFLT	–	TM1STP	TM0STP	PWM0CLR	PWM0PSC	
R/W	R/W	R/W	–	R/W	R/W	R/W	R/W	
Reset	0	0	–	0	0	0	0	0

F0C.4 **TM1STP**: Timer1 counter stop
 0: Timer1 is counting
 1: Timer1 stops counting

F0F	Bit 7	Bit 6	Bit 5	Bit 4	Bit 3	Bit 2	Bit 1	Bit 0
TM1	TM1							
R/W	R/W							
Reset	0	0	0	0	0	0	0	0

F0F.7~0 **TM1**: Timer1 content

R10	Bit 7	Bit 6	Bit 5	Bit 4	Bit 3	Bit 2	Bit 1	Bit 0
TM1CTL	–	–	–	–	TM1PSC			
R/W	–	–	–	–	W			
Reset	–	–	–	–	0	0	0	0

R10.3~0 **TM1PSC**: Timer1 prescaler. Timer1 clock source
 0000: divided by 1 (Fsys/2)
 0001: divided by 2 (Fsys/4)
 0010: divided by 4 (Fsys/8)
 0011: divided by 8 (Fsys/16)
 0100: divided by 16 (Fsys/32)
 0101: divided by 32 (Fsys/64)
 0110: divided by 64 (Fsys/128)
 0111: divided by 128 (Fsys/256)
 1xxx: divided by 256 (Fsys/512)

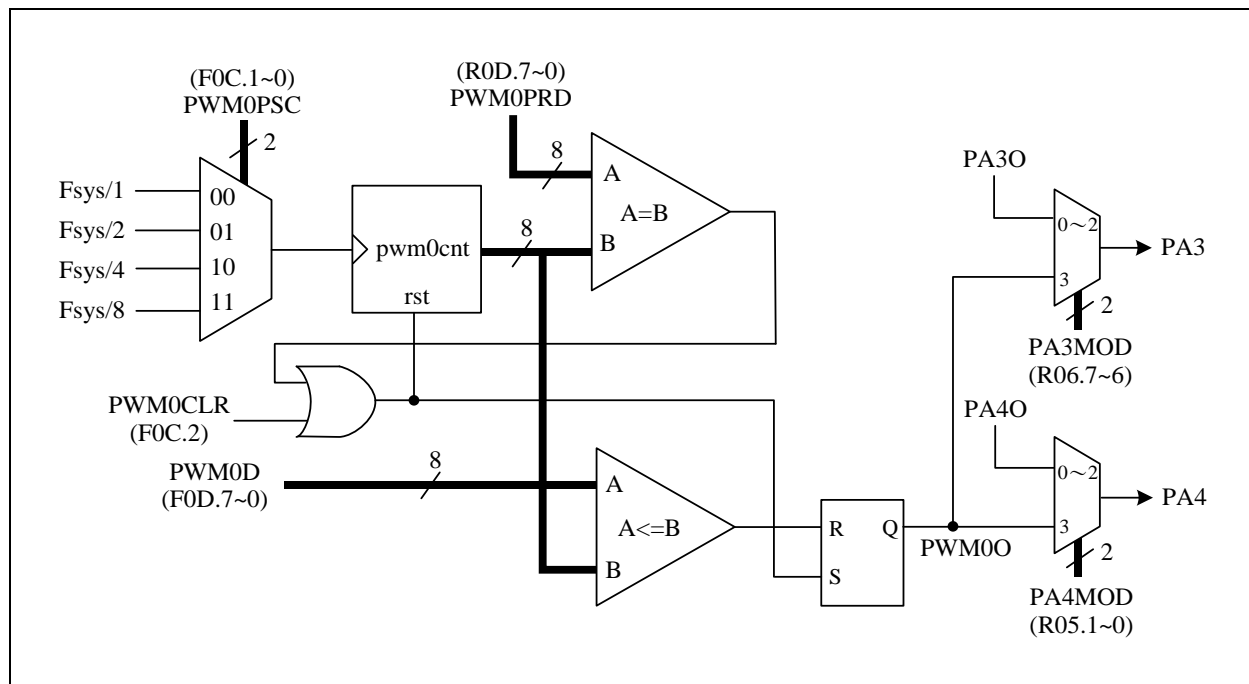
R11	Bit 7	Bit 6	Bit 5	Bit 4	Bit 3	Bit 2	Bit 1	Bit 0
TM1RLD	TM1RLD							
R/W	W							
Reset	0	0	0	0	0	0	0	0

R11.7~0 **TM1RLD**: Timer1 reload data

3.4 PWM0: 8-bit PWM

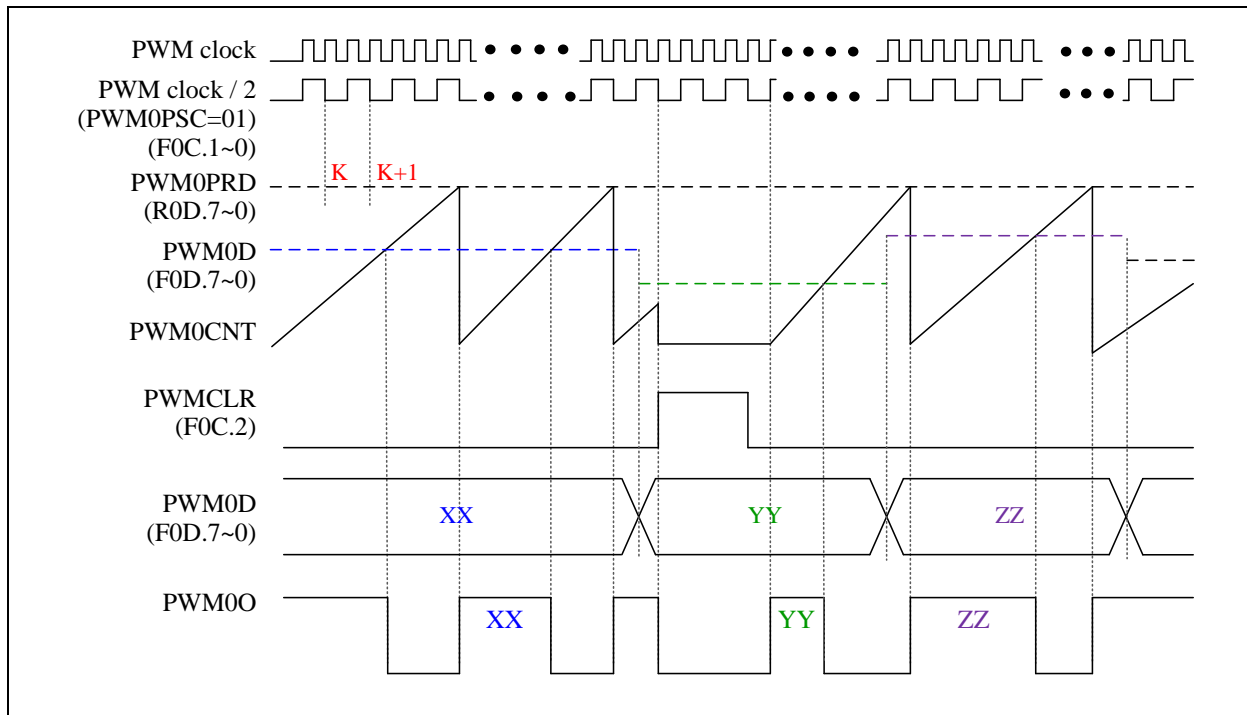
The chip has a built-in 8-bit PWM generator. The source clock comes from F_{sys} divided by 1, 2, 4, and 8 according to PWM0PSC (F0C.1~0). The PWM0 duty cycle can be changed with writing to PWM0D (F0D.7~0).

The PWM0 can output to PA3 or PA4 by Pin Mode setting. If PA3's Pin Mode "PA3MOD" (R06.7~6) is set as Mode3, the PWM0 will output to PA3. If PA4's Pin Mode "PA4MOD" (R05.1~0) is set as Mode3, the PWM0 will output to PA4. Setting the PWM0CLR (F0C.2) bit will clear the PWM0 counter and disable PWM0 output. Figure shows the block diagram of PWM0.



PWM0 Block Diagram

The next figure shows the PWM0 waveforms. When PWM0CLR bit is set or PWM0D equals to zero, the PWM0 output is cleared to '0' no matter what its current status is. Once the PWM0CLR bit is cleared and PWM0D is not zero, the PWM0 output is set to '1' to begin a new PWM cycle. PWM0 output will be '0' when PWM0CNT is greater than or equals to PWM0D. PWM0CNT keeps counting up when equals to PWM0PRD (R0D.7~0), the PWM0 output is set to '1' again.



PWM0 Block Diagram

◇ Example: CPU is running in FAST mode, $F_{sys} = \text{Fast-clock}/\text{CPUPSC} = \text{FIRC } 8 \text{ MHz}/2 = 4 \text{ MHz}$

; CLK_setting

```

MOV LW    00000 110B      ; CPUCKS=1, select Fast-clock as system clock
MOV W F   CLKCTL             ; CPUPSC=10B, System clock source divided by 2
    
```

; PINMODE_setting

```

MOV LW    xxxxxx11B      ; PA4MOD=11B
MOV W R   PAMODH            ; set PA4's Pin Mode as Mode3 (PWM0 output)
MOV LW    11xxxxxxB      ; PA3MOD=11B
MOV W R   PAMODL            ; set PA3's Pin Mode as Mode3 (PWM0 output)
    
```

; Setup PWM0 period and duty

```

BSF       PWM0CLR           ; PWM0CLR=1, PWM0 clear and hold
MOV LW    FFH
MOV W R   PWM0PRD          ; Set PWM0 period=FFH+1=256
MOV LW    80H
MOV W F   PWM0D            ; Set PWM0 duty=80H=128
    
```

; Setup PWM0 prescaler and output enable

```

MOV LW    xxxxxx001B      ; PWM0CLR=0, PWM0 start working
MOV W F   MFOC             ; PWM0PSC=01B, divided by 2
    
```

$$\text{PWM0 output duty} = \text{PWM0D}/(\text{PWM0PRD}+1) = 128/(255+1) = 1/2$$

$$\text{PWM clock} = F_{sys} = 4 \text{ MHz, PWM clock divided by 2}$$

$$\text{PWM0 output frequency} = 4 \text{ MHz}/2/(255+1) = 7812.5 \text{ Hz}$$

F0C	Bit 7	Bit 6	Bit 5	Bit 4	Bit 3	Bit 2	Bit 1	Bit 0
MFOC	CLKFLT	VCCFLT	–	TM1STP	TM0STP	PWM0CLR	PWM0PSC	
R/W	R/W	R/W	–	R/W	R/W	R/W	R/W	
Reset	0	0	–	0	0	0	0	0

F0C.2 **PWM0CLR**: PWM0 clear and hold
 0: PWM0 is running
 1: PWM0 is clear and hold

F0C.1~0 **PWM0PSC**: PWM0 prescaler, PWM0 clock source
 00: divided by 1
 01: divided by 2
 10: divided by 4
 11: divided by 8

F0D	Bit 7	Bit 6	Bit 5	Bit 4	Bit 3	Bit 2	Bit 1	Bit 0
PWM0D	PWM0D							
R/W	R/W							
Reset	0	0	0	0	0	0	0	0

F0D.7~0 **PWM0D**: PWM0 duty

R05	Bit 7	Bit 6	Bit 5	Bit 4	Bit 3	Bit 2	Bit 1	Bit 0
PAMODH	–	PA7MOD	–	–	–	–	PA4MOD	
R/W	–	W	–	–	–	–	W	
Reset	–	0	–	–	–	–	0	1

PA4MOD: PA4 I/O mode control
 00: Mode0
 R05.1~0 01: Mode1
 10: Mode2
 11: Mode3, used as PWM0 output with high sink

R06	Bit 7	Bit 6	Bit 5	Bit 4	Bit 3	Bit 2	Bit 1	Bit 0
PAMODL	PA3MOD		PA2MOD		PA1MOD		PA0MOD	
R/W	W		W		W		W	
Reset	0	1	0	1	0	1	0	1

PA3MOD: PA3 I/O mode control
 00: Mode0
 R06.7~6 01: Mode1
 10: Mode2
 11: Mode3, used as PWM0 output with high sink

R0D	Bit 7	Bit 6	Bit 5	Bit 4	Bit 3	Bit 2	Bit 1	Bit 0
PWM0PRD	PWM0PRD							
R/W	W							
Reset	1	1	1	1	1	1	1	1

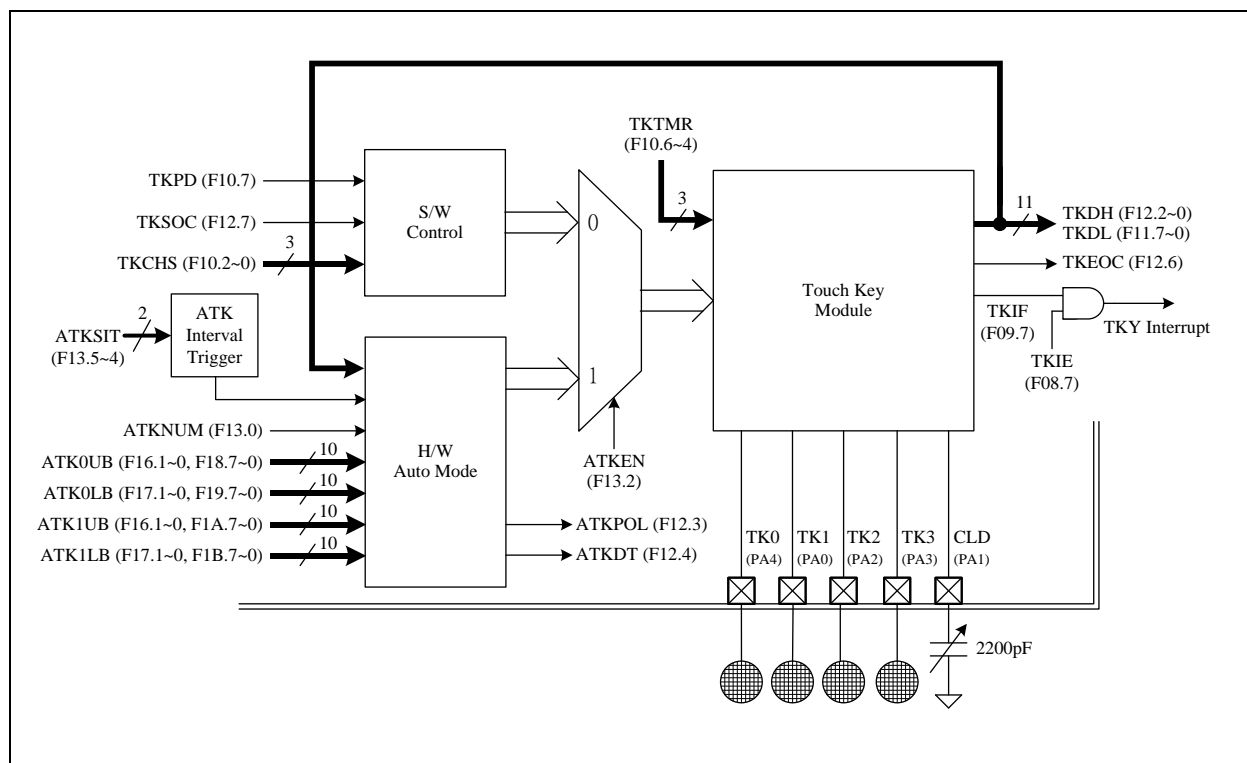
R0D.7~0 **PWM0PRD**: PWM0 period data

3.5 Touch Key (TM57M5526C only)

Only TM57M5526C supported the Touch Key function. The Touch Key offers an easy, simple and reliable method to implement finger touch detection. For most applications, it only requires an external capacitor component on CLD pin. The device support 4 channels touch key detection with S/W manual mode and 1~2 channel(s) touch key detection with H/W auto (ATK) mode. Only one mode can be active at a time.

To use the Touch Key, user must setup the Pin Mode (*see section 4*) correctly as below table. Setting Mode0 for Touch Key pin can pull up the pin and reduce the Key's mutual interference. While a TK pin is under scanning, TM57M5526C will disable the pull up resistor automatically.

Pin Mode Setting for Touch Key	TK0~1	TK2~3
Pin is not Touch Key	Mode0, 1, 2, 3	Mode0, 1, 2, 3
Pin is Touch Key, Idling	Mode0	Mode0
Pin is Touch Key, S/W Scanning	Mode0	Mode0
Pin is Touch Key, H/W Auto Scan	Mode0	N/A



Touch Key Block Diagram

S/W Manual Mode Touch Key Detection

All touch key (TK0~TK3) can be used for S/W mode, it can be select by TKCHS (F10.2~0) bits. To start the S/W mode, ATKEN (F13.2) and TKPD (F10.7) have to be cleared. After setting the TKSOC (F12.7) bit, the touch key starts conversion. The TKSOC bit can be automatically cleared while end of conversion. However, if the system clock is too slow, H/W might lose the auto clear TKSOC capability. “TKEOC=0” means conversion is in process, while “TKEOC=1” means the conversion is finish. When conversion is finish, TKIF (F09.7) will be set to 1 and generate interrupt if TKIE (F08.6) is set. After TKEOC’s (F12.6) edge rising, user must wait at least 10 us for next conversion. The touch key counting values is stored into the 11 bits touch key data count “TKDH (F12.2~0), TKDL (F11.7~0)”. Reduce/Increase TKTMR (F10.6~4), can reduce/increase touch key data count to adapt the system board circumstances.

The Touch Key unit has an internal built-in reference capacitor to simulate the Key behavior. Set TKCHS=7 and start the Touch Key can get the TKDATA of this reference capacitor. Since the internal capacitor never affected by water or mobile phone, it is useful for comparing the environment background noise.

◇ Example: S/W Mode, Touch Key channel=TK3 (PA3).

```

MOV LW    00xx11xxB      ; PA3MOD=0, PA1MOD=3
MOV WR    PAMODH           ; Set PA3MOD as Mode0 for touch key input
                                     ; Set PA1MOD as Mode3 for touch key CLD
BSF       PAD, 3           ; Set PA3 is input with pull-up

MOV LW    1 100x011B     ; TKPD=1
MOV WF    TKCTL1           ; TKTMR=4, TKCHS=3 (TK3)

BCF       TKPD             ; TKPD=0
:
BSF       TKSOC            ; TKSOC=1, touch key start conversion
NOP
    
```

WAIT_TK:

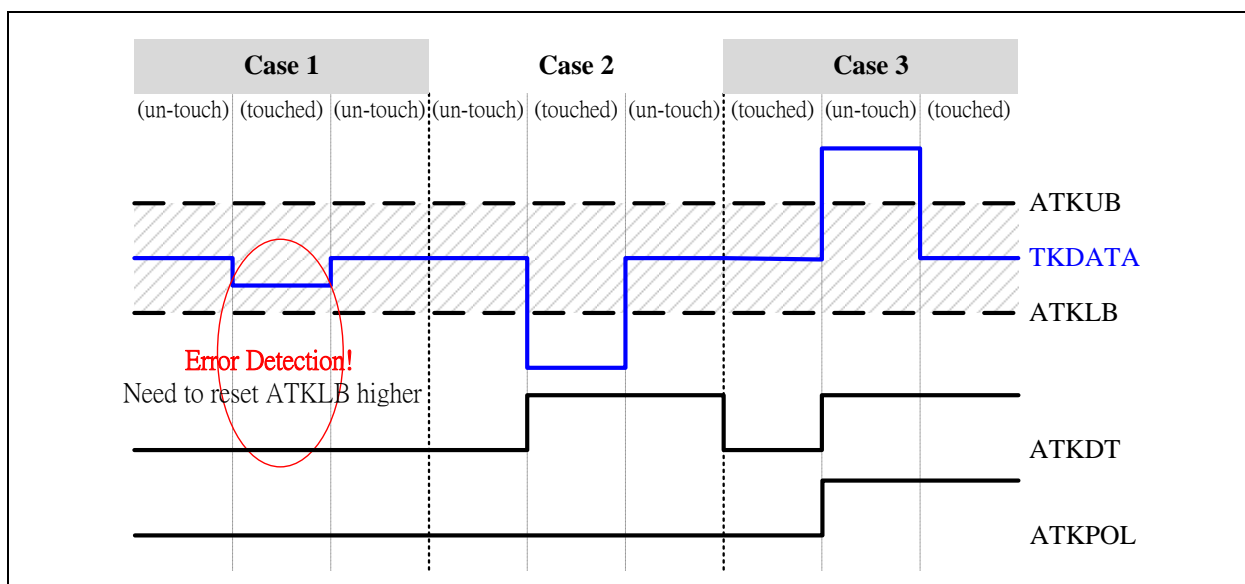
```

BTFS     TKEOC             ; Polling TKEOC
GOTO     WAIT_TK          ; Waiting touch key conversion finish

MOV FW    TKDH             ; Read TKDH[2:0]
MOV FW    TKDL             ; Read TKDL[7:0]
    
```


H/W Auto Mode Touch Key (ATK) Detection

Only TK0~TK1 are eligible for H/W auto mode by setting ATKNUM (F13.0). This function can work in normal/IDLE mode and save the S/W effort as well as minimize the chip current consumption. To use this function, user need to set ATKEN=1 and TKPD=1 to enable H/W fully control the TK unit. If ATKEN is set to "1", the ATK Interval Timer will generate an overflow flag after time out to trigger the touch key H/W auto mode starting. That can enable H/W control the touch key module fully. H/W then automatically detects the TK0~TK1's TK Data Count at every 28/56/112/224 ms (@V_{DD}=5V) rate by ATKSIT (F13.5~4). If a keys' TK Data Count is less than the pre-set compare lower boundary ATKnLB (n=0~1) or more than the pre-set compare upper boundary ATKnUB (n=0~1), H/W will generate interrupt flag TKIF (F9.7). It generates auto touch key interrupt and wake up CPU if the TKIE (F8.7) bit is set. At the same time, H/W will also record the compare result in the ATKDT (F14.4) and the scan polarity in the ATKPOL (F14.3). User can switch the TK module to S/W Manual Mode after the TK interrupt and identify/confirm the Key touch event.



◇ Example: H/W Auto Mode, Touch key auto scan number is 2 keys (TK0~TK1)

```

ORG      000H          ; Reset Vector
GOTO     START        ; Goto user program address

ORG      001H          ; All interrupt vector
GOTO     INT

START:
ORG      002H
MOVLW   xxx1xx11B    ; Set PAD[0]=1, PAD[1]=1, PAD[4]=1
MOVWF   PAD

MOVLW   xxxxxx00B    ; Set PA4 Pin Mode as Mode0
MOVWR   PAMODH

MOVLW   xxxx11 00B   ; Set PA0 Pin Mode as Mode0
MOVWR   PAMODL        ; Set PA1 Pin Mode as Mode3
    
```

```

MOV LW    1100xxxxB    ; Make sure TKPD=1
MOV W F   TKCTL        ; Set TKTMR= Level 4

MOV LW    xx00x0x1B  ; ATKSIT=00B (ATK scan interval time=28ms)
MOV W F   ATKCTL       ; ATKEN=0 (ATK scan disable)
                        ; ATKNUM=1 (TK auto scan number=2)

MOV LW    00H          ; Set ATK compare boundary
MOV W F   ATKUBH
MOV LW    00H
MOV W F   ATKLBH

MOV LW    DCH
MOV W F   ATK0UBL      ;Set ATK0UB=220
MOV LW    C8H
MOV W F   ATK0LBL      ;Set ATK0LB=200

MOV LW    D7H
MOV W F   ATK1UBL      ;Set ATK1UB=215
MOV LW    C5H
MOV W F   ATK1LBL      ;Set ATK1LB=197

MOV LW    01111111B
MOV W F   INTIF        ; Clear ATK interrupt request flag

MOV LW    10000000B
MOV W F   INTIE        ; Enable ATK interrupt

MAIN:
BSF      ATKEN         ; ATKEN=1, enable TK H/W auto Mode

(SLEEP)
:
:
GOTO     MAIN

INT:
MOV W F   20H          ; Store W data to FRAM 20H
MOV W F   STATUS       ; Get STATUS data
MOV W F   21H          ; Store STATUS data to FRAM 21H

BT FSC    TKIF         ; Check TKIF bit
CALL      INT_ATK      ; TKIF=0, exit interrupt subroutine
                        ; TKIF interrupt service routine

...
GOTO     EXIT_INT

INT_ATK:
MOV LW    01111111B
MOV W F   INTIF        ; Clear TK interrupt request flag

```

```

MOVFW    TKDH
MOVWF    22H           ; Store ATK scan result to FRAM 22H
RET
    
```

EXIT_INT:

```

MOVFW    21H           ; Get FRAM 21H data
MOVWF    STATUS       ; Restore STATUS data
MOVFW    20H           ; Restore W data
RETI     ; Return from interrupt
    
```

F08	Bit 7	Bit 6	Bit 5	Bit 4	Bit 3	Bit 2	Bit 1	Bit 0
INTIE	TKIE	–	TM1IE	TM0IE	WKTIE	INT2IE	–	INT0IE
R/W	R/W	–	R/W	R/W	R/W	R/W	–	R/W
Reset	0	–	0	0	0	0	–	0

F08.7 **TKIE**: Auto touch key interrupt enable

0: disable

1: enable

F09	Bit 7	Bit 6	Bit 5	Bit 4	Bit 3	Bit 2	Bit 1	Bit 0
INTIF	TKIF	–	TM1IF	TM0IF	WKTIF	INT2IF	–	INT0IF
R/W	R/W	–	R/W	R/W	R/W	R/W	–	R/W
Reset	0	–	0	0	0	0	–	0

F09.7 **TKIF**: Touch Key interrupt event pending flag

This bit is set by H/W while Key's TK Data Count is over the pre-set compare threshold range (H/W auto mode) or TK is end of conversion (S/W manual mode), write 0 to this bit will clear this flag

F10	Bit 7	Bit 6	Bit 5	Bit 4	Bit 3	Bit 2	Bit 1	Bit 0
TKCTL	TKPD	TKTMR			–	TKCHS		
R/W	R/W	R/W			–	R/W		
Reset	1	0	0	0	–	0	0	0

F10.7 **TKPD**: Touch key power down

0: Touch key running

1: Touch key power down

F10.6~4 **TKTMR**: Touch key conversion time select

000: Level 0 (shortest)

001: Level 1

010: Level 2

011: Level 3

100: Level 4

101: Level 5

110: Level 6

111: Level 7 (longest)

F10.2~0 **TKCHS**: Touch key channel select

000: TK0 (PA4) 100: reserved

001: TK1 (PA0) 100: reserved

100: TK2 (PA2) 100: reserved

011: TK3 (PA3) 111: internal reference capacitor

F11	Bit 7	Bit 6	Bit 5	Bit 4	Bit 3	Bit 2	Bit 1	Bit 0
TKDL	TKDL							
R/W	R							
Reset	0	0	0	0	0	0	0	0

F11.7~0 **TKDL**: Touch key data LSB[7:0]

F12	Bit 7	Bit 6	Bit 5	Bit 4	Bit 3	Bit 2	Bit 1	Bit 0
TKDH	TKSOC	TKEOC	–	ATKDT	ATKPOL	TKDH		
R/W	R/W	R	–	R	R	R		
Reset	0	0	–	0	0	0	0	0

F12.7 **TKSOC**: Touch key start of conversion, rising edge to start.
H/W auto cleared while end of conversion

F12.6 **TKEOC**: Touch key end of conversion
0: conversion is in process
1: end of conversion

F12.4 **ATKDT**: Touch key auto scan result
0: TK0 has a touch event
1: TK1 has a touch event

F12.3 **ATKPOL**: Touch key auto scan polarity
0: Touch key counter data is lower than lower boundary
1: Touch key counter data is higher than upper boundary

F12.2~0 **TKDH**: Touch key data MSB[10:8]

F13	Bit 7	Bit 6	Bit 5	Bit 4	Bit 3	Bit 2	Bit 1	Bit 0
ATKCTL	–	–	ATKSIT		–	ATKEN	–	ATKNUM
R/W	–	–	R/W		–	R/W	–	R/W
Reset	–	–	0	0	–	0	–	1

F13.5~4 **ATKSIT**: Touch Key auto scan interval time
00: 26 ms @V_{DD}=5V, 37.5 ms @V_{DD}=3V
01: 52 ms @V_{DD}=5V, 75 ms @V_{DD}=3V
10: 104 ms @V_{DD}=5V, 150 ms @V_{DD}=3V
11: 208 ms @V_{DD}=5V, 300 ms @V_{DD}=3V

F13.2 **ATKEN**: Touch key auto scan mode enable
0: disable H/W Auto Mode
1: enable H/W Auto Mode

F13 0 **ATKNUM**: Touch key auto scan channel number
0: only detect TK0
1: detect TK0 and TK1

F16	Bit 7	Bit 6	Bit 5	Bit 4	Bit 3	Bit 2	Bit 1	Bit 0
ATKUBH	–	–	–	–	ATK1UBH		ATK0UBH	
R/W	–	–	–	–	R/W		R/W	
Reset	–	–	–	–	1	1	1	1

F16.3~2 **ATK1UBH**: Touch key auto scan TK1 upper boundary MSB[9:8]

F16.1~0 **ATK0UBH**: Touch key auto scan TK0 upper boundary MSB[9:8]

F17	Bit 7	Bit 6	Bit 5	Bit 4	Bit 3	Bit 2	Bit 1	Bit 0
ATKLBH	–	–	–	–	ATK1LBH		ATK0LBH	
R/W	–	–	–	–	R/W		R/W	
Reset	–	–	–	–	0	0	0	0

F17.3~2 **ATK1LBH**: Touch key auto scan TK1 lower boundary MSB[9:8]

F17.1~0 **ATK0LBH**: Touch key auto scan TK0 lower boundary MSB[9:8]

F18	Bit 7	Bit 6	Bit 5	Bit 4	Bit 3	Bit 2	Bit 1	Bit 0
ATK0UBL	ATK0UBL							
R/W	R/W							
Reset	1	1	1	1	1	1	1	1

F18.7~0 **ATK0UBL**: Touch key auto scan TK0 upper boundary LSB[7:0]

F19	Bit 7	Bit 6	Bit 5	Bit 4	Bit 3	Bit 2	Bit 1	Bit 0
ATK0LBL	ATK0LBL							
R/W	R/W							
Reset	0	0	0	0	0	0	0	0

F19.7~0 **ATK0LBL**: Touch key auto scan TK0 lower boundary LSB[7:0]

F1A	Bit 7	Bit 6	Bit 5	Bit 4	Bit 3	Bit 2	Bit 1	Bit 0
ATK1UBL	ATK1UBL							
R/W	R/W							
Reset	1	1	1	1	1	1	1	1

F1A.7~0 **ATK1UBL**: Touch key auto scan TK1 upper boundary LSB[7:0]

F1B	Bit 7	Bit 6	Bit 5	Bit 4	Bit 3	Bit 2	Bit 1	Bit 0
ATK1LBL	ATK1LBL							
R/W	R/W							
Reset	0	0	0	0	0	0	0	0

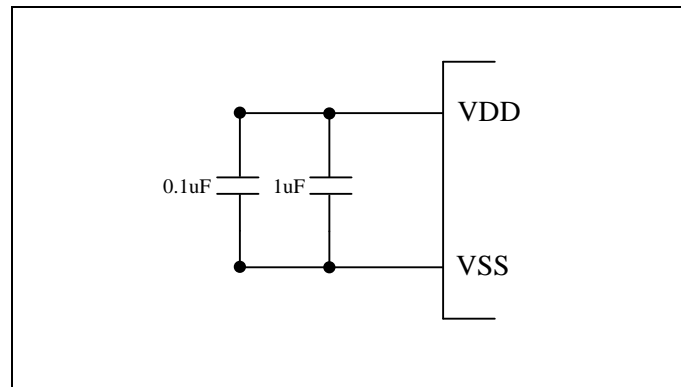
F1B.7~0 **ATK1LBL**: Touch key auto scan TK1 lower boundary LSB[7:0]

R06	Bit 7	Bit 6	Bit 5	Bit 4	Bit 3	Bit 2	Bit 1	Bit 0
PAMODL	PA3MOD		PA2MOD		PA1MOD		PA0MOD	
R/W	W		W		W		W	
Reset	0	1	0	1	0	1	0	1

R06.3~2 **PA1MOD**: PA1 I/O mode control
 00: Mode0
 01: Mode1
 10: Mode2
 11: Mode3, used as Touch Key CLD

3.6 System Clock Oscillator

System clock can be operated in two different oscillation modes. The two oscillation modes are FIRC and SIRC. In the Fast Internal RC mode (FIRC), the on-chip oscillator generates 8 MHz system clock. For the operation voltage can be protected by LVR, we suggest setting the FIRC/2=4 MHz as system clock. In the Slow Internal RC mode (SIRC), the on-chip oscillator generates 80 KHz system clock. Since power noise degrades the performance of Internal Clock Oscillator, placing power supply bypass capacitors 1 μ F and 0.1 μ F very close to VDD/VSS pins to improve the stability of clock and the overall system.



Internal RC Mode

4. I/O Port

4.1 PA0-4

These pins can be used as Schmitt-trigger input, CMOS push-pull output or Open-drain output. The pull-up resistor is assignable to each pin by S/W setting. User can set each pin by their Pin Mode register. There are 4 kinds of pin modes Mode0, Mode1, Mode2 and Mode3 for each pin can be selected.

Mode	PA0-4 pin function		PXn SFR data	Pin State	Resistor Pull-up	Digital Input
Mode 0	Open Drain		0	Drive Low	N	N
			1	Pull-up	Y	Y
Mode 1	Open Drain		0	Drive Low	N	N
			1	Hi-Z	N	Y
Mode 2	CMOS Output		0	Drive Low	N	N
			1	Drive High	N	N
Mode 3	Alternative Function	Wake-up	0	Drive Low	N	N
		Touch Key CLD (TM57M5526C only)	x	–	N	N
		PWM output	0	PWM0	N	N
			1			

PA0-4 I/O Pin Function Table

If a PA0-4 pin is used for Schmitt-trigger input, S/W must set the I/O pin to Mode0 or Mode1 and set the corresponding Port Data SFR to 1 to disable the pin's output driving circuitry. Beside I/O port function, each PA0-4 pin has one or more alternative functions. Most of the functions are activated by setting the individual pin mode control SFR to Mode3. Reading the pin data (PA0-4) has different meaning. In "Read-Modify-Write" instruction, CPU actually reads the output data register. In the other instructions, CPU reads the pin state. The so-called "Read-Modify-Write" instruction includes BSF, BCF and all instructions using F-Plane as destination.

Pin Name	Function	INT	WAKEUP	TKY	Mode3
PA0	–	INT0	WAKEUP	TK1	WAKEUP
PA1	–	–	–	CLD	CLD
PA2	TMOCKI	–	WAKEUP	TK2	WAKEUP
PA3	PWM0	–	–	TK3	PWM0
PA4	PWM0	–	–	TK0	PWM0

PA0-4 multi-function Table

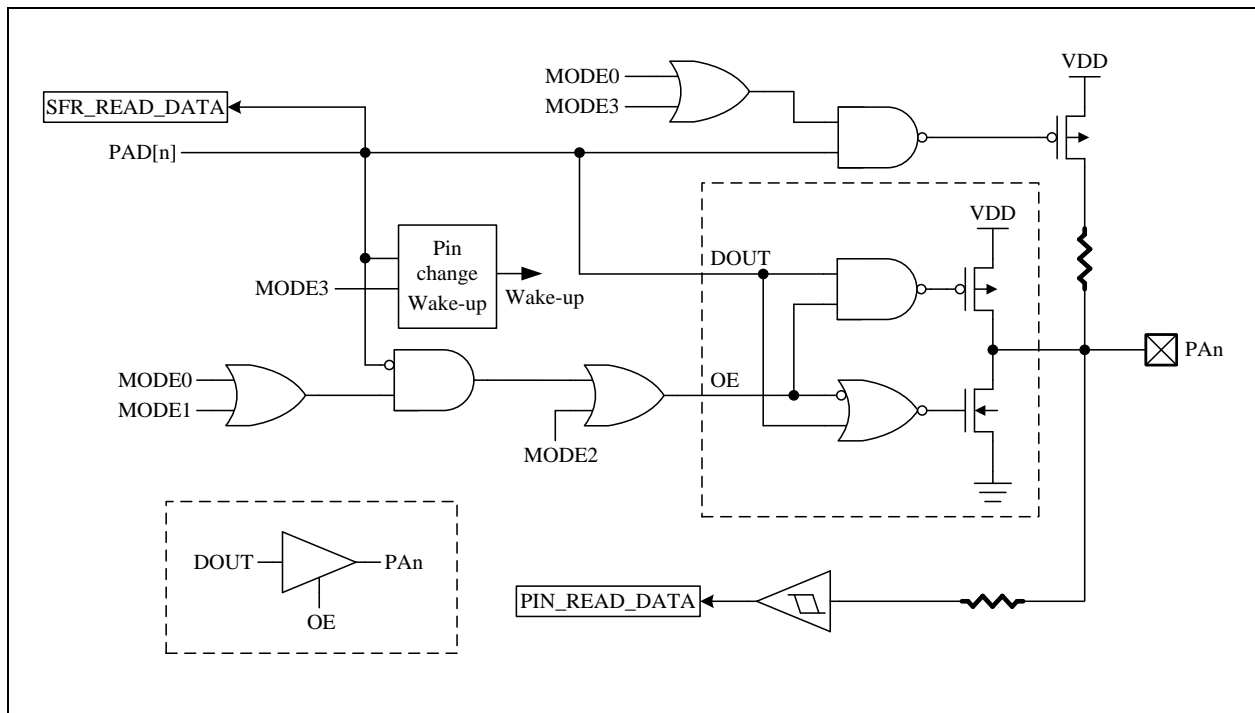
The necessary SFR setting for PA0-4 pin's alternative function is list below.

Alternative Function	Mode	PXn SFR data	Pin State	Other necessary SFR setting
TMOCKI, INTO	0	1	Input with Pull-up	TMOCTL, INTIE
	1	1	Input	
TK0~TK3 (TM57M5526C only)	0	1	Touch Key Idling with Pull-up	TKCTL, ATKCTL
			Touch Key Scanning without Pull-up (automatically)	
CLD (TM57M5526C only)	3	x	Touch Key Idling with Pull-up	-
Wake-up	3	0	Input	-
		1	Input with Pull-up	
PWM0	3	x	PWM CMOS Push-Pull Output	MF0C

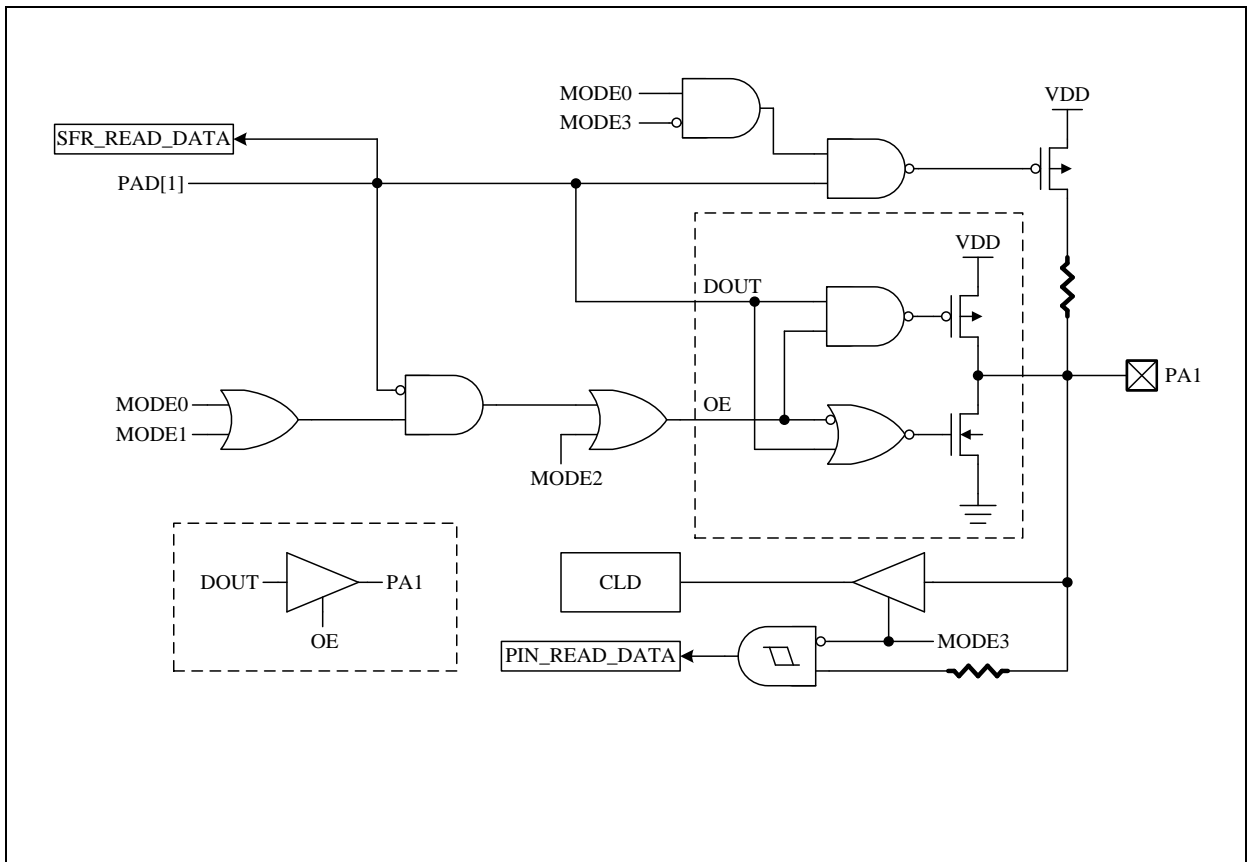
Mode Setting for PA0-4 Alternative Function

For tables above, a “CMOS Output” pin means it can sink and drive at least 4mA current. It is not recommended to use such pin as input function.

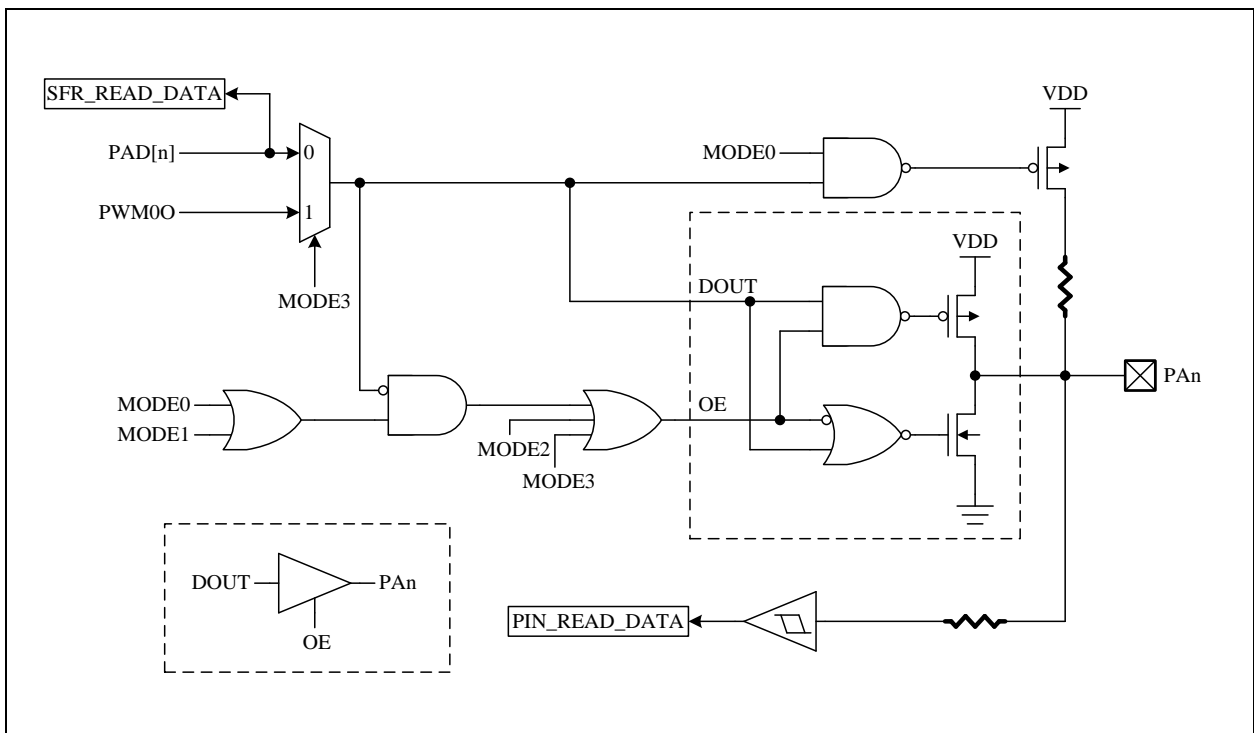
An “Open Drain” pin means it can sink at least 4mA current but only drive a small current (<20μA). It can be used as input or output function and typically needs an external pull up resistor.



PA0, PA2 Pin Structure



PA1 Pin Structure



PA3, PA4 Pin Structure

◇ Example: Set PA0 as Schmitt-trigger input with pull-up (Mode0)

```

MOVLW    xxxxxx1B
MOVWF    PAD
MOVLW    xxxxxx00B
MOVWR    PAMODL                ; Set PA0 as Schmitt-trigger input with pull-up
    
```

◇ Example: Set PA0 as Schmitt-trigger input without pull-up (Mode1)

```

MOVLW    xxxxxx1B
MOVWF    PAD
MOVLW    xxxxxx01B
MOVWR    PAMODL                ; Set PA0 as Schmitt-trigger input without pull-up
    
```

◇ Example: Set PA0 as CMOS push-pull output mode and drive Low (Mode2)

```

MOVLW    xxxxxx0B                ; PAD[0] =0
MOVWF    PAD                    ; Set PA0 as CMOS push-pull output Low
MOVLW    xxxxxx10B
MOVWR    PAMODL
    
```

◇ Example: Set PA0 as Schmitt-trigger input and pin change wake up control (Mode3)

```

MOVLW    xxxxxx1B
MOVWF    PAD
MOVLW    xxxxxx11B                ; Set PA0 as Schmitt-trigger input with pull-high
MOVWR    PAMODL                ; and enable low level wake up
    
```

◇ Example: Set PA1 as TKY CLD (Mode3) (TM57M5526C only)

```

MOVLW    xxxx11xxB
MOVWR    PAMODL                ; Set PA1 as TKY CLD
    
```

◇ Example: Set PA3 and PA4 as PWM0 output (Mode3)

```

MOVLW    xxxxxx11B
MOVWR    PAMODH                ; Set PA4 as PWM0 output
MOVLW    11xxxxxxB
MOVWR    PAMODL                ; Set PA3 as PWM0 output
    
```

F05	Bit 7	Bit 6	Bit 5	Bit 4	Bit 3	Bit 2	Bit 1	Bit 0
PAD	PAD7	–	–	PAD				
R/W	R/W	–	–	R/W				
Reset	1	–	–	1	1	1	1	1

F05.4~0 **PAD**: PA4~PA0 data
 0: output low
 1: output high or Schmitt-trigger input mode

R05	Bit 7	Bit 6	Bit 5	Bit 4	Bit 3	Bit 2	Bit 1	Bit 0
PAMODH	–	PA7MOD	–	–	–	–	PA4MOD	
R/W	–	W	–	–	–	–	W	
Reset	–	0	–	–	–	–	0	1

R05.1~0 **PA4MOD**: PA4 I/O mode control
 00: Mode0
 01: Mode1
 10: Mode2
 11: Mode3, used as PWM0 output with high sink

R06	Bit 7	Bit 6	Bit 5	Bit 4	Bit 3	Bit 2	Bit 1	Bit 0
PAMODL	PA3MOD		PA2MOD		PA1MOD		PA0MOD	
R/W	W		W		W		W	
Reset	0	1	0	1	0	1	0	1

R06.7~6 **PA3MOD**: PA3 Pin Mode Control
 00: Mode0
 01: Mode1
 10: Mode2
 11: Mode3, used as PWM0 output with high sink

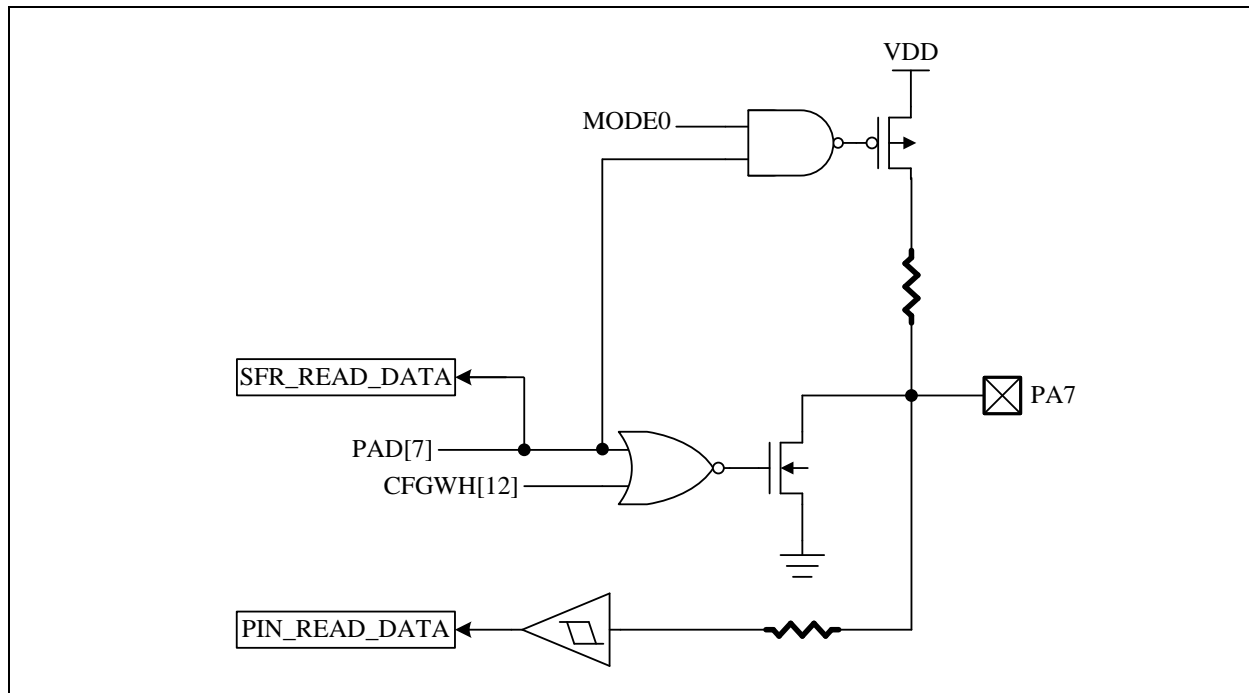
R06.5~4 **PA2MOD**: PA2 Pin Mode Control
 00: Mode0
 01: Mode1
 10: Mode2
 11: Mode3, used as pin change wake up

R06.3~2 **PA1MOD**: PA1 Pin Mode Control
 00: Mode0
 01: Mode1
 10: Mode2
 11: Mode3, used as TKY CLD (TM57M5526C only)

R06.1~0 **PA0MOD**: PA0 Pin Mode Control
 00: Mode0
 01: Mode1
 10: Mode2
 11: Mode3, used as pin change wake up

4.2 PA7

PA7 can be used in Schmitt-trigger input or open-drain output which is setting by the PAD[7] (F05.7) bit. When the PAD[7] bit is set, PA7 is assigned as Schmitt-trigger input mode, otherwise is assigned as open-drain output mode and output low. The pull-up resistor is connected or not to this pin by pin mode setting. If PA7's pin mode is set as Mode0, PA7 can be used in Schmitt-trigger input with pull-up or open-drain output. Otherwise, the pull-up resistor is disabled if PA7's pin mode is set as Mode1. When CFGWH[12] is set, PA7 is only used in Schmitt-trigger input for external active low reset.



How to control PA7 status can be concluded as following list.

Mode	PA7 pin function	PAD7 SFR data	Pin State	Resistor Pull-up	Digital Input
Mode 0	Open Drain	0	Drive Low	N	N
		1	Pull-up	Y	Y
Mode 1	Open Drain	0	Drive Low	N	N
		1	Hi-Z	N	Y

◇ Example: Read state from PA7.

Condition: CFGWH[12] is set to "0". If CFGWH[12] = "1", then PA7 pin is external reset pin function.

```

BTFSS    PAD,7
GOTO     LOOP_A      ; If PA7=0
GOTO     LOOP_B      ; If PA7=1
    
```

F05	Bit 7	Bit 6	Bit 5	Bit 4	Bit 3	Bit 2	Bit 1	Bit 0
PAD	PAD7	–	–	PAD				
R/W	R/W	–	–	R/W				
Reset	1	–	–	1	1	1	1	1

F05.7 **PAD7:** PA7 data or pin mode control
 0: PA7 is open-drain output mode and output low
 1: PA7 is Schmitt-trigger input mode

R05	Bit 7	Bit 6	Bit 5	Bit 4	Bit 3	Bit 2	Bit 1	Bit 0
PAMODH	–	PA7MOD	–	–	–	–	PA4MOD	
R/W	–	W	–	–	–	–	W	
Reset	–	0	–	–	–	–	0	1

R05.6 **PA7MOD:** PA7 I/O mode control
 0: Mode0
 1: Mode1

MEMORY MAP

F-Plane

Name	Address	R/W	Rst	Description
(F00) INDF				Function related to: RAM W/R
INDF	00.7~0	R/W	-	Not a physical register, addressing INDF actually point to the register whose address is contained in the FSR register
(F01) TM0				Function related to: Timer0
TM0	01.7~0	R/W	0	Timer0 content
(F02) PCL				Function related to: Programming Counter
PCL	02.7~0	R/W	0	Programming counter LSB[7:0]
(F03) STATUS				Function related to: Status
GB1	03.7	R/W	0	General purpose bit 1
GB0	03.6	R/W	0	General purpose bit 0
RAMBK	03.5	R/W	0	FRAM Bank selection, 0: Bank0, 1: Bank1
TO	03.4	R	0	WDT time out flag
PD	03.3	R	0	STOP mode flag
Z	03.2	R/W	0	Zero flag
DC	03.1	R/W	0	Decimal Carry flag or Decimal/Borrow flag
C	03.0	R/W	0	Carry flag or /Borrow flag
(F04) FSR				Function related to: RAM W/R
FSR	04.6~0	R/W	-	File select register, indirect address mode pointer
(F05) PAD				Function related to: Port A
PAD7	05.7	R	-	PA7 pin or “data register” state
		W	1	0: PA7 is open-drain output mode 1: PA7 is Schmitt-trigger input mode
PAD	05.4~0	R	-	Port A pin or “data register” state
		W	1F	Port A output data register
(F08) INTIE				Function related to: Interrupt Enable
TKIE <i>(TM57M5526C only)</i>	08.7	R/W	0	Touch key interrupt enable 0: disable 1: enable
TM1IE	08.5	R/W	0	Timer1 interrupt enable 0: disable 1: enable
TM0IE	08.4	R/W	0	Timer0 interrupt enable 0: disable 1: enable
WKTIE	08.3	R/W	0	Wakeup timer interrupt enable 0: disable 1: enable
INT2IE	08.2	R/W	0	INT2 (PA7) falling interrupt enable 0: disable 1: enable
INT0IE	08.0	R/W	0	INT0 (PA0) falling/rising interrupt enable 0: disable 1: enable

Name	Address	R/W	Rst	Description
(F09) INTIF				Function related to: Interrupt Flag
TKIF <i>(TM57M5526C only)</i>	09.7	R	-	Touch Key interrupt event pending flag, set by H/W while Key's TK Data Count is over the pre-set compare threshold range (H/W auto mode) or TK is end of conversion (S/W manual mode)
		W	0	0: clear this flag 1: no action
TM1IF	09.5	R	-	Timer1 interrupt event pending flag, set by H/W while Timer1 overflows
		W	0	0: clear this flag 1: no action
TM0IF	09.4	R	-	Timer0 interrupt event pending flag, set by H/W while Timer0 overflows
		W	0	0: clear this flag 1: no action
WKTIF	09.3	R	-	WKT interrupt event pending flag, set by H/W while WKT is timeout
		W	0	0: clear this flag 1: no action
INT2IF	09.2	R	-	INT2 (PA7) pin falling interrupt pending flag, set by H/W at INT2 pin's falling edge
		W	0	0: clear this flag 1: no action
INT0IF	09.0	R	-	INT0 (PA0) pin falling/rising interrupt pending flag, set by H/W at INT0 pin's falling/rising edge
		W	0	0: clear this flag 1: no action
(F0A) PCH				Function related to: Programming Counter
PCH	0A.2~0	R/W	0	Programming counter MSB[10:8]
(F0B) CLKCTL				Function related to: Fsys
SLOWSTP	0B.4	R/W	0	Slow-clock stop 0: Slow-clock is running 1: Slow-clock stops running in Power-down mode
FASTSTP	0B.3	R/W	1	Fast-clock stop 0: Fast-clock is running 1: Fast-clock stops running
CPUCKS	0B.2	R/W	0	System clock source select 0: Slow-clock 1: Fast-clock (forbid using when CPUPSC=3)
CPUPSC	0B.1~0	R/W	3	System clock source prescaler. System clock source 00: divided by 16 01: divided by 4 10: divided by 2 11: divided by 1 (forbid using when CPUCKS=1)

Name	Address	R/W	Rst	Description
(F0C) MF0C				Function related to: Fsys/EFT/Timer0/Timer1/PWM0
CLKFLT	0C.7	R/W	0	Fsys clock filter for noise defending 0: Higher Fsys 1: Lower Fsys
VCCFLT	0C.6	R/W	0	VCC filter, enhance the chip's power noise immunity 0: disable 1: enable
TM1STP	0C.4	R/W	0	Timer1 counter stop 0: Release 1: Stop counting
TM0STP	0C.3	R/W	0	Timer0 counter stop 0: Release 1: Stop counting
PWM0CLR	0C.2	R/W	0	PWM0 clear and hold 0: PWM0 is running 1: PWM0 is clear and hold
PWM0PSC	0C.1~0	R/W	0	PWM0 prescaler, PWM0 clock source 00: divided by 1 01: divided by 2 10: divided by 4 11: divided by 8
(F0D) PWM0D				Function related to: PWM0
PWM0D	0D.7~0	R/W	0	PWM0 duty
(F0F) TM1				Function related to: Timer1
TM1	0F.7~0	R/W	0	Timer1 content
(F10) TKCTL (TM57M5526C only)				Function related to: Touch Key
TKPD	10.7	R/W	1	Touch key power down 0: Touch key running 1: Touch key power down
TKTMR	10.6~4	R/W	0	Touch key conversion time select 000: Level 0 (shortest) 001: Level 1 010: Level 2 011: Level 3 100: Level 4 101: Level 5 110: Level 6 111: Level 7 (longest)
TKCHS	10.2~0	R/W	0	Touch key channel select 000: TK0 (PA4) 001: TK1 (PA0) 010: TK2 (PA2) 011: TK3 (PA3) 100: reserved 101: reserved 110: reserved 111: internal reference capacitor
(F11) TKDL (TM57M5526C only)				Function related to: Touch Key
TKDL	11.7~0	R	0	Touch key data LSB[7:0]

Name	Address	R/W	Rst	Description
(F12) TKDH (TM57M5526C only)				Function related to: Touch Key
TKSOC	12.7	R/W	0	Touch Key start of conversion, rising edge to start H/W auto cleared while end of conversion
TKEOC	12.6	R	0	Touch key end of conversion 0: conversion is in process 1: end of conversion
ATKDT	12.4	R	0	Touch key auto scan result 0: TK0 has a touch event 1: TK1 has a touch event
ATKPOL	12.3	R	0	Touch key auto scan polarity 0: Touch key counter data is lower than lower boundary 1: Touch key counter data is higher than upper boundary
TKDH	12.2~0	R	0	Touch key data MSB[10:8]
(F13) ATKCTL (TM57M5526C only)				Function related to: Touch Key
ATKSIT	13.5~4	R/W	0	Touch Key auto scan interval time 00: 26 ms @VDD=5V, 37.5 ms @VDD=3V 01: 52 ms @VDD=5V, 75 ms @VDD=3V 10: 104 ms @VDD=5V, 150 ms @VDD=3V 11: 208 ms @VDD=5V, 300 ms @VDD=3V
ATKEN	13.2	R/W	0	Touch key auto scan mode enable 0: disable H/W auto mode 1: enable H/W auto mode
ATKNUM	13.0	R/W	1	Touch key auto scan channel number 0: only detect TK0 1: detect TK0 and TK1
(F16) ATKUBH (TM57M5526C only)				Function related to: Touch Key
ATK1UBH	16.3~2	R/W	3	Touch key auto scan TK1 upper boundary MSB[9:8]
ATK0UBH	16.1~0	R/W	3	Touch key auto scan TK0 upper boundary MSB[9:8]
(F17) ATKLBH (TM57M5526C only)				Function related to: Touch Key
ATK1LBH	17.3~2	R/W	0	Touch key auto scan TK1 lower boundary MSB[9:8]
ATK0LBH	17.1~0	R/W	0	Touch key auto scan TK0 lower boundary MSB[9:8]
(F18) ATK0UBL (TM57M5526C only)				Function related to: Touch Key
ATK0UBL	18.7~0	R/W	FF	Touch key auto scan TK0 upper boundary LSB[7:0]
(F19) ATK0LBL (TM57M5526C only)				Function related to: Touch Key
ATK0LBL	19.7~0	R/W	0	Touch key auto scan TK0 lower boundary LSB[7:0]
(F1A) ATK1UBL (TM57M5526C only)				Function related to: Touch Key
ATK1UBL	1A.7~0	R/W	FF	Touch key auto scan TK1 upper boundary LSB[7:0]
(F1B) ATK1LBL (TM57M5526C only)				Function related to: Touch Key
ATK1LBL	1B.7~0	R/W	0	Touch key auto scan TK1 lower boundary LSB[7:0]
(F1C) RSR				Function related to: RAM W/R
RSR	1C.7~0	R/W	-	R-Plane file select register, indirect address mode pointer
(F1D) DPL				Function related to: Table Read
DPL	1D.7~0	R/W	0	Table read low address, data ROM pointer (DPTR) low byte[7~0]
(F1E) DPH				Function related to: Table Read
DPH	1E.1~0	R/W	0	Table read high address, data ROM pointer (DPTR) high byte[9~8]

Name	Address	R/W	Rst	Description
(F1F) IRCF				
Function related to : Internal RC				
IRCF	1F.4~0	R/W	by SYS.	FIRC frequency adjustment 00H: central frequency . . 0FH: highest frequency 10H: lowest frequency . . 1FH: central frequency
User Data Memory				
FRAM	20~2F	R/W	-	FRAM common area (8 bytes)
	30~7F	R/W	-	FRAM Bank0 area (RAMBK=0, 88 bytes)
	30~7F	R/W	-	FRAM Bank1 area (RAMBK=1, 88 bytes)

R-Plane

Name	Address	R/W	Rst	Description
(R02) TM0CTL				Function related to: Timer0
TM0EDG	02.5	W	0	TM0CKI (PA2) edge selection for Timer0 prescaler count 0: TM0CKI (PA2) rising edge for Timer0 Prescaler count 1: TM0CKI (PA2) falling edge for Timer0 Prescaler count
TM0CKS	02.4	W	0	Timer0 clock source select 0: Instruction Cycle as Timer0 Prescaler clock 1: TM0CKI as Timer0 Prescaler clock
TM0PSC	02.3~0	W	0	Timer0 prescaler. Timer0 clock source 0000: divided by 1 0100: divided by 16 1xxx: divided by 256 0001: divided by 2 0101: divided by 32 0010: divided by 4 0110: divided by 64 0011: divided by 8 0111: divided by 128
(R03) PWRDN				Function related to: Power Down
PWRDN	03	W	-	Write this register to enter Power Down Mode
(R04) WDTCLR				Function related to: WDT
WDTCLR	04	W	-	Write this register to clear WDT/WKT
(R05) PAMODH				Function related to: Port A
PA7MOD	05.6	W	0	PA7 I/O mode control 0: Mode0 1: Mode1
PA4MOD	05.1~0	W	1	PA4 I/O mode control 00: Mode0 01: Mode1 10: Mode2 11: Mode3, used as PWM0 output with high sink
(R06) PAMODL				Function related to: Port A
PA3MOD	06.7~6	W	1	PA3 I/O mode control 00: Mode0 01: Mode1 10: Mode2 11: Mode3, used as PWM0 output with high sink
PA2MOD	06.5~4	W	1	PA2 I/O mode control 00: Mode0 01: Mode1 10: Mode2 11: Mode3, used as pin change wake up
PA1MOD	06.3~2	W	1	PA1 I/O mode control 00: Mode0 01: Mode1 10: Mode2 11: Mode3, used as TKY CLD (TM57M5526C only)
PA0MOD	06.1~0	W	1	PA0 I/O mode control 00: Mode0 01: Mode1 10: Mode2 11: Mode3, used as pin change wake up

Name	Address	R/W	Rst	Description
(R0B) MR0B				Function related to: STATUS/INT0/WKT/WDT
HWAUTO	0B.7	W	0	Auto save/restore STATUS w/o TO, PD 0: Disable 1: Enable
INT0EDG	0B.6	W	0	INT0 pin (PA0) edge interrupt event 0: INT0 (PA0) pin falling edge to trigger interrupt event 1: INT0 (PA0) pin rising edge to trigger interrupt event
WDTPSC	0B.3~2	W	3	WDT pre-scale option select 00: WDT period is 52 ms, @5V; 75 ms, @3V 01: WDT period is 104 ms, @5V; 150 ms, @3V 10: WDT period is 208 ms, @5V; 300 ms, @3V 11: WDT period is 416 ms, @5V; 600 ms, @3V
WKT PSC	0B.1~0	W	3	WKT pre-scale option select 00: WKT period is 26 ms, @5V; 37.5 ms, @3V 01: WKT period is 52ms, @5V; 75 ms, @3V 10: WKT period is 104 ms, @5V; 150 ms, @3V 11: WKT period is 208 ms, @5V; 300 ms, @3V
(R0D) PWM0PRD				Function related to: PWM0
PWM0PRD	0D.7~0	W	FF	PWM0 period data
(R0E) TM0RLD				Function related to: Timer0
TM0RLD	0E.7~0	W	0	Timer0 reload data
(R10) TM1CTL				Function related to: Timer1
TM1PSC	10.3~0	W	0	Timer1 prescaler. Timer1 clock source 0000: divided by 1 (Fsys/2) 0001: divided by 2 (Fsys/4) 0010: divided by 4 (Fsys/8) 0011: divided by 8 (Fsys/16) 0100: divided by 16 (Fsys/32) 0101: divided by 32 (Fsys/64) 0110: divided by 64 (Fsys/128) 0111: divided by 128 (Fsys/256) 1xxx: divided by 256 (Fsys/512)
(R11) TM1RLD				Function related to: Timer1
TM1RLD	11.7~0	W	0	Timer1 reload data

INSTRUCTION SET

Each instruction is a 14-bit word divided into an Op Code, which specifies the instruction type, and one or more operands, which further specify the operation of the instruction. The instructions can be categorized as byte-oriented, bit-oriented and literal operations list in the following table.

For byte-oriented instructions, “f” or “r” represents the address designator and “d” represents the destination designator. The address designator is used to specify which address in Program memory is to be used by the instruction. The destination designator specifies where the result of the operation is to be placed. If “d” is “0”, the result is placed in the W register. If “d” is “1”, the result is placed in the address specified in the instruction.

For bit-oriented instructions, “b” represents a bit field designator, which selects the number of the bit affected by the operation, while “f” represents the address designator. For literal operations, “k” represents the literal or constant value.

Field/Legend	Description
f	F-Plane Register File Address
r	R-Plane Register File Address
b	Bit address
k	Literal. Constant data or label
d	Destination selection field. 0: Working register 1: Register file
TO	WDT Time Out Flag
PD	Power Down Flag
W	Working Register
Z	Zero Flag
C	Carry Flag
DC	Decimal Carry Flag
PC	Program Counter
TOS	Top Of Stack
GIE	Global Interrupt Enable Flag (i-Flag)
[]	Option Field
()	Contents
.	Bit Field
B	Before
A	After
←	Assign direction

Mnemonic		Op Code	Cycle	Flag Affect	Description
Byte-Oriented File Register Instruction					
ADDWF	f, d	00 0111 dfff ffff	1	C, DC, Z	Add W and "f"
ANDWF	f, d	00 0101 dfff ffff	1	Z	AND W with "f"
CLRF	F	00 0001 1fff ffff	1	Z	Clear "f"
CLRWF		00 0001 0100 0000	1	Z	Clear W
COMF	f, d	00 1001 dfff ffff	1	Z	Complement "f"
DECWF	f, d	00 0011 dfff ffff	1	Z	Decrement "f"
DECFSZ	f, d	00 1011 dfff ffff	1 or 2	-	Decrement "f", skip if zero
INCF	f, d	00 1010 dfff ffff	1	Z	Increment "f"
INCFSZ	f, d	00 1111 dfff ffff	1 or 2	-	Increment "f", skip if zero
IORWF	f, d	00 0100 dfff ffff	1	Z	OR W with "f"
MOVWF	F	00 1000 0fff ffff	1	-	Move "f" to W
MOVRW	R	01 1111 00rr rrrr	1	-	Move "r" to W
MOVWF	F	00 0000 1fff ffff	1	-	Move W to "f"
MOVWR	R	01 1110 00rr rrrr	1	-	Move W to "r"
RLF	f, d	00 1101 dfff ffff	1	C	Rotate left "f" through carry
RRF	f, d	00 1100 dfff ffff	1	C	Rotate right "f" through carry
SUBWF	f, d	00 0010 dfff ffff	1	C, DC, Z	Subtract W from "f"
SWAPF	f, d	00 1110 dfff ffff	1	-	Swap nibbles in "f"
TESTZ	F	00 1000 1fff ffff	1	Z	Test if "f" is zero
XORWF	f, d	00 0110 dfff ffff	1	Z	XOR W with "f"
Bit-Oriented File Register Instruction					
BCF	f, b	01 000b bbff ffff	1	-	Clear "b" bit of "f"
BSF	f, b	01 001b bbff ffff	1	-	Set "b" bit of "f"
BTFSC	f, b	01 010b bbff ffff	1 or 2	-	Test "b" bit of "f", skip if clear
BTFSS	f, b	01 011b bbff ffff	1 or 2	-	Test "b" bit of "f", skip if set
Literal and Control Instruction					
ADDLW	k	01 1100 kkkk kkkk	1	C, DC, Z	Add Literal "k" and W
ANDLW	k	01 1011 kkkk kkkk	1	Z	AND Literal "k" with W
CALL	k	10 kkkk kkkk kkkk	2	-	Call subroutine "k"
CLRWDT		01 1110 0000 0100	1	TO, PD	Clear Watch Dog Timer
GOTO	k	11 kkkk kkkk kkkk	2	-	Jump to branch "k"
IORLW	k	01 1010 kkkk kkkk	1	Z	OR Literal "k" with W
MOVLW	k	01 1001 kkkk kkkk	1	-	Move Literal "k" to W
NOP		00 0000 0000 0000	1	-	No operation
RET		00 0000 0100 0000	2	-	Return from subroutine
RETI		00 0000 0110 0000	2	-	Return from interrupt
RETLW	k	01 1000 kkkk kkkk	2	-	Return with Literal in W
TABRL		00 0000 0101 0000	2	-	Lookup ROM low data to W
TABRH		00 0000 0101 1000	2	-	Lookup ROM high data to W
SLEEP		01 1110 0000 0011	1	TO, PD	Go into Power-down mode, Clock oscillation stops
XORLW	k	01 1101 kkkk kkkk	1	Z	XOR Literal "k" with W

ADDLW	Add Literal "k" and W	
Syntax	ADDLW k	
Operands	k : 00h ~ FFh	
Operation	$(W) \leftarrow (W) + k$	
Status Affected	C, DC, Z	
OP-Code	01 1100 kkkk kkkk	
Description	The contents of the W register are added to the eight-bit literal 'k' and the result is placed in the W register.	
Cycle	1	
Example	ADDLW 0x15	B : W = 0x10 A : W = 0x25

ADDWF	Add W and "f"	
Syntax	ADDWF f [,d]	
Operands	f : 00h ~ 7Fh, d : 0, 1	
Operation	$(\text{destination}) \leftarrow (W) + (f)$	
Status Affected	C, DC, Z	
OP-Code	00 0111 dfff ffff	
Description	Add the contents of the W register with register 'f'. If 'd' is 0, the result is stored in the W register. If 'd' is 1, the result is stored back in register 'f'.	
Cycle	1	
Example	ADDWF FSR, 0	B : W = 0x17, FSR = 0xC2 A : W = 0xD9, FSR = 0xC2

ANDLW	Logical AND Literal "k" with W	
Syntax	ANDLW k	
Operands	k : 00h ~ FFh	
Operation	$(W) \leftarrow (W) \text{ AND } k$	
Status Affected	Z	
OP-Code	01 1011 kkkk kkkk	
Description	The contents of W register are AND'ed with the eight-bit literal 'k'. The result is placed in the W register.	
Cycle	1	
Example	ANDLW 0x5F	B : W = 0xA3 A : W = 0x03

ANDWF	AND W with "f"	
Syntax	ANDWF f [,d]	
Operands	f : 00h ~ 7Fh, d : 0, 1	
Operation	$(\text{destination}) \leftarrow (W) \text{ AND } (f)$	
Status Affected	Z	
OP-Code	00 0101 dfff ffff	
Description	AND the W register with register 'f'. If 'd' is 0, the result is stored in the W register. If 'd' is 1, the result is stored back in register 'f'.	
Cycle	1	
Example	ANDWF FSR, 1	B : W = 0x17, FSR = 0xC2 A : W = 0x17, FSR = 0x02

BCF Clear "b" bit of "f"

Syntax	BCF f [,b]	
Operands	f : 00h ~ 3Fh, b : 0 ~ 7	
Operation	(f.b) ← 0	
Status Affected	-	
OP-Code	01 000b bbff ffff	
Description	Bit 'b' in register 'f' is cleared.	
Cycle	1	
Example	BCF FLAG_REG, 7	B : FLAG_REG = 0xC7 A : FLAG_REG = 0x47

BSF Set "b" bit of "f"

Syntax	BSF f [,b]	
Operands	f : 00h ~ 3Fh, b : 0 ~ 7	
Operation	(f.b) ← 1	
Status Affected	-	
OP-Code	01 001b bbff ffff	
Description	Bit 'b' in register 'f' is set.	
Cycle	1	
Example	BSF FLAG_REG, 7	B : FLAG_REG = 0x0A A : FLAG_REG = 0x8A

BTFSC Test "b" bit of "f", skip if clear(0)

Syntax	BTFSC f [,b]	
Operands	f : 00h ~ 3Fh, b : 0 ~ 7	
Operation	Skip next instruction if (f.b) = 0	
Status Affected	-	
OP-Code	01 010b bbff ffff	
Description	If bit 'b' in register 'f' is 1, then the next instruction is executed. If bit 'b' in register 'f' is 0, then the next instruction is discarded, and a NOP is executed instead, making this a 2nd cycle instruction.	
Cycle	1 or 2	
Example	LABEL1 BTFSC FLAG, 1 TRUE GOTO SUB1 FALSE ...	B : PC = LABEL1 A : if FLAG.1 = 0, PC = FALSE if FLAG.1 = 1, PC = TRUE

BTFSS Test "b" bit of "f", skip if set(1)

Syntax	BTFSS f [,b]	
Operands	f : 00h ~ 3Fh, b : 0 ~ 7	
Operation	Skip next instruction if (f.b) = 1	
Status Affected	-	
OP-Code	01 011b bbff ffff	
Description	If bit 'b' in register 'f' is 0, then the next instruction is executed. If bit 'b' in register 'f' is 1, then the next instruction is discarded, and a NOP is executed instead, making this a 2nd cycle instruction.	
Cycle	1 or 2	
Example	LABEL1 BTFSS FLAG, 1 TRUE GOTO SUB1 FALSE ...	B : PC = LABEL1 A : if FLAG.1 = 0, PC = TRUE if FLAG.1 = 1, PC = FALSE

CALL	Call subroutine "k"
Syntax	CALL k
Operands	k : 000h ~ FFFh
Operation	Operation: TOS \leftarrow (PC) + 1, PC.11~0 \leftarrow k
Status Affected	-
OP-Code	10 kkkk kkkk kkkk
Description	Call Subroutine. First, return address (PC+1) is pushed onto the stack. The 12-bit immediate address is loaded into PC bits <11:0>. CALL is a two-cycle instruction.
Cycle	2
Example	LABEL1 CALL SUB1 B : PC = LABEL1 A : PC = SUB1, TOS = LABEL1 + 1
CLRF	Clear "f"
Syntax	CLRF f
Operands	f : 00h ~ 7Fh
Operation	(f) \leftarrow 00h, Z \leftarrow 1
Status Affected	Z
OP-Code	00 0001 1fff ffff
Description	The contents of register 'f' are cleared and the Z bit is set.
Cycle	1
Example	CLRF FLAG_REG B : FLAG_REG = 0x5A A : FLAG_REG = 0x00, Z = 1
CLRW	Clear W
Syntax	CLRW
Operands	-
Operation	(W) \leftarrow 00h, Z \leftarrow 1
Status Affected	Z
OP-Code	00 0001 0100 0000
Description	W register is cleared and Z bit is set.
Cycle	1
Example	CLRW B : W = 0x5A A : W = 0x00, Z = 1
CLRWDT	Clear Watchdog Timer
Syntax	CLRWDT
Operands	-
Operation	WDT/WKT Timer \leftarrow 00h
Status Affected	TO, PD
OP-Code	01 1110 0000 0100
Description	CLRWDT instruction clears the Watchdog/Wakeup Timer
Cycle	1
Example	CLRWDT B : WDT counter = ? A : WDT counter = 0x00

COMF Complement "f"

Syntax	COMF f [,d]	
Operands	f : 00h ~ 7Fh, d : 0, 1	
Operation	(destination) ← (\bar{f})	
Status Affected	Z	
OP-Code	00 1001 dfff ffff	
Description	The contents of register 'f' are complemented. If 'd' is 0, the result is stored in W. If 'd' is 1, the result is stored back in register 'f'.	
Cycle	1	
Example	COMF REG1, 0	B : REG1 = 0x13 A : REG1 = 0x13, W = 0xEC

DECF Decrement "f"

Syntax	DECF f [,d]	
Operands	f : 00h ~ 7Fh, d : 0, 1	
Operation	(destination) ← (f) - 1	
Status Affected	Z	
OP-Code	00 0011 dfff ffff	
Description	Decrement register 'f'. If 'd' is 0, the result is stored in the W register. If 'd' is 1, the result is stored back in register 'f'.	
Cycle	1	
Example	DECF CNT, 1	B : CNT = 0x01, Z = 0 A : CNT = 0x00, Z = 1

DECFSZ Decrement "f", Skip if 0

Syntax	DECFSZ f [,d]	
Operands	f : 00h ~ 7Fh, d : 0, 1	
Operation	(destination) ← (f) - 1, skip next instruction if result is 0	
Status Affected	-	
OP-Code	00 1011 dfff ffff	
Description	The contents of register 'f' are decremented. If 'd' is 0, the result is placed in the W register. If 'd' is 1, the result is placed back in register 'f'. If the result is 1, the next instruction is executed. If the result is 0, then a NOP is executed instead, making it a 2 cycle instruction.	
Cycle	1 or 2	
Example	LABEL1 DECFSZ CNT, 1 GOTO LOOP CONTINUE	B : PC = LABEL1 A : CNT = CNT - 1 if CNT = 0, PC = CONTINUE if CNT ≠ 0, PC = LABEL1 + 1

GOTO Unconditional Branch

Syntax	GOTO k	
Operands	k : 000h ~ FFFh	
Operation	PC.11~0 ← k	
Status Affected	-	
OP-Code	11 kkkk kkkk kkkk	
Description	GOTO is an unconditional branch. The 12-bit immediate value is loaded into PC bits <11:0>. GOTO is a two-cycle instruction.	
Cycle	2	
Example	LABEL1 GOTO SUB1	B : PC = LABEL1 A : PC = SUB1

INCF	Increment "f"	
Syntax	INCF f [,d]	
Operands	f : 00h ~ 7Fh	
Operation	(destination) ← (f) + 1	
Status Affected	Z	
OP-Code	00 1010 dfff ffff	
Description	The contents of register 'f' are incremented. If 'd' is 0, the result is placed in the W register. If 'd' is 1, the result is placed back in register 'f'.	
Cycle	1	
Example	INCF CNT, 1	B : CNT = 0xFF, Z = 0 A : CNT = 0x00, Z = 1

INCFSZ	Increment "f", Skip if 0	
Syntax	INCFSZ f [,d]	
Operands	f : 00h ~ 7Fh, d : 0, 1	
Operation	(destination) ← (f) + 1, skip next instruction if result is 0	
Status Affected	-	
OP-Code	00 1111 dfff ffff	
Description	The contents of register 'f' are incremented. If 'd' is 0, the result is placed in the W register. If 'd' is 1, the result is placed back in register 'f'. If the result is 1, the next instruction is executed. If the result is 0, a NOP is executed instead, making it a 2 cycle instruction.	
Cycle	1 or 2	
Example	LABEL1 INCFSZ CNT, 1 GOTO LOOP CONTINUE	B : PC = LABEL1 A : CNT = CNT + 1 if CNT = 0, PC = CONTINUE if CNT ≠ 0, PC = LABEL1 + 1

IORLW	Inclusive OR Literal with W	
Syntax	IORLW k	
Operands	k : 00h ~ FFh	
Operation	(W) ← (W) OR k	
Status Affected	Z	
OP-Code	01 1010 kkkk kkkk	
Description	The contents of the W register are OR'ed with the eight-bit literal 'k'. The result is placed in the W register.	
Cycle	1	
Example	IORLW 0x35	B : W = 0x9A A : W = 0xBF, Z = 0

IORWF	Inclusive OR W with "f"	
Syntax	IORWF f [,d]	
Operands	f : 00h ~ 7Fh, d : 0, 1	
Operation	(destination) ← (W) OR k	
Status Affected	Z	
OP-Code	00 0100 dfff ffff	
Description	Inclusive OR the W register with register 'f'. If 'd' is 0, the result is placed in the W register. If 'd' is 1, the result is placed back in register 'f'.	
Cycle	1	
Example	IORWF RESULT, 0	B : RESULT = 0x13, W = 0x91 A : RESULT = 0x13, W = 0x93, Z = 0

MOVFW	Move "f" to W
Syntax	MOVFW f
Operands	f : 00h ~ 7Fh
Operation	(W) ← (f)
Status Affected	-
OP-Code	00 1000 0fff ffff
Description	The contents of register 'f' are moved to W register.
Cycle	1
Example	MOVFW FSR B : FSR = 0xC2, W = ? A : FSR = 0xC2, W = 0xC2
MOVLW	Move Literal to W
Syntax	MOVLW k
Operands	k : 00h ~ FFh
Operation	(W) ← k
Status Affected	-
OP-Code	01 1001 kkkk kkkk
Description	The eight-bit literal 'k' is loaded into W register. The don't cares will assemble as 0's.
Cycle	1
Example	MOVLW 0x5A B : W = ? A : W = 0x5A
MOVRW	Move "r" to W
Syntax	MOVRW r
Operands	r : 00h ~ 3Fh
Operation	(W) ← (r)
Status Affected	-
OP-Code	01 1111 00rr rrrr
Description	The contents of register 'r' are moved to W register.
Cycle	1
Example	MOVRW MR0B B : MR0B = 0x0F, W = ? A : MR0B = 0x0F, W = 0x0F
MOVWF	Move W to "f"
Syntax	MOVWF f
Operands	f : 00h ~ 7Fh
Operation	(f) ← (W)
Status Affected	-
OP-Code	00 0000 1fff ffff
Description	Move data from W register to register 'f'.
Cycle	1
Example	MOVWF REG1 B : REG1 = 0xFF, W = 0x4F A : REG1 = 0x4F, W = 0x4F

MOVWR Move W to 'r'

Syntax	MOVWR r	
Operands	r : 00h ~ 3Fh	
Operation	(r) ← (W)	
Status Affected	-	
OP-Code	01 1110 00rr rrrr	
Description	Move data from W register to register 'r'.	
Cycle	1	
Example	MOVWR REG1	B : REG1 = 0xFF, W = 0x4F A : REG1 = 0x4F, W = 0x4F

NOP No Operation

Syntax	NOP	
Operands	-	
Operation	No Operation	
Status Affected	-	
OP-Code	00 0000 0000 0000	
Description	No Operation	
Cycle	1	
Example	NOP	-

RET Return from Subroutine

Syntax	RET	
Operands	-	
Operation	PC ← TOS	
Status Affected	-	
OP-Code	00 0000 0100 0000	
Description	Return from subroutine. The stack is POPed and the top of the stack (TOS) is loaded into the program counter. This is a two-cycle instruction.	
Cycle	2	
Example	RET	A : PC = TOS

RETI Return from Interrupt

Syntax	RETI	
Operands	-	
Operation	PC ← TOS, GIE ← 1	
Status Affected	-	
OP-Code	00 0000 0110 0000	
Description	Return from Interrupt. Stack is POPed and Top-of-Stack (TOS) is loaded in to the PC. Interrupts are enabled. This is a two-cycle instruction.	
Cycle	2	
Example	RETI	A : PC = TOS, GIE = 1

RETLW Return with Literal in W

Syntax	RETLW k
Operands	k : 00h ~ FFh
Operation	PC ← TOS, (W) ← k
Status Affected	-
OP-Code	01 1000 kkkk kkkk
Description	The W register is loaded with the eight-bit literal 'k'. The program counter is loaded from the top of the stack (the return address). This is a two-cycle instruction.
Cycle	2
Example	<pre>CALL TABLE B : W = 0x07 : A : W = value of k8 TABLE ADDWF PCL, 1 RETLW k1 RETLW k2 : RETLW kn</pre>


TABRL Return DPTR low byte to W

Syntax	TABRL
Operands	-
Operation	(W) ← ROM[DPTR] low byte content, Where DPTR={DPH[max:8],DPL[7:0]}
Status Affected	-
OP-Code	00 0000 0101 0000
Description	The W register is loaded with low byte of ROM[DPTR]. This is a two-cycle instruction.
Cycle	2
Example	<pre>: : MOVLW (TAB1&0xFF) MOVWF DPL ; Where DPL is F-plane register MOVLW (TAB1>>8)&0xFF MOVWF DPH ; Where DPH is F-plane register TABRL ; W=0x89 TABRH ; W=0x37 ORG 0234H TAB1: .DT 0x3789, 0x2277 ;ROM data 14 bits</pre>

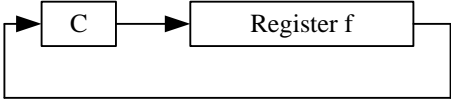
TABRH Return DPTR high byte to W

Syntax	TABRH
Operands	-
Operation	(W) ← ROM[DPTR] high byte content, Where DPTR={DPH[max:8],DPL[7:0]}
Status Affected	-
OP-Code	00 0000 0101 1000
Description	The W register is loaded with high byte of ROM[DPTR]. This is a two-cycle instruction.
Cycle	2

RLF Rotate Left "f" through Carry

Syntax	RLF f [,d]	
Operands	f : 00h ~ 7Fh, d : 0, 1	
Operation		
Status Affected	C	
OP-Code	00 1101 dfff ffff	
Description	The contents of register 'f' are rotated one bit to the left through the Carry Flag. If 'd' is 0, the result is placed in the W register. If 'd' is 1, the result is stored back in register 'f'.	
Cycle	1	
Example	RLF REG1, 0	B : REG1 = 1110 0110, C = 0 A : REG1 = 1110 0110 W = 1100 1100, C = 1

RRF Rotate Right "f" through Carry

Syntax	RRF f [,d]	
Operands	f : 00h ~ 7Fh, d : 0, 1	
Operation		
Status Affected	C	
OP-Code	00 1100 dfff ffff	
Description	The contents of register 'f' are rotated one bit to the right through the Carry Flag. If 'd' is 0, the result is placed in the W register. If 'd' is 1, the result is placed back in register 'f'.	
Cycle	1	
Example	RRF REG1, 0	B : REG1 = 1110 0110, C = 0 A : REG1 = 1110 0110 W = 0111 0011, C = 0

SLEEP Go into standby mode, Clock oscillation stops

Syntax	SLEEP	
Operands	-	
Operation	-	
Status Affected	TO, PD	
OP-Code	01 1110 0000 0011	
Description	Go into STOP mode with the oscillator stops.	
Cycle	1	
Example	SLEEP -	

SUBWF	Subtract W from 'f'	
Syntax	SUBWF f [,d]	
Operands	f : 00h ~ 7Fh, d : 0, 1	
Operation	(destination) ← (f) – (W)	
Status Affected	C, DC, Z	
OP-Code	00 0010 dfff ffff	
Description	Subtract (2's complement method) W register from register 'f'. If 'd' is 0, the result is stored in the W register. If 'd' is 1, the result is stored back in register 'f'.	
Cycle	1	
Example	SUBWF REG1, 1	B : REG1 = 0x03, W = 0x02, C = ?, Z = ? A : REG1 = 0x01, W = 0x02, C = 1, Z = 0
	SUBWF REG1, 1	B : REG1 = 0x02, W = 0x02, C = ?, Z = ? A : REG1 = 0x00, W = 0x02, C = 1, Z = 1
	SUBWF REG1, 1	B : REG1 = 0x01, W = 0x02, C = ?, Z = ? A : REG1 = 0xFF, W = 0x02, C = 0, Z = 0

SWAPF	Swap Nibbles in 'f'	
Syntax	SWAPF f [,d]	
Operands	f : 00h ~ 7Fh, d : 0, 1	
Operation	(destination,7~4) ← (f.3~0), (destination.3~0) ← (f.7~4)	
Status Affected	-	
OP-Code	00 1110 dfff ffff	
Description	The upper and lower nibbles of register 'f' are exchanged. If 'd' is 0, the result is placed in W register. If 'd' is 1, the result is placed in register 'f'.	
Cycle	1	
Example	SWAPF REG, 0	B : REG1 = 0xA5 A : REG1 = 0xA5, W = 0x5A

TESTZ	Test if 'f' is zero	
Syntax	TESTZ f	
Operands	f : 00h ~ 7Fh	
Operation	Set Z flag if (f) is 0	
Status Affected	Z	
OP-Code	00 1000 1fff ffff	
Description	If the content of register 'f' is 0, Zero flag is set to 1.	
Cycle	1	
Example	TESTZ REG1	B : REG1 = 0, Z = ? A : REG1 = 0, Z = 1

XORLW	Exclusive OR Literal with W	
Syntax	XORLW k	
Operands	k : 00h ~ FFh	
Operation	(W) ← (W) XOR k	
Status Affected	Z	
OP-Code	01 1101 kkkk kkkk	
Description	The contents of the W register are XOR'ed with the eight-bit literal 'k'. The result is placed in the W register.	
Cycle	1	
Example	XORLW 0xAF	B : W = 0xB5 A : W = 0x1A

XORWF
Exclusive OR W with 'f'

Syntax	XORWF f [,d]	
Operands	f : 00h ~ 7Fh, d : 0, 1	
Operation	(destination) ← (W) XOR (f)	
Status Affected	Z	
OP-Code	00 0110 dfff ffff	
Description	Exclusive OR the contents of the W register with register 'f'. If 'd' is 0, the result is stored in the W register. If 'd' is 1, the result is stored back in register 'f'.	
Cycle	1	
Example	XORWF REG, 1	B : REG = 0xAF, W = 0xB5 A : REG = 0x1A, W = 0xB5

ELECTRICAL CHARACTERISTICS

1. Absolute Maximum Ratings ($T_A=25^\circ\text{C}$)

Parameter	Rating	Unit
Supply voltage	$V_{SS} - 0.3$ to $V_{SS} + 5.5$	V
Input voltage	$V_{SS} - 0.3$ to $V_{DD} + 0.3$	
Output voltage	$V_{SS} - 0.3$ to $V_{DD} + 0.3$	
Output current high per 1 PIN	-25	mA
Output current high per all PIN	-80	
Output current low per 1 PIN	+30	
Output current low per all PIN	+150	
Maximum operating voltage	5.5	V
Operating temperature	-40 to +85	°C
Storage temperature	-65 to +150	

2. DC Characteristics ($T_A=25^\circ\text{C}$, $V_{DD}=1.3\text{V}$ to 5.5V)

Parameter	Symbol	Conditions	Min	Typ	Max	Unit
Operating Voltage	V_{DD}	FAST mode, 25°C , $F_{\text{sys}} = 4\text{ MHz}$	1.8	–	5.5	V
		FAST mode, 25°C , $F_{\text{sys}} = 2\text{ MHz}$	1.5	–	5.5	
		FAST mode, 25°C , $F_{\text{sys}} = 500\text{ KHz}$	1.3	–	5.5	
		SLOW mode, 25°C , SIRC	1.3	–	5.5	
Input High Voltage	V_{IH}	All Input	$V_{DD} = 5\text{V}$	$0.6V_{DD}$	–	V
			$V_{DD} = 3\text{V}$	$0.6V_{DD}$	–	
Input Low Voltage	V_{IL}	All Input	$V_{DD} = 5\text{V}$	–	$0.2V_{DD}$	V
			$V_{DD} = 3\text{V}$	–	$0.2V_{DD}$	
I/O Port Source Current	I_{OH}	PA0 ~ PA2	$V_{DD} = 5\text{V}$, $V_{OH} = 0.9V_{DD}$	6	12	mA
			$V_{DD} = 3\text{V}$, $V_{OH} = 0.9V_{DD}$	3	6	
		PA3, PA4	$V_{DD} = 5\text{V}$, $V_{OH} = 0.9V_{DD}$	10	20	
			$V_{DD} = 3\text{V}$, $V_{OH} = 0.9V_{DD}$	4	8	
I/O Port Sink Current	I_{OL}	PA0 ~ PA2	$V_{DD} = 5\text{V}$, $V_{OL} = 0.1V_{DD}$	24	48	mA
			$V_{DD} = 3\text{V}$, $V_{OL} = 0.1V_{DD}$	10	20	
		PA3, PA4	$V_{DD} = 5\text{V}$, $V_{OL} = 0.1V_{DD}$	38	76	
			$V_{DD} = 3\text{V}$, $V_{OL} = 0.1V_{DD}$	16	32	
		PA7	$V_{DD} = 5\text{V}$, $V_{OL} = 0.1V_{DD}$	14	28	
			$V_{DD} = 3\text{V}$, $V_{OL} = 0.1V_{DD}$	6	12	
Input Leakage Current (pin high)	I_{ILH}	All Input	$V_{IN} = V_{DD}$	–	–	μA
Input Leakage Current (pin low)	I_{ILL}	All Input	$V_{IN} = 0\text{V}$	–	–	

Parameter	Symbol	Conditions	Min	Typ	Max	Unit	
Supply Current	I _{DD}	FAST mode, LVR enable	V _{DD} =5V, FIRC=4MHz CPUPSC=10 (div2)	–	1.7	–	mA
			V _{DD} =3V, FIRC=4MHz CPUPSC=10 (div2)	–	1.1	–	
			V _{DD} =5V, FIRC=2MHz CPUPSC=01 (div4)	–	1.1	–	
			V _{DD} =3V, FIRC=2MHz CPUPSC=01 (div4)	–	0.7	–	
			V _{DD} =5V, FIRC=0.5MHz CPUPSC=00 (div16)	–	0.6	–	
			V _{DD} =3V, FIRC=0.5MHz CPUPSC=00 (div16)	–	0.4	–	
		SLOW mode, LVR enable	V _{DD} =5 V, SIRC, CPUPSC=11 (div1)	–	33	–	μA
			V _{DD} =3 V, SIRC, CPUPSC=11 (div1)	–	14	–	
			V _{DD} =5 V, SIRC, CPUPSC=10 (div2)	–	20	–	
			V _{DD} =3 V, SIRC, CPUPSC=10 (div2)	–	8	–	
			V _{DD} =5 V, SIRC, CPUPSC=01 (div4)	–	14	–	
			V _{DD} =3 V, SIRC, CPUPSC=01 (div4)	–	5	–	
	V _{DD} =5 V, SIRC, CPUPSC=00 (div16)		–	9	–		
	V _{DD} =3 V, SIRC, CPUPSC=00 (div16)		–	3	–		
	IDLE mode, LVR enable	V _{DD} =5 V, SIRC, CPUPSC=11	–	7.6	–	–	
		V _{DD} =3 V, SIRC, CPUPSC=11	–	2.3	–		
	IDLE mode, LVR disable	V _{DD} =5 V, SIRC, CPUPSC=11	–	5.4	–	–	
		V _{DD} =3 V, SIRC, CPUPSC=11	–	1.5	–		
	STOP mode, LVR enable	V _{DD} =5V	–	2.3	–	–	
		V _{DD} =3V	–	0.7	–		
	STOP mode, LVR disable	V _{DD} =5V	–	–	0.1	–	
		V _{DD} =3V	–	–	0.1		
	System Clock Frequency	F _{sys}	V _{DD} > LVR _{th}	V _{DD} =3.7V	–	–	4
V _{DD} =2.4V				–	–	4	
V _{DD} =1.7V				–	–	2	
LVR Reference Voltage	V _{LVR}	T _A =25°C	–	3.7	–	V	
			–	2.4	–		
			–	1.7	–		
LVR Hysteresis Voltage	V _{HYST}	T _A =25°C	–	±0.1	–	V	

Parameter	Symbol	Conditions	Min	Typ	Max	Unit	
Low Voltage Detection time	t_{LVR}	$T_A = 25^\circ\text{C}$	100	–	–	μs	
Pull-Up Resistor	R_P	$V_{IN} = 0\text{ V}$ Port A, except PA7	$V_{DD} = 5\text{ V}$	–	58	–	K Ω
			$V_{DD} = 3\text{ V}$		104		
		$V_{IN} = 0\text{ V}$ PA7	$V_{DD} = 5\text{ V}$	–	56	–	
			$V_{DD} = 3\text{ V}$		101		

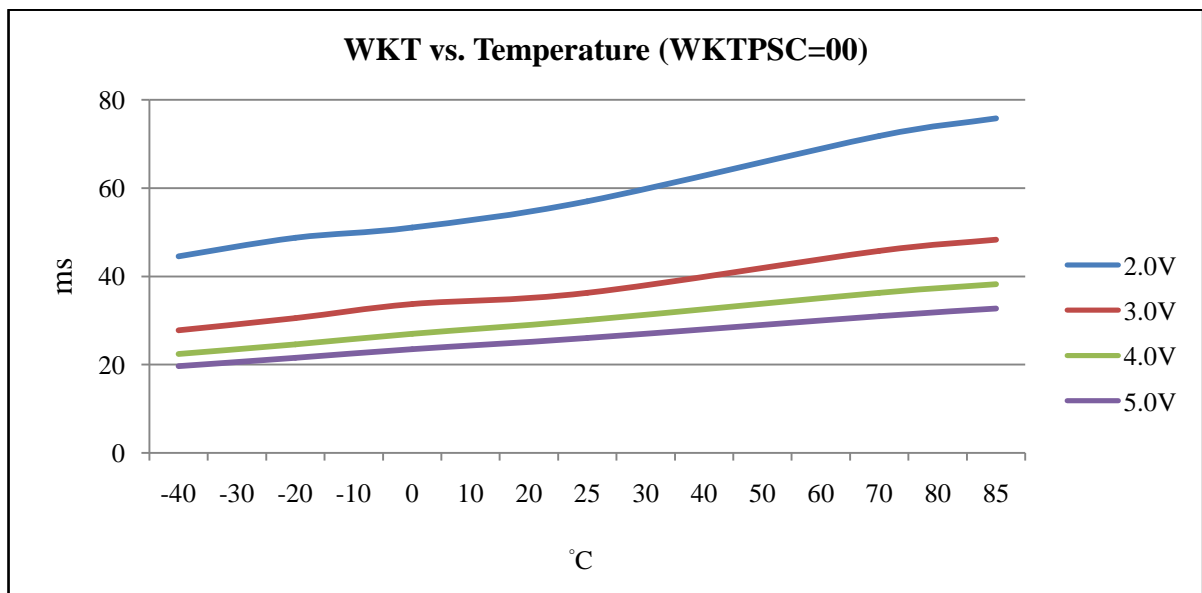
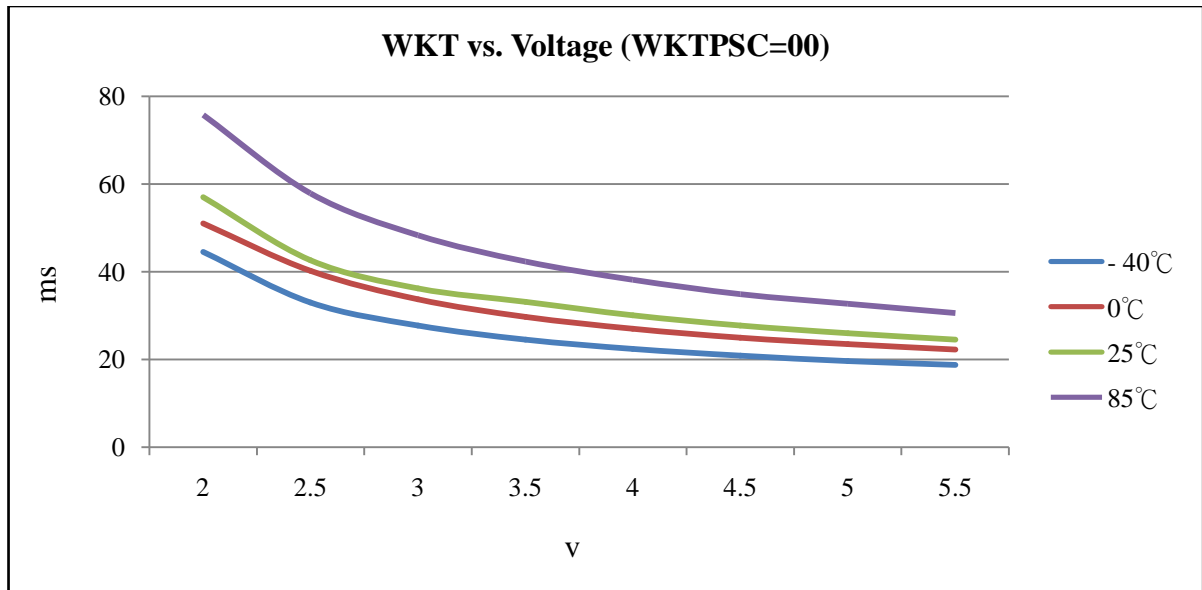
3. Clock Timing ($T_A = -40^\circ\text{C}$ to $+85^\circ\text{C}$)

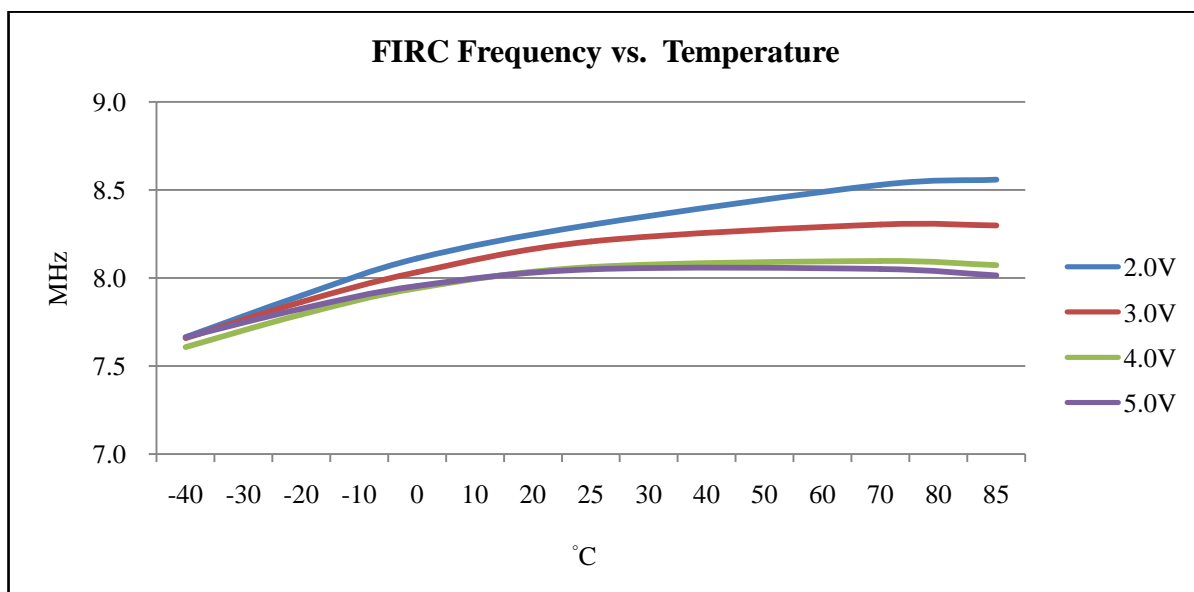
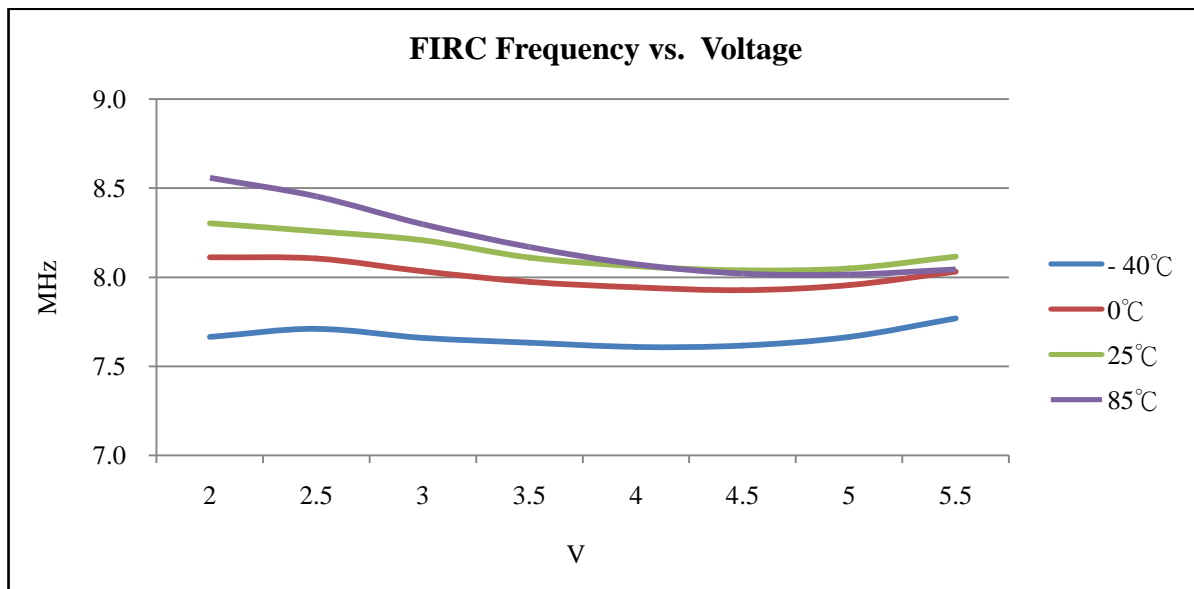
Parameter	Condition	Min	Typ	Max	Unit
Internal RC Frequency	25°C , $V_{DD} = 3.1 \sim 5.5\text{ V}$	7.75	8	8.25	MHz
	25°C , $V_{DD} = 2.0 \sim 3.0\text{ V}$	7.6	8	8.4	
	$-40^\circ\text{C} \sim 85^\circ\text{C}$, $V_{DD} = 2.5 \sim 5.5\text{ V}$	7.5	8	8.5	

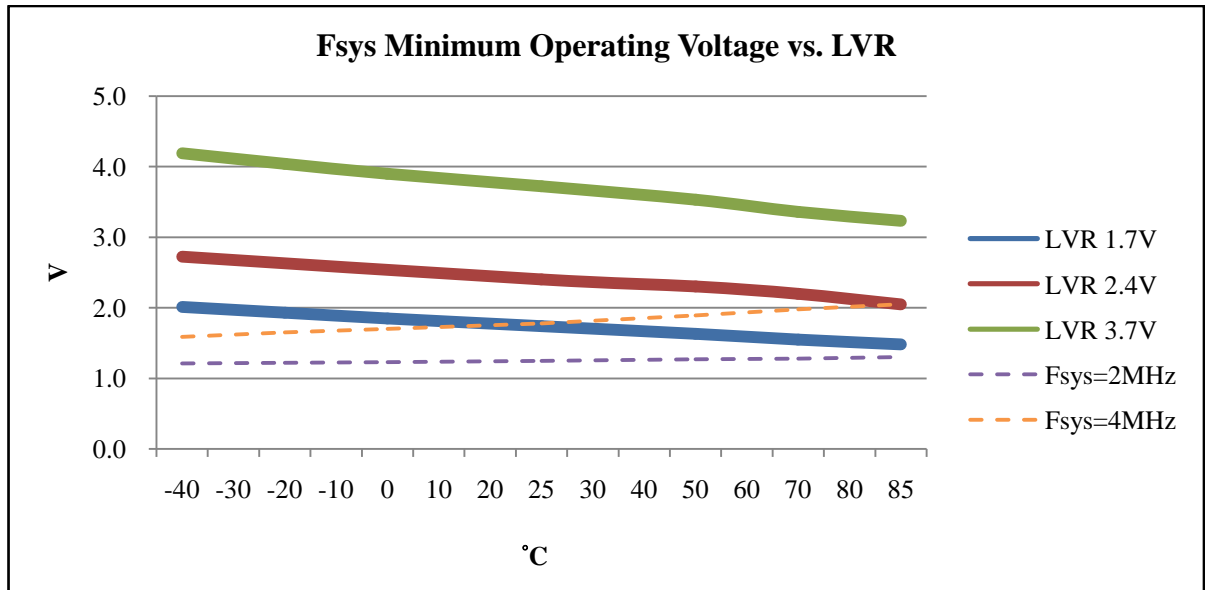
4. Reset Timing Characteristics ($T_A = -40^\circ\text{C}$ to $+85^\circ\text{C}$)

Parameter	Conditions	Min	Typ	Max	Unit
RESET Input Low width	Input $V_{DD} = 5\text{ V} \pm 10\%$	3	–	–	μs
WDT wakeup time	$V_{DD} = 5\text{ V}$, WDT $PSC=00$	–	52	–	ms
	$V_{DD} = 3\text{ V}$, WDT $PSC=00$	–	75	–	
WKT wakeup time	$V_{DD} = 5\text{ V}$, WKTP $SC=00$	–	26	–	ms
	$V_{DD} = 3\text{ V}$, WKTP $SC=00$	–	37.5	–	
CPU start up time	$V_{DD} = 5\text{ V}$	–	24	–	ms
	$V_{DD} = 3\text{ V}$	–	35	–	

5. Characteristic Graphs





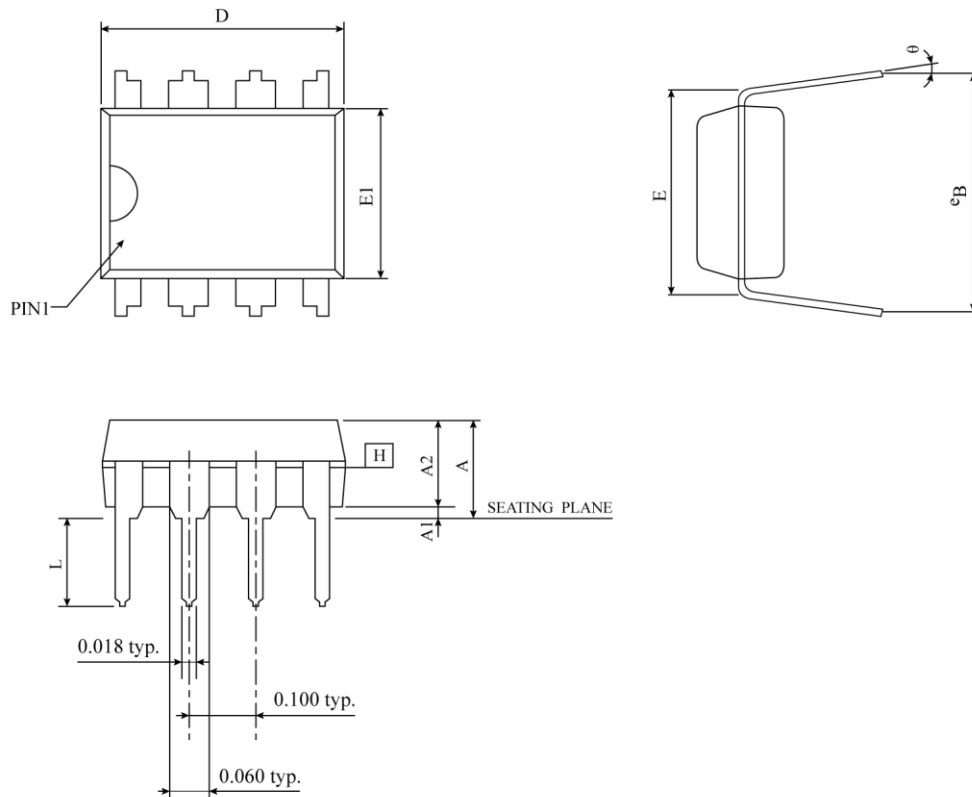


PS. Due to the variation of manufacturing process, this LVR will slightly vary between different chips.

ORDERING INFORMATION

The ordering information:

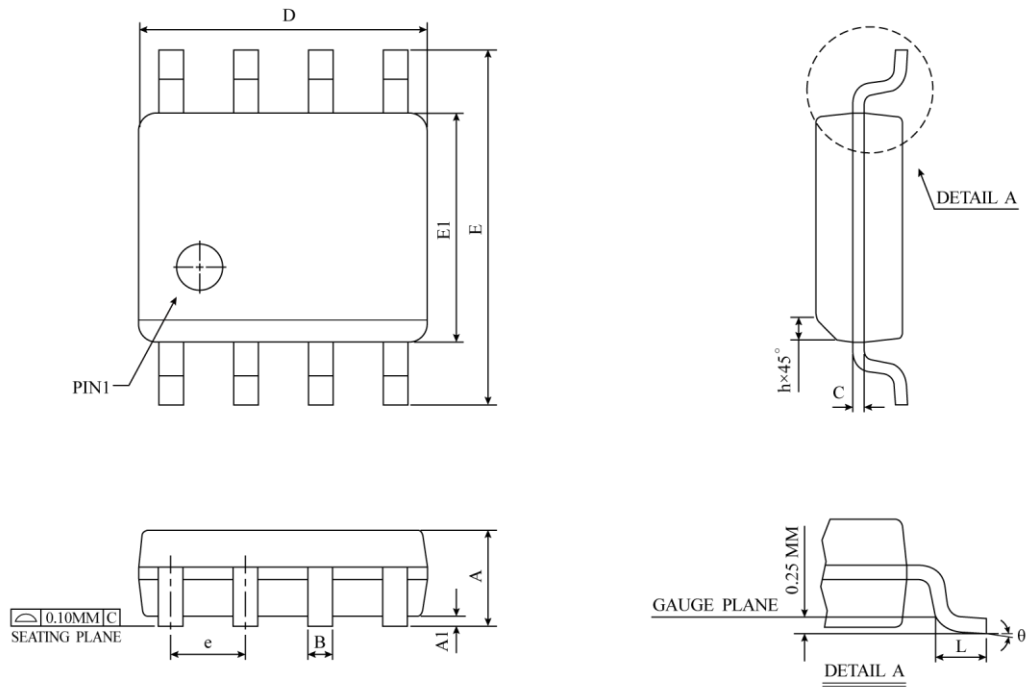
Ordering number	Package
TM57M5526C-MTP	Wafer/Dice blank chip
TM57M5526C-COD	Wafer/Dice with code
TM57M5526C-MTP-01	DIP-8 (300mil)
TM57M5526C-MTP-14	SOP-8 (150mil)
TM57M5526C-MTP-A8	SOT23-6
TM57M5536C- MTP	Wafer/Dice blank chip
TM57M5536C-COD	Wafer/Dice with code
TM57M5536C-MTP-01	DIP-8 (300mil)
TM57M5536C-MTP-14	SOP-8 (150mil)
TM57M5536C-MTP-A8	SOT23-6

DIP-8 (300mil) Package Dimension


SYMBOL	DIMENSION IN MM			DIMENSION IN INCH		
	MIN	NOM	MAX	MIN	NOM	MAX
A	-	-	5.334	-	-	0.210
A1	0.381	-	-	0.015	-	-
A2	3.175	3.302	3.429	0.125	0.130	0.135
D	9.017	9.586	10.160	0.355	0.378	0.400
E	7.620 BSC			0.300 BSC		
E1	6.223	6.350	6.477	0.245	0.250	0.255
L	2.921	3.366	3.810	0.115	0.133	0.150
eB	8.509	9.017	9.525	0.335	0.355	0.375
θ	0°	7.5°	15°	0°	7.5°	15°
JEDEC	MS-001 (BA)					

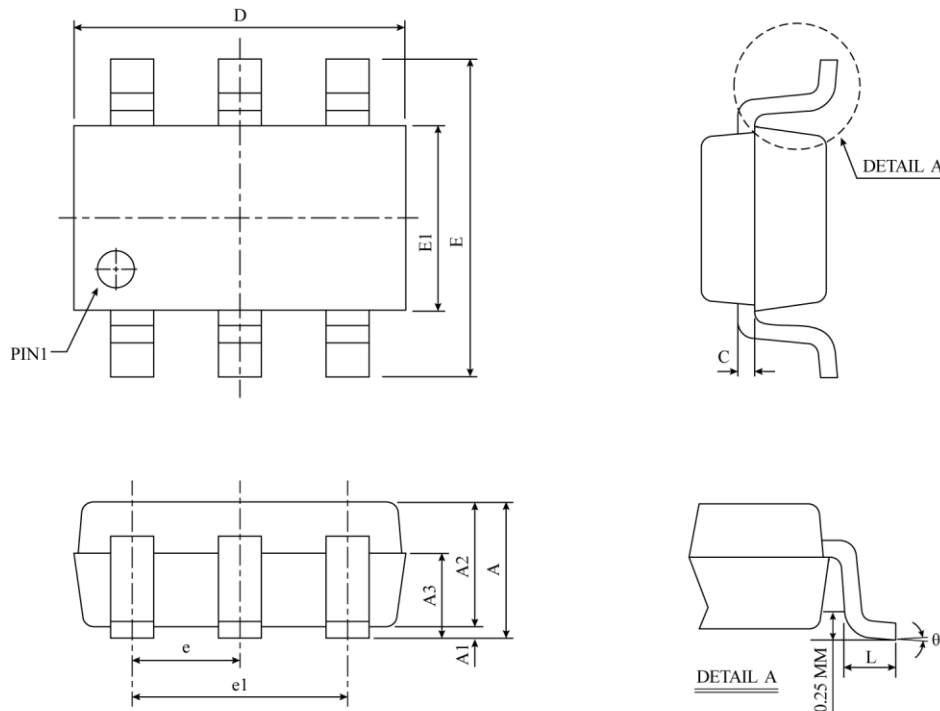
NOTES :

1. "D" , "E1" DIMENSIONS DO NOT INCLUDE MOLD FLASH OR PROTRUSIONS. MOLD FLASH OR PROTRUSIONS SHALL NOT EXCEED .010 INCH.
2. eB IS MEASURED AT THE LEAD TIPS WITH THE LEADS UNCONSTRAINED.
3. POINTED OR ROUNDED LEAD TIPS ARE PREFERRED TO EASE INSERTION.
4. DISTANCE BETWEEN LEADS INCLUDING DAM BAR PROTRUSIONS TO BE .005 INCH MINIMUM.
5. DATUM PLANE (H) COINCIDENT WITH THE BOTTOM OF LEAD, WHERE LEAD EXITS BODY.

SOP-8 (150mil) Package Dimension


SYMBOL	DIMENSION IN MM			DIMENSION IN INCH		
	MIN	NOM	MAX	MIN	NOM	MAX
A	1.35	1.55	1.75	0.0532	0.0610	0.0688
A1	0.10	0.18	0.25	0.0040	0.0069	0.0098
B	0.33	0.42	0.51	0.0130	0.0165	0.0200
C	0.19	0.22	0.25	0.0075	0.0087	0.0098
D	4.80	4.90	5.00	0.1890	0.1939	0.1988
E	5.80	6.00	6.20	0.2284	0.2362	0.2440
E1	3.80	3.90	4.00	0.1497	0.1536	0.1574
e	1.27 BSC			0.050 BSC		
h	0.25	0.38	0.50	0.0099	0.0148	0.0196
L	0.40	0.84	1.27	0.0160	0.0330	0.0500
θ	0°	4°	8°	0°	4°	8°
JEDEC	MS-012 (AA)					

△ *NOTES : DIMENSION "D" DOES NOT INCLUDE MOLD FLASH, PROTRUSIONS OR GATE BURRS.
MOLD FLASH, PROTRUSIONS AND GATE BURRS SHALL
NOT EXCEED 0.15 MM (0.006 INCH) PER SIDE.

SOT23-6 Package Dimension


SYMBOL	DIMENSION IN MM			DIMENSION IN INCH		
	MIN	NOM	MAX	MIN	NOM	MAX
A	-	-	1.45	-	-	0.057
A1	0	0.08	0.15	0	0.003	0.006
A2	0.90	1.10	1.30	0.035	0.043	0.051
A3	0.60	0.65	0.70	0.024	0.026	0.028
c	0.12	0.16	0.19	0.005	0.006	0.007
D	2.82	2.92	3.02	0.111	0.115	0.119
E	2.70	2.90	3.10	0.106	0.114	0.122
E1	1.52	1.62	1.72	0.060	0.064	0.068
e	0.85	0.95	1.05	0.033	0.037	0.041
e1	1.80	1.90	2.00	0.071	0.075	0.079
L	0.35	0.48	0.60	0.014	0.019	0.024
θ	0°	4°	8°	0°	4°	8°
JEDEC	M0-178 (AB)					

△ * NOTES : ALL DIMENSIONS REFER TO JEDEC STANDARD M0-178 AB
DO NOT INCLUDE MOLD FLASH OR PROTRUSIONS.