



十速

EV22_52XX_LCD AP

使用手册

Rev 0.90

tenx reserves the right to change or discontinue the manual and online documentation to this product herein to improve reliability, function or design without further notice. **tenx** does not assume any liability arising out of the application or use of any product or circuit described herein; neither does it convey any license under its patent rights nor the rights of others. **tenx** products are not designed, intended, or authorized for use in life support appliances, devices, or systems. If Buyer purchases or uses tenx products for any such unintended or unauthorized application, Buyer shall indemnify and hold tenx and its officers, employees, subsidiaries, affiliates and distributors harmless against all claims, cost, damages, and expenses, and reasonable attorney fees arising out of, directly or indirectly, any claim of personal injury or death associated with such unintended or unauthorized use even if such claim alleges that tenx was negligent regarding the design or manufacture of the part.

修改记录

版本	日期	说明
V0.90	Oct, 2015	New release.

目录

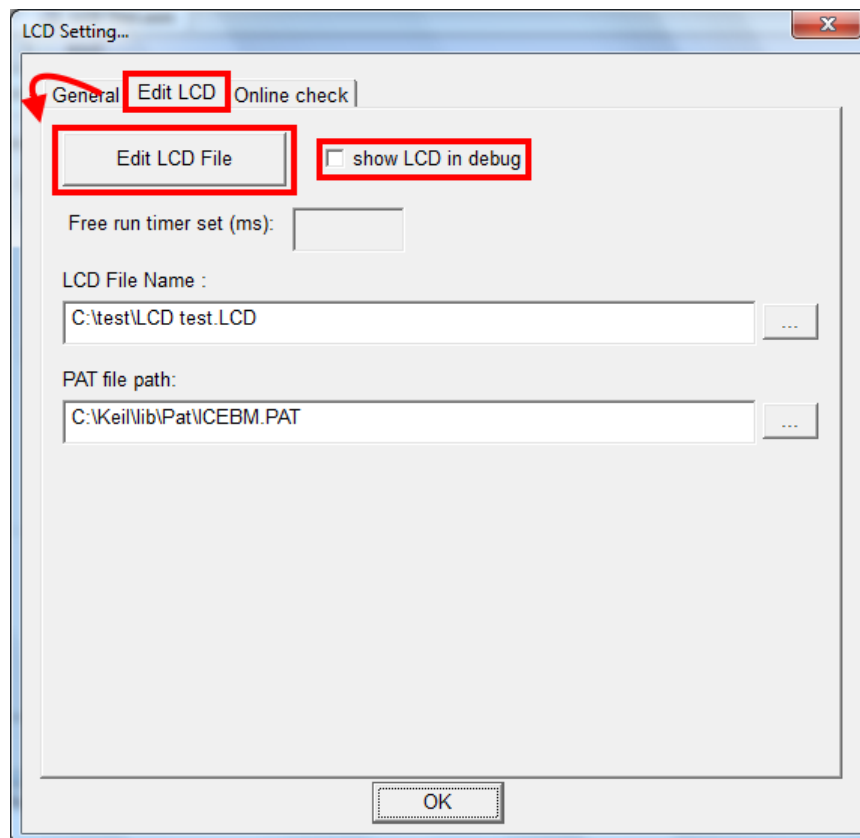
修改记录.....	2
1. 概述.....	4
2. LCD 介面使用说明.....	4
3. 如何将设定好的 LCD 正确显示	10

1. 概述

tenx F51&L51 系列通过 Keil 系列可安装 tenx 插件来仿真 LCD 的实际显示情况，本文将对 LCD AP 在 Keil 软件中的使用方式做简单介绍。

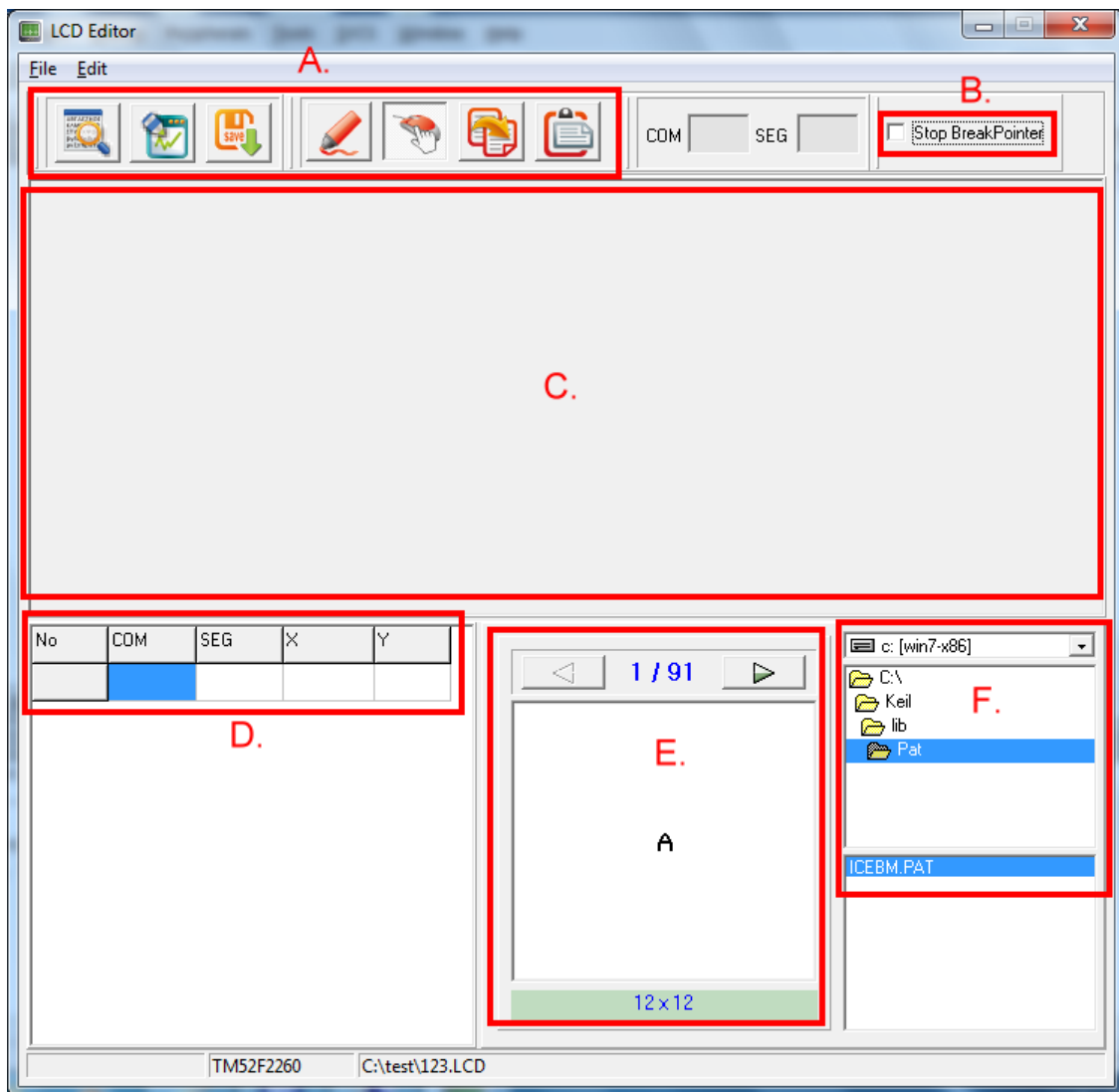
2. LCD 介面使用说明

2.1 点击 Options for Target → Utilities → Settings → Edit LCD → Edit LCD File 则会出现 LCD 编辑介面，show LCD in debug 若勾选则在进 debug 模式后显示出 LCD AP，而 LCD File Name 及 PAT file path 为*.LCD 及*.PAT 的默认路径。

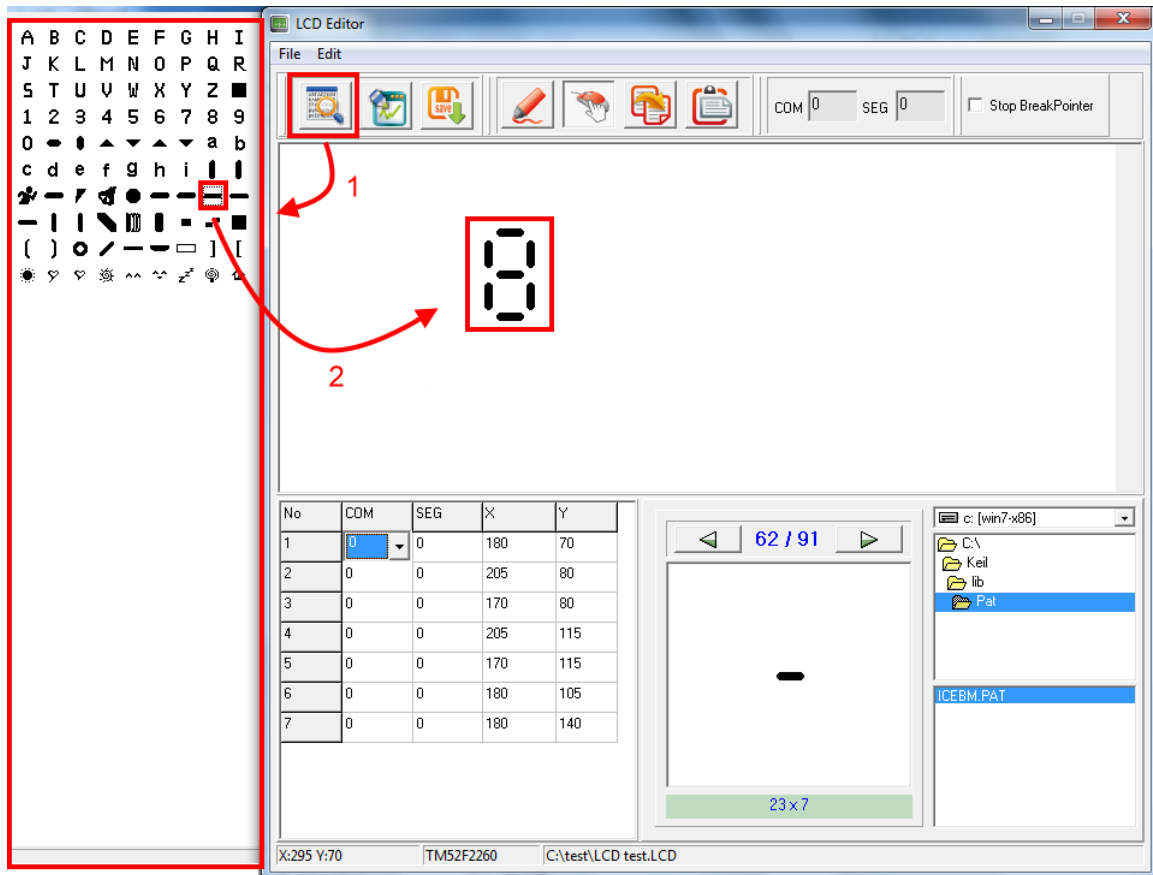


2.2 LCD 介面说明:

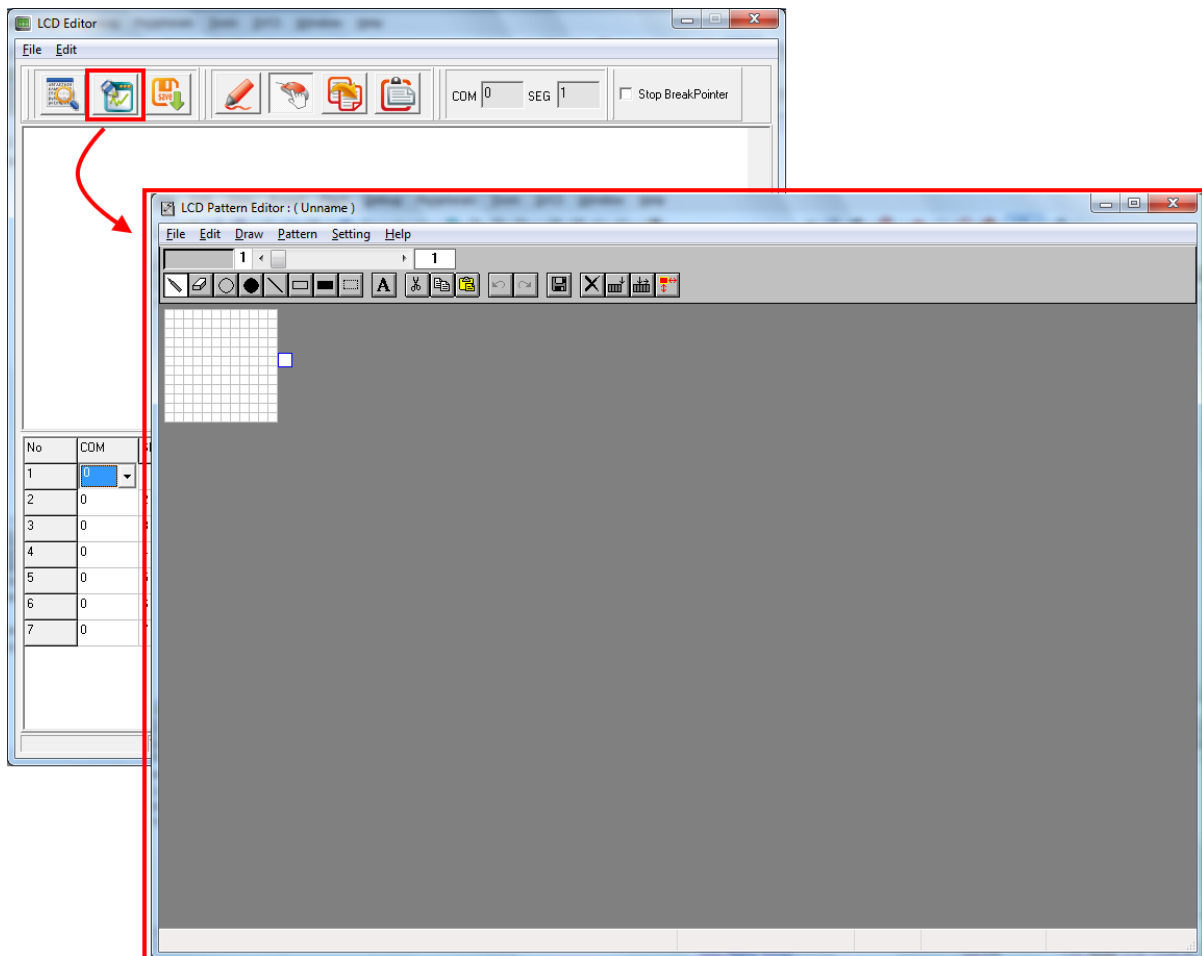
- A: 常用编辑键
- B: 程序是否停至断点, 勾选为停止, 未勾选为不停止
- C: 主显示窗口
- D: 选择 COM & SEG
- E: 物件选择图标
- F: 物件数据库路径



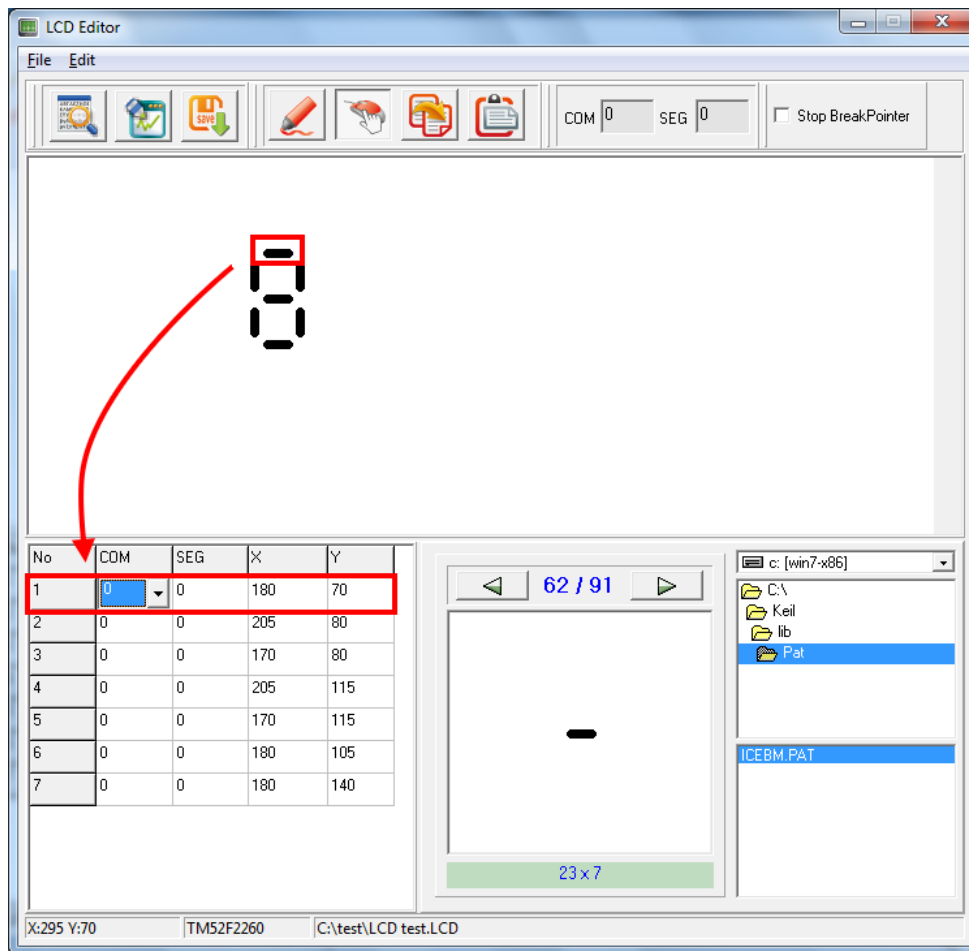
2.3 物件选择浏览：可使用拖曳 (Select Mode) 或点选方式 (Edit mode) 选择物件至主显示窗口。



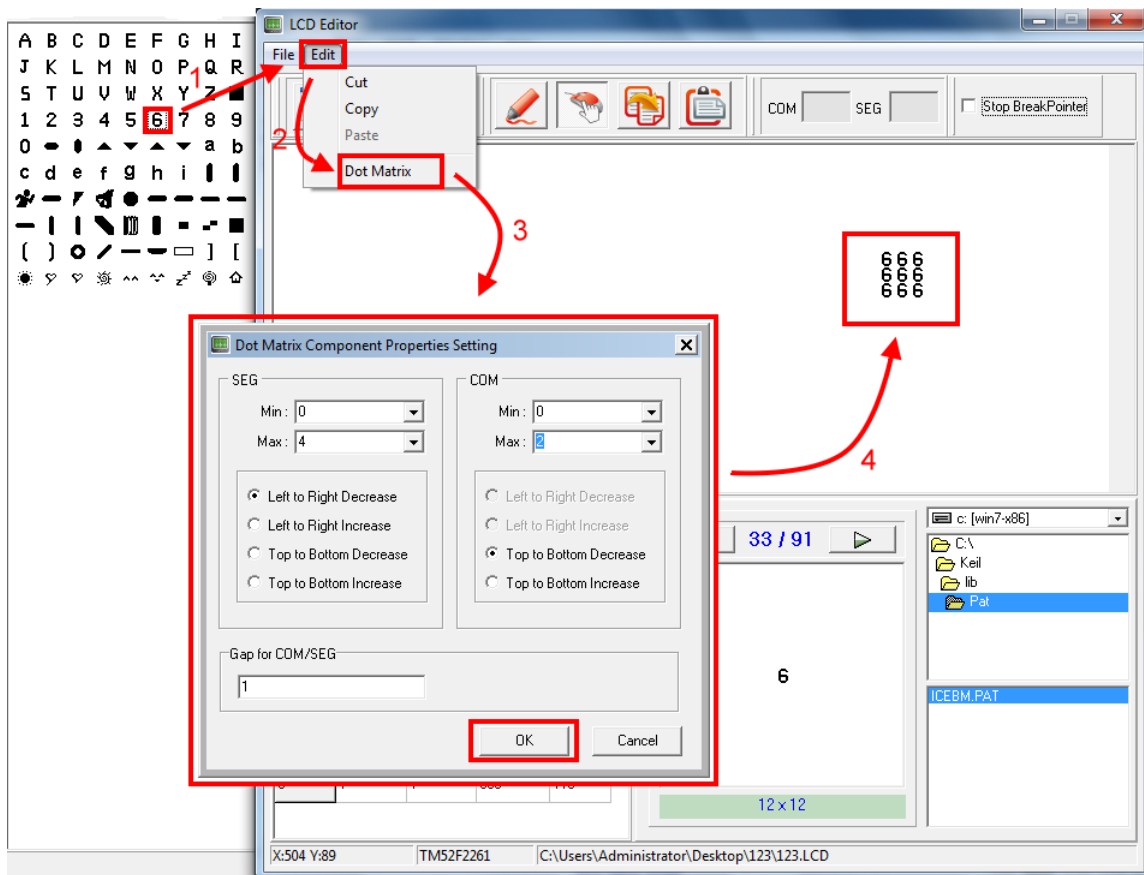
2.4 物件编辑：可自行任意绘制物件。



2.5 选择 COM & SEG: 点选一物件后, 再选择其对应的 COM & SEG。



2.6 点矩阵：点选一物件后，再选择点矩阵功能后输入所需数量。



3. 如何将设定好的 LCD 正确显示

在 DEBUG 模式下，首先将程序在写完 LCD DATA 后设一断点，再按 RUN (F5) 后即可观看 LCD AP，而需注意 Stop BreakPointer (程序是否停至断点)，勾选为程序执行后停至所设定断点，并显示其 LCD 情形；未勾选为程序执行后就算有设定断点也不停止，且 LCD 也会持续显示。

