



十速科技股份有限公司  
tenx technology inc.

**Advance  
Information**

---

# TP6614

## USB touchpad mouse with uTouch widget

### User Manual

**Tenx reserves the right to change or  
discontinue this product without notice.**

**tenx technology inc.**

---

# CONTENTS

PRODUCT NAME ..... 2

TP6614 ..... 2

USB touchpad mouse with uTouch Widget..... 2

1. Introduction to the product’s function..... 2

2. Introduction to the uTouch application software..... 2

3. Introduction for using the Touch Key hardware device with matching Widget software..... 3

    3.1 Open the hidden toolbar or execute or stop the Widget application software..... 4

    3.2 The right sliding feature ..... 5

    3.3 The left sliding feature..... 6

4. Widget software set up and editing functions ..... 7

    4.1 Add Widget..... 7

        4.1.1 Three sources for adding Widget types:..... 8

            1. Open Application ..... 8

            2. Open iGoogle Widget..... 9

            3. Widgets on other websites..... 10

        4.1.2 The content of Icon File..... 10

        4.1.3 Set up the Title, Name, and window size for Widget..... 11

        4.1.4 The execution path for Widget code and PC widgets ..... 11

    4.2 Widget Management..... 12

    4.3 Widget Dockside ..... 12

    4.4 Settings..... 13

**PRODUCT NAME**

**TP6614**

**TITLE**

**USB touchpad mouse with uTouch Widget**

**1. Introduction to the product’s function**

This product is a USB capacitive touchpad mouse with matching Widget software applications, to which Google and software gadgets shared on the Internet can be added at will. These Widget software applications can be edited and saved into personalized toolbar to facilitate quick launch.

**2. Introduction to the uTouch application software**

When connecting to the USB device for the first time, please install the AP application software first. After installation, please click on the uTouch.exe file icon on the Desktop and the hidden toolbar will show up. Click on the touch area twice in a row to open the Widget software toolbar as shown in Figure 1: (please refer to Section 3-1 for details):

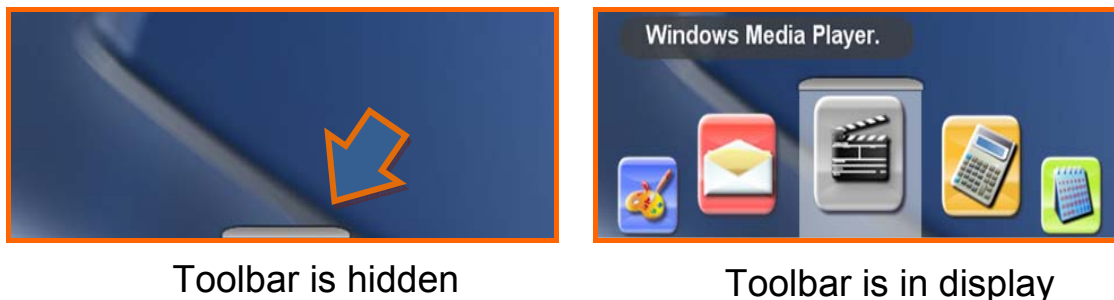


Figure1. Diagram to show and hide the toolbar

There are ten basic default functions on the planning toolbar in the hidden popup for the USB uTouch Widget application: Notepad, Timer clock, weather forecasts, computer, RSS webpage clip, Windows Media Player, system monitor, tape recorder, Photo viewer, etc. Users can configure and edit more gadgets using function of the uTouch Widget application software and select the desired gadgets through pressing and sliding on the touch control panel. Click on the touch sensing area twice in a row to invoke the program; in addition, the application on the touchpad mouse is supported as well. Please refer to Section 4-1 Add

Widget on how to add new widgets. If changing GUI interface is required, please refer to Section 4-4 Settings. ◦

### 3. Introduction for using the Touch Key hardware device with matching Widget software

The two-button Touch Key sensing area is shown as the red area in Figure 2, the blue area is the touch-pad mouse :

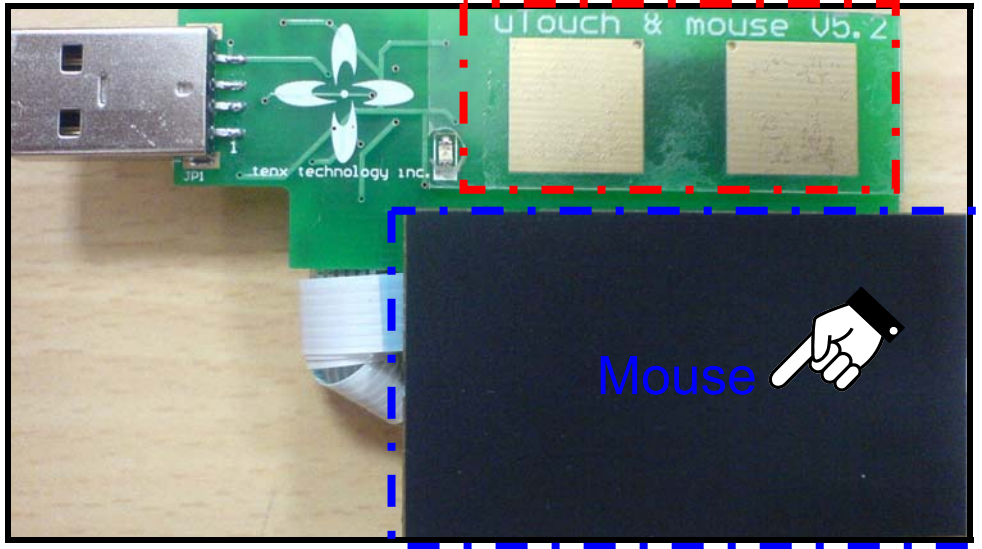


Figure 2. The two-button touch sensing area and the touchpad sensing area

### 3.1 Open the hidden toolbar or execute or stop the Widget application software

The user can use one of the following buttons to select any touch area and click twice in a row as shown in figure 3; the Widget software will recognize those as indication to open the hidden toolbar or execute or stop the Widget application software as shown in Figure 4.

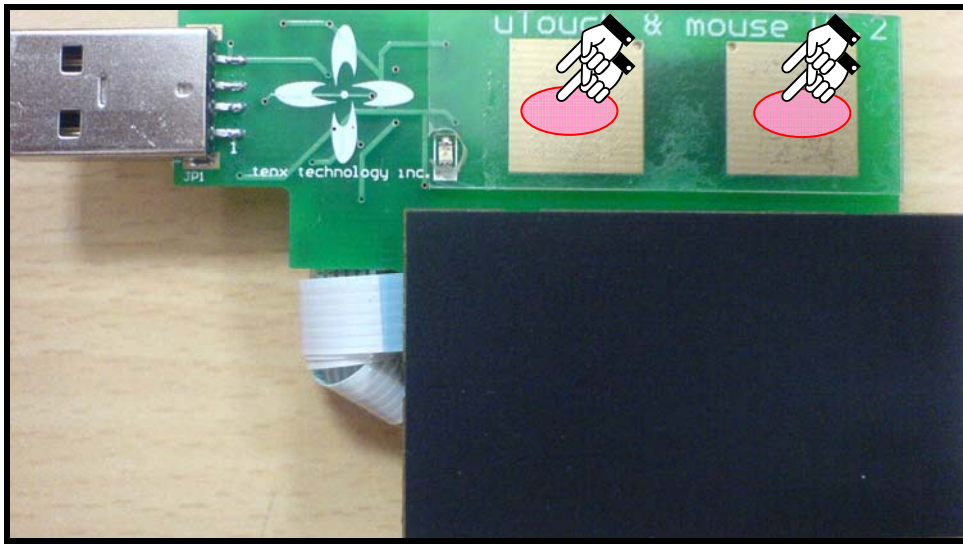
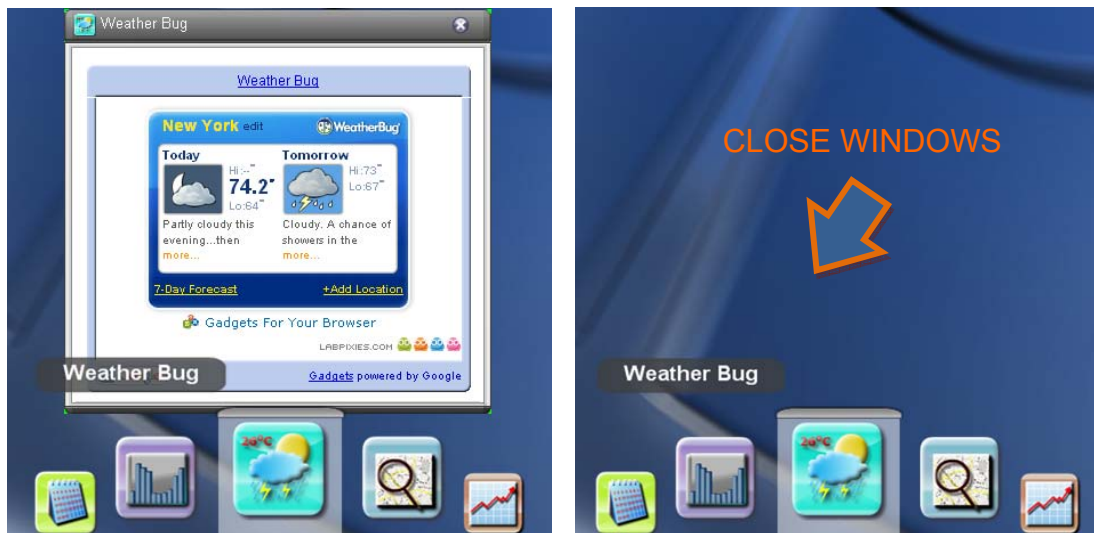


Figure 3. Diagram for clicking on any area twice in a row



Open the Widget application software

Stop the Widget application software

Figure 4. Open or stop the selected tool

### 3.2 The right sliding feature

When the user touches the central sensing area for 0.5 to 1 second first, then leaves the sensing area, the icon on the Widget application software will move to the right as shown in Figure 5.

If the user holds and touches the right sensing area continuously without moving, the Widget application software will move to the right in rotation until the user's finger leaves the sensing area.

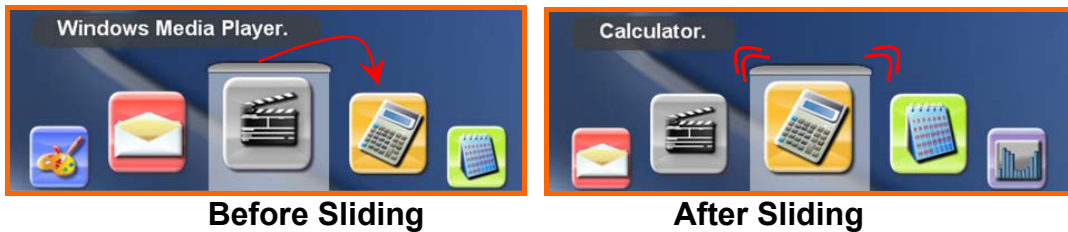
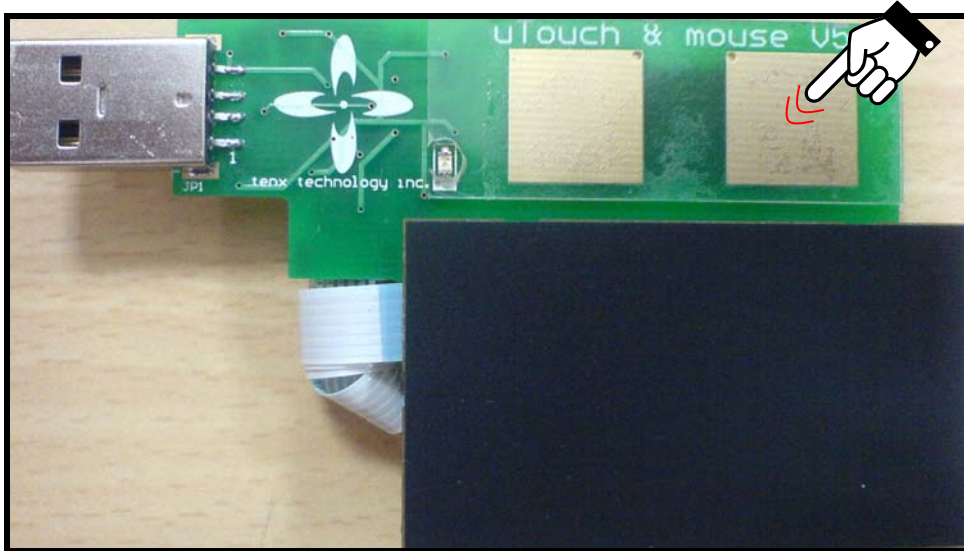
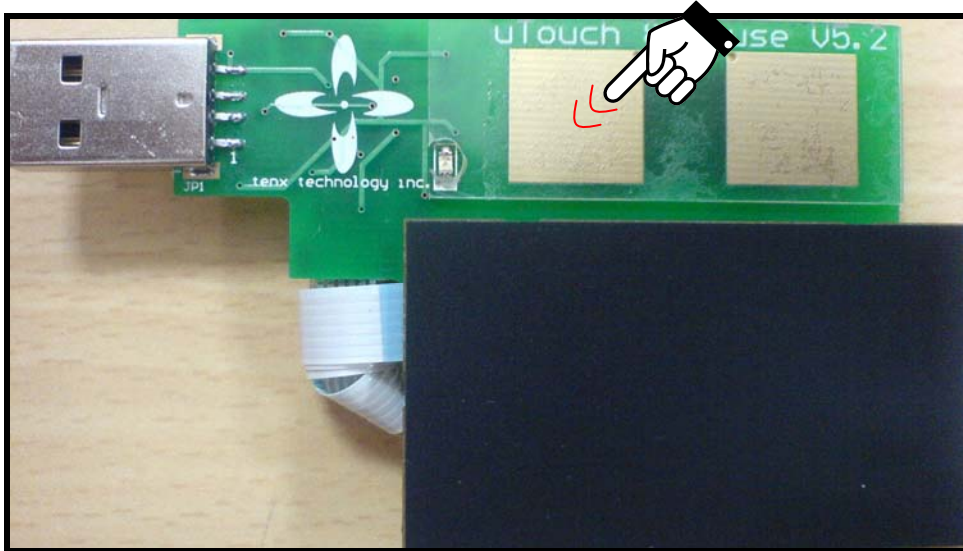


Figure 5. Select the moving tools to the right

### 3.3 The left sliding feature

When the user touches the central sensing area for 0.5 to 1 second first, then leaves the sensing area, the icon on the Widget application software will move to the left as shown in Figure 6.

If the user holds and touches the left sensing area continuously without moving, the Widget application software will move to the left in rotation until the user's finger leaves the sensing area.



Before Sliding



After Sliding

Figure 6. Select the moving tools to the left.

### 4. Widget software set up and editing functions

Right click the mouse button on the uTouch Widget icon on the Toolbar in the lower right corner of computer operating system, and selection items related to editing will show up for the user to perform function setup as shown in the following figure :

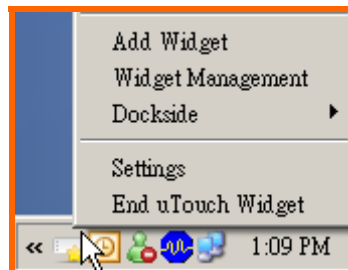


Figure 7. uTouch Widget Add and Set up new window

#### 4.1 Add Widget

The function for this menu is to provide a way for the user to add new Widget tools. A window interface will open after clicking on this function. There are four main areas, which are Widget type, Icon File, Widget Name, and Font size respectively. The fields in the code are shown in Figure 8.

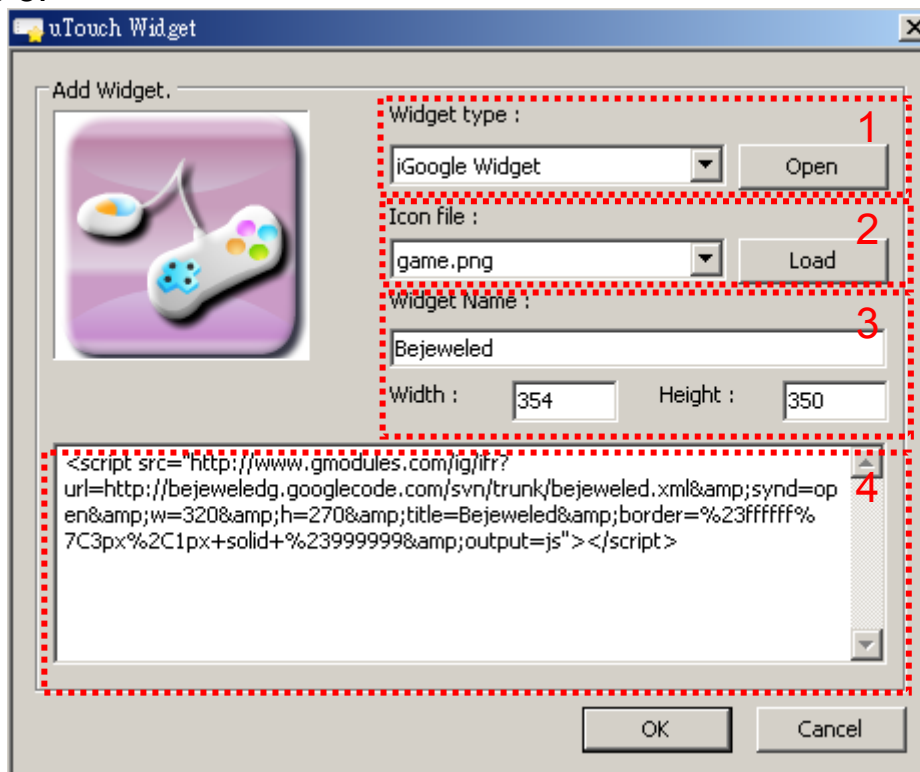


Figure 8. Window for adding new Widget tools

### 4.1.1 Three sources for adding Widget types:

The applications in the computer operating system, iGoogle Widget, and Widgets on other websites respectively are shown in Figure 9. Please select one of the tool source types, and then click on the open key to add.

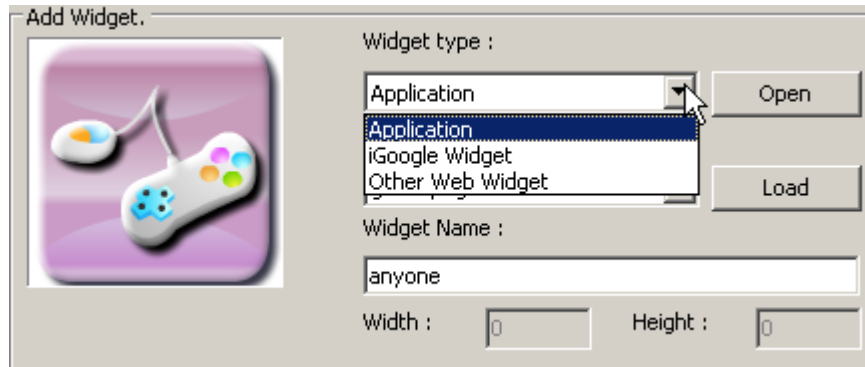


Figure 9. The tool source type

#### 1. Open Application

When adding to toolbar from applications in the computer operating system, an open window will show up. The executable file for the Widget must be selected as shown in Figure 10.

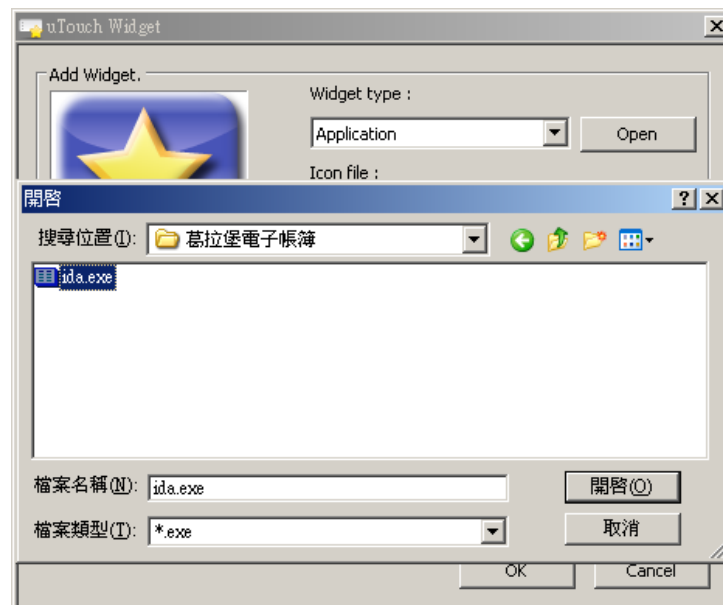


Figure 10. Select the tool executable file in computer

## 2. Open iGoogle Widget

When adding to toolbar from iGoogle Internet Widget, an interface browsing window will show up and connect to the Google webpage as shown in Figure 11.

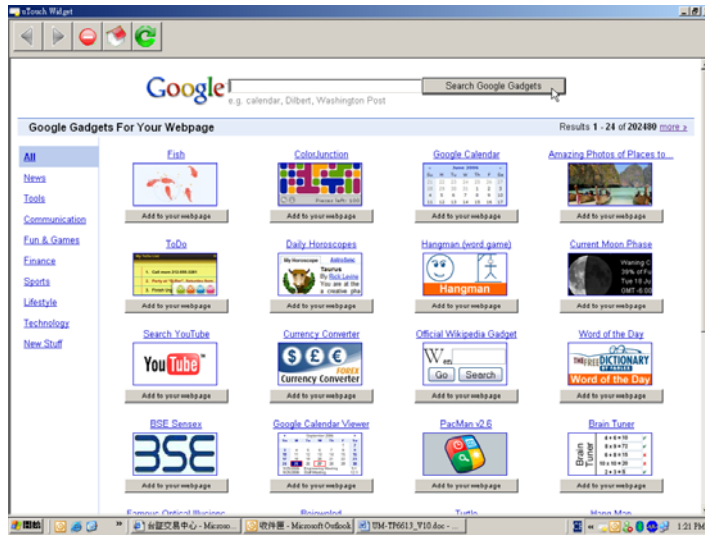


Figure 11 iGoogle Widget will connect to the Google webpage

Select desired Widgets and press the “Get Code” button, the system will automatically paste the code on the network to the code field of uTouch Widget as shown in Figure 12 and set up options related to these images. Then, click on OK to finishing adding.

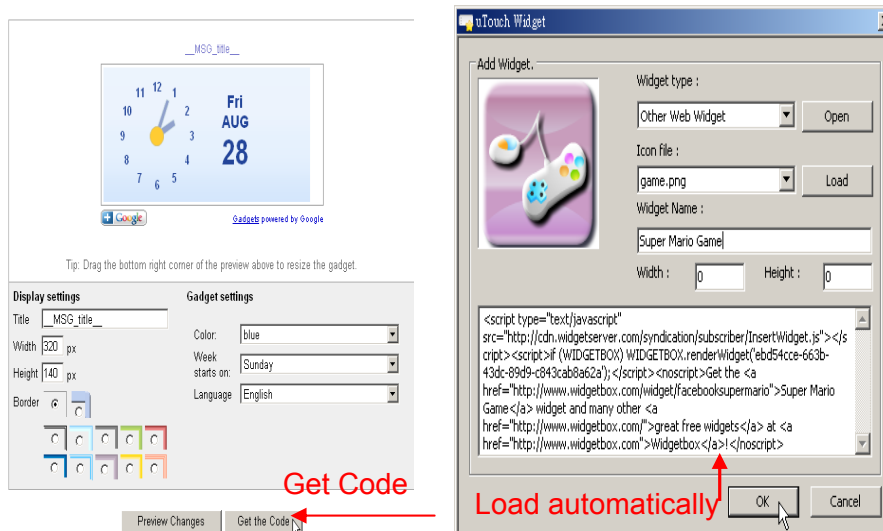


Figure.12 Get Code for Google Widget

### 3. Widgets on other websites

The user can browse and look for Widget programs s/he likes on Internet. The user only needs to copy ~ to the uTouch Widget code field manually as shown in Figure 13 and set up options related to these images to add.

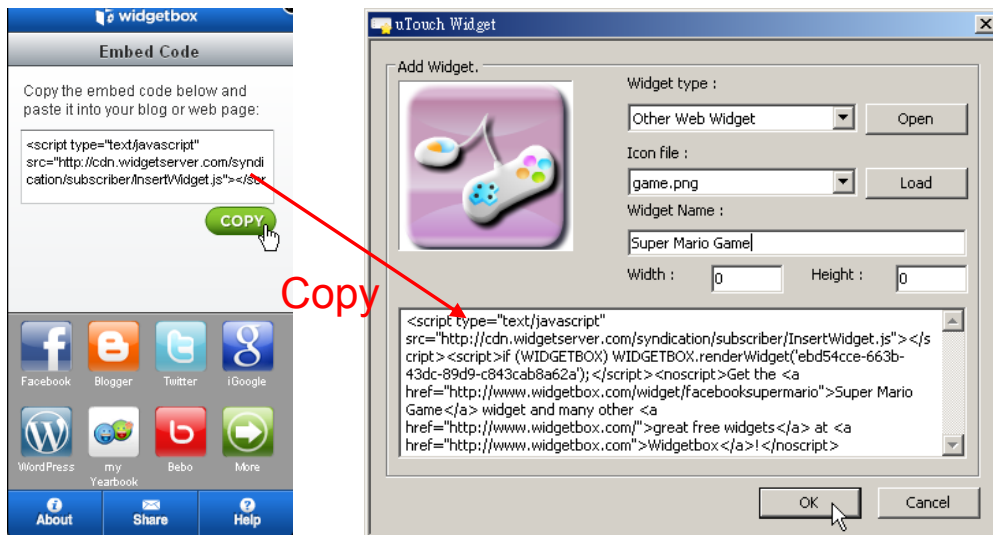


Figure 13. Manually install Widget tools

#### 4.1.2 The content of Icon File

Click on the default Icons directly or add the desired icons using Load function, but the file format has to be .png as shown in Figure 14.

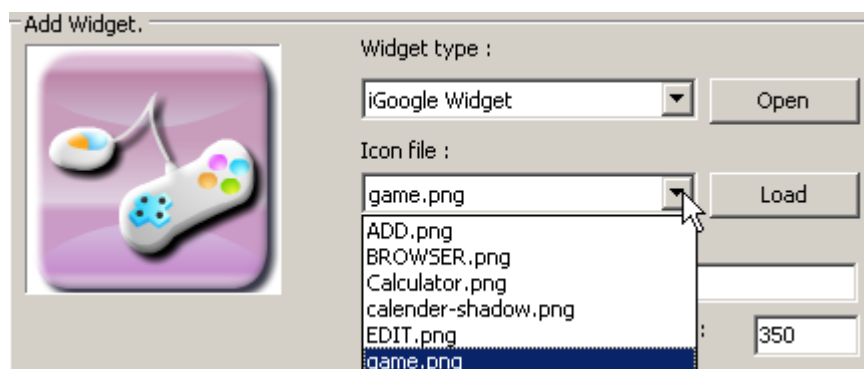


Figure.14 Icon File selection

### 4.1.3 Set up the Title, Name, and window size for Widget

The user can edit the text on the Widget toolbar and set the window size once tools are opens as shown in Figure 15.

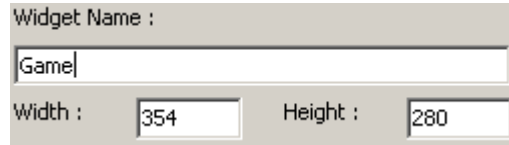
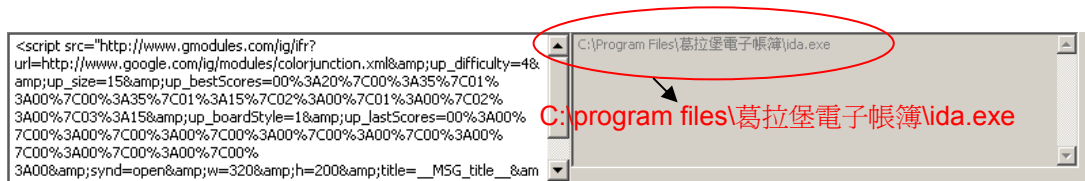


Figure 15. The setup fields for setting title and the window size

### 4.1.4 The execution path for Widget code and PC widgets

When the user downloads the Google web widgets, the code (or path) will be displayed in the field. If the user adds new widgets to the computer, the connection path will be displayed in the field as shown in Figure 16.



Web widget code

The connection path for the computer software

Figure 16. Web widget code and the execution path for the computer software

### 4.2 Widget Management

This is mainly to facilitate the user to manage and edit Widget as shown in Figure 17. It can be used to edit exiting widgets, add new widgets, delete unwanted widgets, and set up Widget functions.

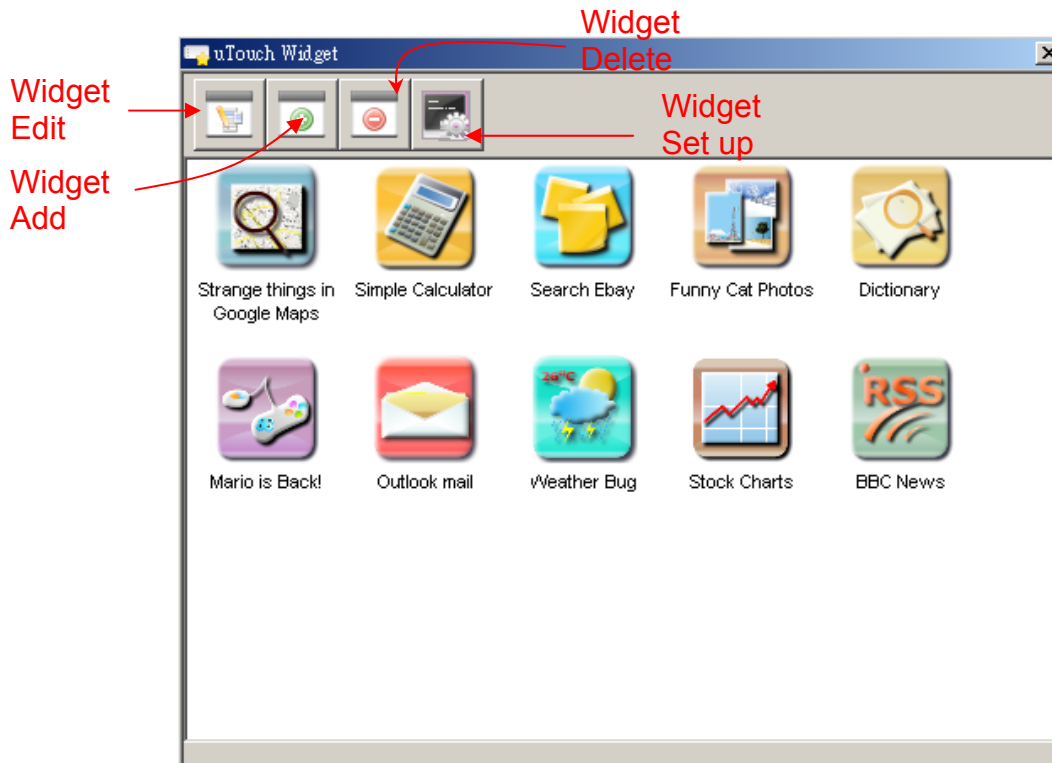


Figure.17 Widget management interface

### 4.3 Widget Dockside

This function is used to provide the user a way to set up the show-up location for the toolbar; it provides up, down, left, right directions to choose from as shown in Figure 18.

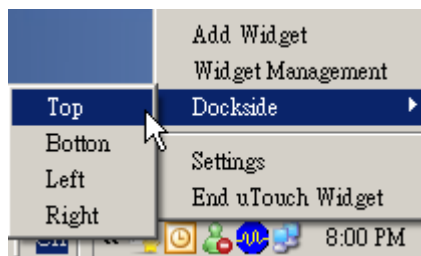


Figure 18. Setting the show-up location for the toolbar

### 4.4 Settings

This uTouch Widget Settings function allows the user to set the toolbar rotation speed, toolbar icons size, touch device sensitivity, toolbar rotation direction, and the interface language as shown in Figure 15. After setting up, please close the Widget application software by right clicking the mouse on the Widget icon on the Toolbar in the lower right corner of the computer operating system and select End uTouch Widget , then restart uTouch Widget to finish setup.

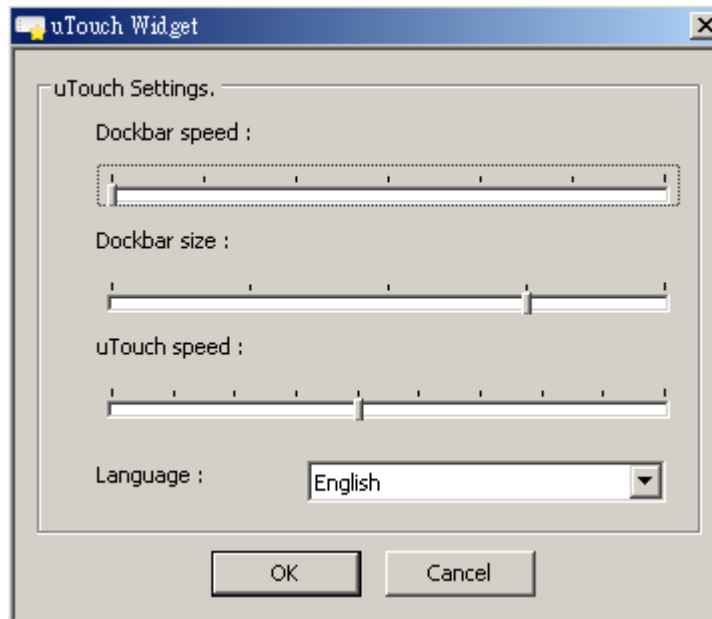


Figure.19 Widget set up