



# TP6820

## Photo Display

## Application Note

**Tenx reserves the right to change or  
discontinue this product without notice.**

**tenx technology inc.**

# CONTENTS

**PRODUCT NAME** ..... 3

**TITLE** ..... 3

**TP6820 Photo Display Function Definition** ..... 3

**APPLICATION NOTE** ..... 3

**1. Function Introduction**..... 3


    1.1 LCD Display Function Introduction ..... 3


    1.2 Hardware Function Introduction ..... 4


    1.3 Software Function Introduction..... 4


    1.4 Software Support Function Introduction ..... 4

**2. Image Viewer Application Introduction**..... 5

    2.1 Repeat a slide show  ..... 5

    2.2 Device Settings  ..... 5

    2.3 Format Device  ..... 6

    2.4 Shuffle/Repeat the unsaved pictures  ..... 6

    2.5 Browsing image files on the device ..... 6

    2.6 Preview ..... 6

**3. Editor Writer Application Introduction**..... 7

    3.1 Choose Module and Flash Size ..... 7

    3.2 Fill out PID/VID and product name..... 7

    3.3 Auto Run files import..... 7

    3.4 The picture import ..... 7

    3.5 Device Settings ..... 8

**4. Hardware Electric Circuit Notes** ..... 8

    4.1 DM, DP resistance capacitance value ..... 8

    4.2 Application Circuit ..... 9

**PRODUCT NAME**

TP6820

**TITLE**

TP6820 Photo Display Function Definition

**APPLICATION NOTE**

**1. Function Introduction**

**1.1 LCD Display Function Introduction**








- (1) Uses TFT-LCD Display with 240-RGB \* 320-DOT specification.
- (2) 16 photos slide show and multiple-picture preview.
- (3) Calendar, Date and Time Display.
- (4) Remaining Battery Level Display and Low Battery Life indicator.
- (5) 7 interface function items Display.



**1.2 Hardware Function Introduction**

- (1) 3 buttons control – Next, Mode and Previous.
- (2) Supports 128 MBytes NAND Flash memories.
- (3) Supports FM Radio.

**1.3 Software Function Introduction**

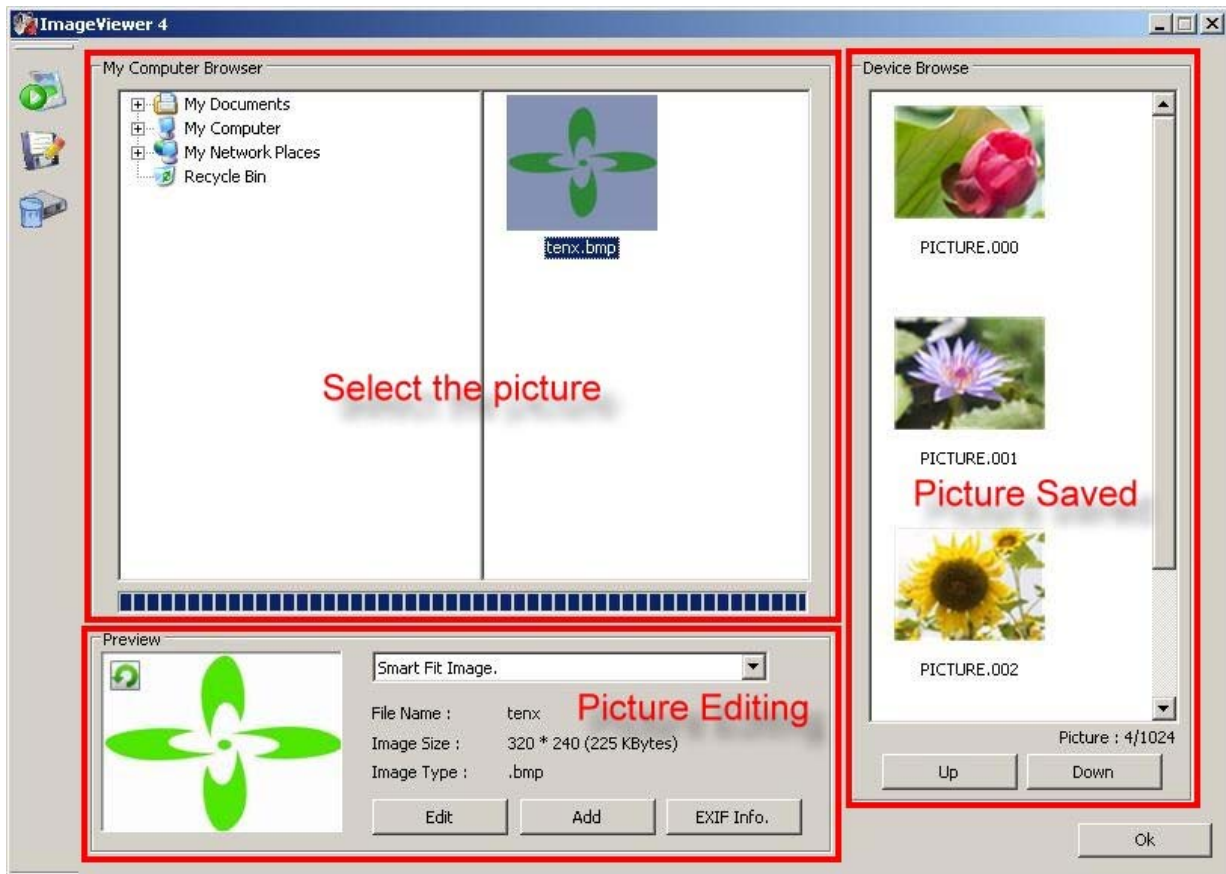
- (1) Displays 16 miniaturized pictures  Delete pictures 
- (2) Display the pictures and set the slideshow transition time interval 
- (3) Power-save mode settings and backlight brightness adjustment. 
- (4) Displays Calendar/Time 
- (5) FM Radio function settings 
- (6) Turn Off Option 

**1.4 Software Support Function Introduction**

- (1) Allows editing image files and changing the display order.
- (2) Allows editing background color and font color.
- (3) Display settings and Play mode settings.
- (4) Automatic Time/ Date update when connecting to USB port.
- (5) Various Image file Formats Supported such as BMP, JPG, GIF, etc...

## 2. Image Viewer Application Introduction

The AP application will launch automatically when connecting to USB port. No additional installation is needed. It is free of installation as shown in the figure below :



Note: For more details on function and instruction, please refer to TP6820 User Manual

### 2.1 Repeat a slide show

The time interval for displaying each image in the slide show can be configured and set to repeat.

### 2.2 Device Settings

Allows setting foreground color, background color, and power save mode during standby time, the shuffle time, adjust the backlight brightness, multi-language input ..., etc.

- (1) **Foreground Color** : The User can choose the text color, in addition to the basic color; the other color also can be defined.

- (2) **Background color** : The User can choose the background color, in addition to the basic color; the other color also can be defined.
- (3) **Power Save Mode and Shut Down** : The user can set the time to enter a shutdown status from 0 to 30 minutes (0 indicates no access to the shutdown mode)
- (4) **Shuffle/Repeat Play Settings** : The user can select the time interval for displaying each image from 0 to 31 seconds in the slide show.(Selecting 0 will turn the repeat mode off)
- (5) **Background Brightness Adjustment** : Allows adjusting the level of brightness on a scale of 0 to 7. (0 is the darkest, 7 is the brightest.)
- (6) **Multi-Language** : In addition to the default – English, it also allows importing other languages.



### 2.3 Format Device

Deletes all the saved image files.



### 2.4 Shuffle/Repeat the unsaved pictures

Repeat playing unsaved picture in hard disk.

### 2.5 Browsing image files on the device

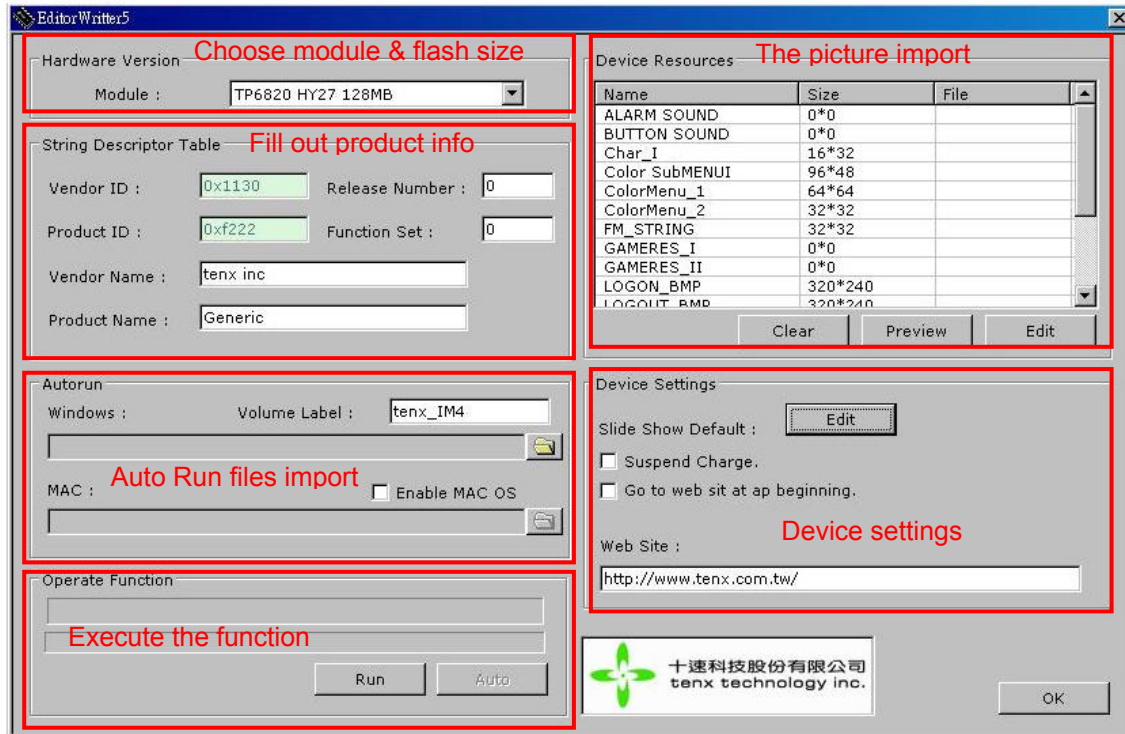
Allows moving the designated pictures up and down.

### 2.6 Preview

Preview the designated images or to add, edit the designated images.

- (1) **Add** : Add the selected images on the device.
- (2) **Edit** : Allows rotating the selected image 90 degrees to left or to the right, Flip Horizontal, Flip Vertical, and Pictures zoom in and zoom out.

### 3. Editor Writer Application Introduction



For more details on function and instruction, please refer to TP6820 User Manual.

#### 3.1 Choose Module and Flash Size

Choose the appropriate module and Flash size.

#### 3.2 Fill out PID/VID and product name

Fill out PID/VID, manufacturer name, product name, etc...

#### 3.3 Auto Run files import

After the module and flash size are chosen, the Auto Run files will be imported automatically. Image Viewer will be executed automatically when connects to USB port.

#### 3.4 The picture import

After the module and flash size are chosen, the picture will be imported automatically.

### 3.5 Device Settings

Allows setting the background brightness/color, standby time, the Slide Show time interval, etc...

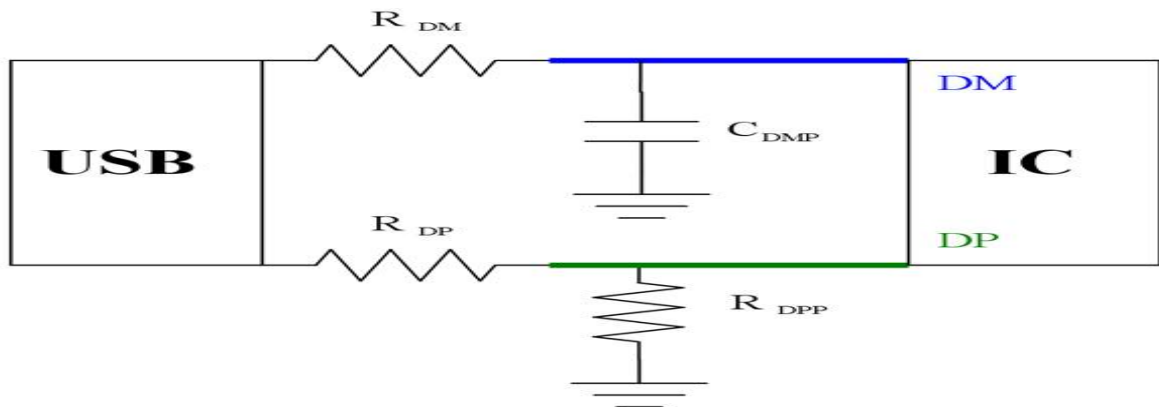
#### (1) Suspend Charge

This option is to select whether the battery is charged when it is in Standby mode; enable this option to charge battery during Standby mode, and disable this option not to charge the battery during Standby mode.

Note: Please note, do not enable the Suspend Charge option if need to pass USB-IF current test standard

## 4. Hardware Electric Circuit Notes

### 4.1 DM, DP ( R,C Value )



RDM	CDMP	RDP	RDPP
33 Ω	47pF	22 Ω	1M Ω

Note: Please use DM, DP resistance capacitance value mentioned above, otherwise, it may cause external PCI card can't be identified.

4.2 Application Circuit

