



十速科技股份有限公司
tenx technology inc.

AP-TP6820_01E
(Preliminary)

TP6820

Photo Display

Application Note

**Tenx reserves the right to change or
discontinue this product without notice.**

tenx technology inc.


INDEX


PRODUCT NAME 2
 TP6820 2


APPLICATION NOTE..... 2

1. Function Introduction 2
 1.1 LCD Display Function Introduction 2
 1.2 Hardware Function 3
 1.3 Software Function 3
 1.4 Software Support Function 4

2. Image Viewer Application 4

2.1 Repeat a slide show  5

2.2 Device Settings  5

2.3 Format Device  6

2.4 Browsing image files on the device 6

2.5 Preview 6

3. Editor Writer Application Introduction..... 7
 3.1 Select the Flash Memory Size..... 7
 3.2 Fill out the Product Data..... 7
 3.3 Auto Run File Loading 7
 3.4 Image files Loading Menu 7
 3.5 Device Setting Menu 7

4. Application Circuit 8

PRODUCT NAME

TP6820

TITLE

TP6820 Photo Display Function

APPLICATION NOTE

1. Function Introduction

1.1 LCD Display Function Introduction









- (1) Uses TFT-LCD Display with 240-RGB * 320-DOT specification.
- (2) 16 photo slide show and multiple-picture preview.
- (3) Calendar, Date and Time Display.
- (4) Remaining Battery Level Display and Low Battery Life indicator.
- (5) 9 interface function items Display.



1.2 Hardware Function

- (1) 3 buttons control – Next, Mode and Previous.
- (2) Supports 128M Bytes NAND Flash memory.
- (3) Supports FM Radio.
- (4) Supports 1 Channel Audio output.

1.3 Software Function

- (1) Displays 16 miniaturized pictures  ,
Delete pictures  .
- (2) Display the pictures and setting the slideshow transition time interval  .
- (3) Power-save mode settings and backlight brightness adjustment.  .
- (4) Displays Calendar/Time  and set the alarms  .
- (5) FM Radio function settings  .
- (6) Puzzle Game Option  .



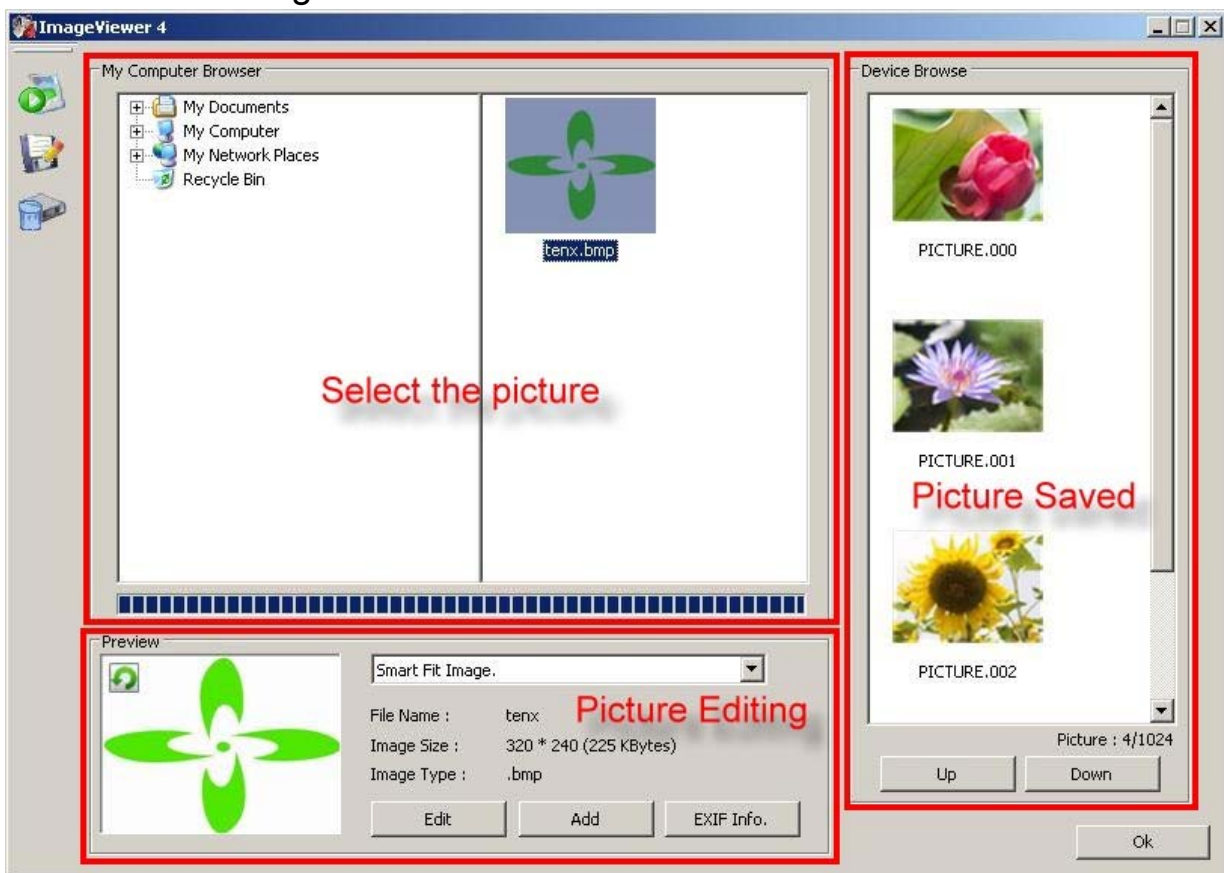
- (7) Turn Off Option

1.4 Software Support Function

- (1) Allows editing image files and changing the display order.
- (2) Allows editing background color and font color.
- (3) Display settings and Play mode settings.
- (4) Automatic Time/ Date update when connecting to USB port.
- (5) various Image file Formats Supported such as BMP, JPG ,GIF, etc.

2. Image Viewer Application

The AP application will launch automatically when connecting to USB port. No additional installation is needed. It is free of installation as shown in the figure below :



For more details on function and instruction, please refer to TP6820 User Manual



2.1 Repeat a slide show

The time interval for displaying each image in the slide show can be configured and set to repeat.



2.2 Device Settings

Allows setting foreground color, background color, and power save mode during standby time, the time to repeat playing, adjust the backlight brightness, set the alarm, multi-language input ..., etc.

(1) Foreground Color

The User can choose the text color, in addition to the basic color; the other color also can be selected.

(2) Background color

The User can choose the background color in addition to the basic color; the other color also can be selected.

(3) Power Save Mode and Shut Down

The user can set the time to enter a shutdown status from 0 to 30 minutes
(0 indicates no access to the shutdown mode)

(4) Shuffle/Repeat Play Settings

The user can select the time interval for displaying each image from 0 to 31 seconds in the slide show.
(Selecting 0 will turn the repeat mode off)

(5) Background Brightness Adjustment

Allows adjusting the level of brightness on a scale of 0 to 7.
(0 is the darkest, 7 is the brightest.)

(6) Alarm Clock Ringtone

Allows personal recording of a ringtone in the .WAV file format (limited to 8KHZ Sample rate) , having a duration for 8 seconds at most.

(7) Multi-Language

In addition to the default – English, it also allows import of other languages.



2.3 Format Device

Deletes all the saved image or audio files.

2.4 Browsing image files on the device

Allows moving the designated pictures up and down.

2.5 Preview

Preview the designated images or to add, edit the designated images.

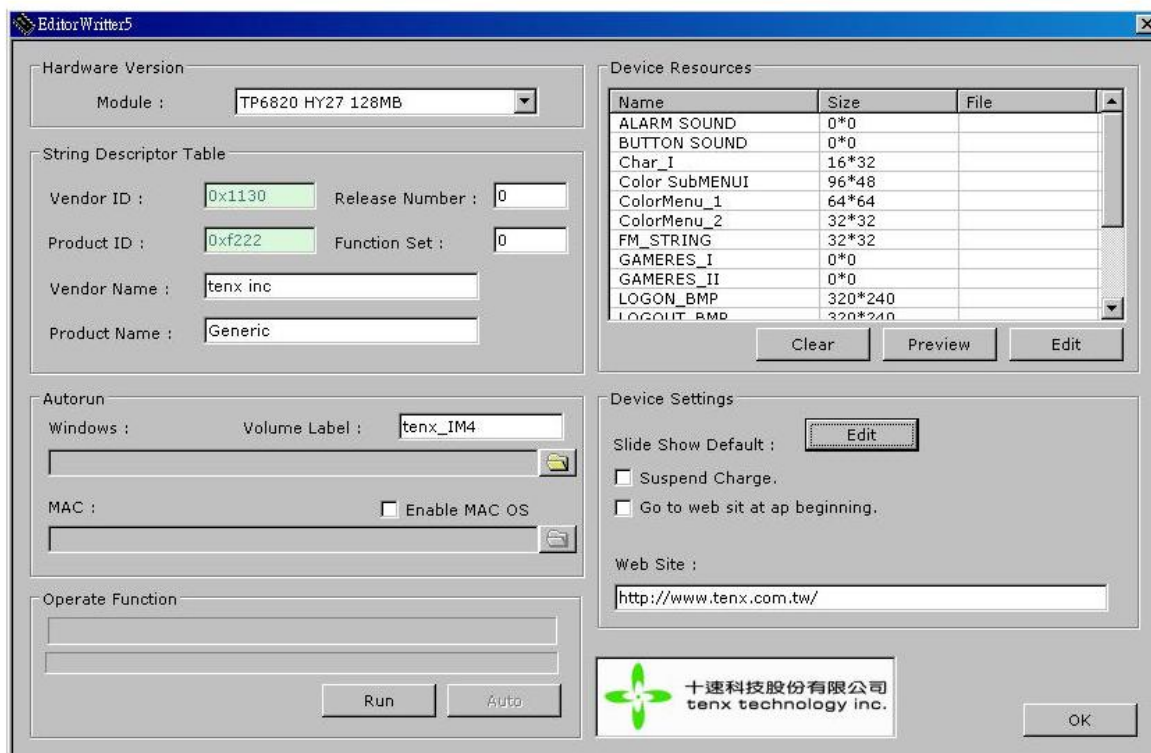
(1) Add

Add the selected images on the device.

(2) Edit

Allows rotating the selected image 90 degrees to left or to the right, Flip Horizontal, Flip Vertical, and Pictures zoom in and zoom out.

3. Editor Writer Application Introduction



For more details on function and instruction, please refer to TP6820 User Manual.

3.1 Hardware Version

Select the appropriate Flash Module

3.2 String Descriptor Table

Allows user to set PID/VID and product name..., etc.

3.3 Autorun

Allows loading Auto Run program. Image Viewer will be executed automatically when connects to USB port.

3.4 Device Resources

Load the displayed image file and ringtone, music ..., etc.

3.5 Device Settings

Allows the user to set the background brightness/color, standby time, the Slide Show time interval..., etc.



4. Application Circuit

