



PRODUCT NAME

TM58XX

TITLE

TM58XX 如何使用滾動碼

APPLICATION NOTE

1. 程式
2. 燒錄步驟
3. 應用線路圖

在燒錄時，有一些 IC 具有“唯一性”。例如：遙控器的發射與接收之間，要實現一對一的關係時，就需要用燒入滾動碼的方式來實現。

程式編寫如下：

該程式的功能為：將滾動碼讀出並在 PORTB 口顯示出來。

```

MOVLA    00H
IODIR    PORTA
MOVLA    00H
IODIR    PORTB

CLRM     PORTA
CLRM     PORTB
START:
LCALL    RET_VALUE1
MOVAM    PORTB
LCALL    DELAY5S
LCALL    RET_VALUE2
MOVAM    PORTB
LCALL    DELAY5S
LGOTO    START

        ORG    03F0H        ;該地址是可以選在任意兩個連續程式為空的 ROM 內

RET_VALUE1:
        RETLA    0FFH        ;此處的返回值是隨意的，IC 裏面燒錄的值會在燒錄由燒
                                ;錄軟體自動更改

RET_VALUE2:
        RETLA    0FFH        ;此處的返回值是隨意的，IC 裏面燒錄的值會在燒錄由
                                ;燒錄軟體自動更改

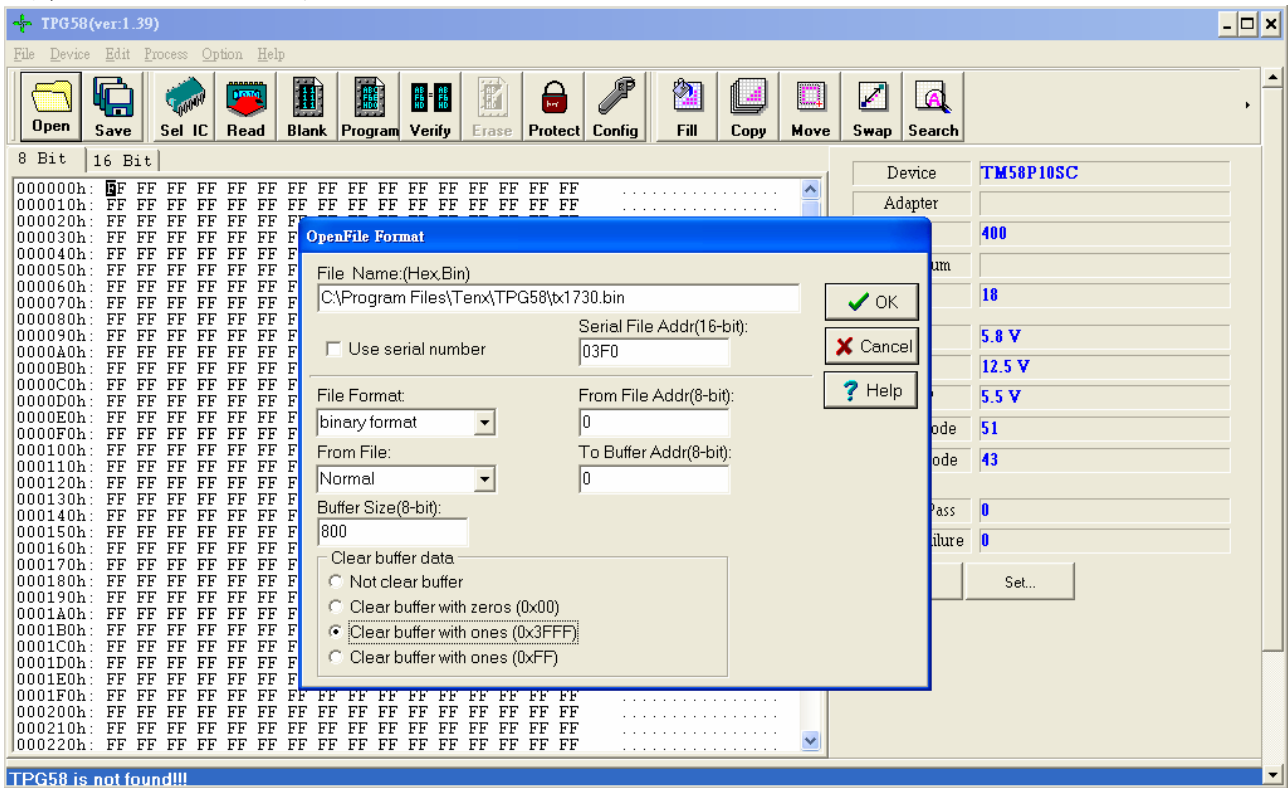
        END

```

燒錄步驟為：

第一步：Open file

文件在打開時會彈出如下畫面，選中 Use serial number 選項，修改 Serial File Addr 與程式中 RET_VALUE 的位址相同。



第二步：
設置 Serial，將 Serial number 修改為 0

The screenshot shows the TPG58 software interface. The main window displays a memory dump with addresses from 000000h to 000220h and data values mostly FF. A second window shows a more detailed memory dump with addresses from 000000h to 0001B0h and various data values. A 'RollingForm' dialog box is open, with 'Current (Dec)' set to 0. A red arrow points from the 'Current (Dec)' field in the dialog to the 'Serial Index' field in the device configuration panel on the right, which is currently set to 0.

Device Configuration Panel (Right):

- Device: TM58P10SC
- Adapter: [Empty]
- Size: 400
- Check Sum: [Empty]
- Pin: 18
- VCC: 5.8 V
- VPP: 12.5 V
- VCCP: 5.5 V
- Manuf. Code: 51
- Device Code: 43
- Current Pass: 0
- Current Failure: 0

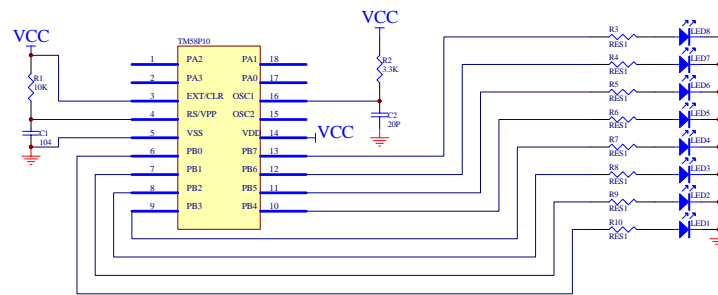
RollingForm Dialog Box:

- Current (Dec): 0
- Step (Dec): 0
- Bytes: 4 Bytes (selected)
- Buttons: OK, Cancel

此時，3F0H、3F1H單元的值為3C00 3C00，每燒錄一顆IC，3F0H單元的值會自動加1。當加到3CFF時，會向3F1H單元溢出。這樣滾動碼的範圍就為0000~FFFFH。

The screenshot shows the TPG58 programmer software interface. The main window displays a memory dump with columns for address, data, and bit patterns. The address range shown is from 000250h to 0003F8h. The data column shows hexadecimal values, with most being 03FF. At the bottom of the dump, the values 3C00 3C00 are visible at address 0003F0h. The right-hand side of the interface contains a configuration panel for the device TM58P10SC, listing parameters such as Adapter, Size (400), Check Sum (0000h), Pin (18), VCC (5.8 V), VPP (12.5 V), VCCP (5.5 V), Manuf. Code (51), and Device Code (43). There are also buttons for 'Reset' and 'Set...'.

應用線路圖



Title:		
Size: B	Number:	Revision:
Date:	Sheet of	
File:	Drawn by:	

